

Rosy Barb (*Pethia conchonius*) Ecological Risk Screening Summary

U.S. Fish and Wildlife Service, Web Version – 12/7/2017



Photo: Marrabbio2. Licensed under GNU Free Documentation License, Version 1.2. Available: https://commons.wikimedia.org/wiki/File:Puntius_conchonius.jpg. (April 5, 2016).

1 Native Range and Status in the United States

Native Range

From Dhanukar (2015):

“*Pethia conchonius* is found in Afghanistan, Pakistan (Indus river drainage), India (Ganga, Brahmaputra, Mahanadi, Godavari, Krishna and Cauvery river systems and other west-flowing rivers), Nepal, and Bangladesh (Talwar and Jhingran 1991).”

From Froese and Pauly (2016):

“Asia: Afghanistan, Pakistan, India, Nepal, and Bangladesh [Talwar and Jhingran 1991]. Reported from Myanmar [Oo 2002].”

Status in the United States

From Nico and Neilson (2016):

“A few specimens were taken from a Lake Worth Drainage District canal L-15, adjacent to a fish farm in Palm Beach County, Florida, in the late 1960s or early 1970s (Courtenay et al. 1974; Courtenay and Hensley 1979). No additional specimens have been taken there. Individuals were also collected from a tributary of Big Branch Bayou, St. Tammany Parish, Louisiana, in 2004 (K. Piller, pers. comm.). The rosy barb is also established in a variety of reservoirs, lakes, and streams in Puerto Rico (Lee et al. 1983; Erdsman 1984; Kwak et al 2007).”

“Failed in Florida and Louisiana; established in Puerto Rico.”

From FAO (2016):

“*Puntius conchoni* introduced to United States of America from India”

“Date of introduction: 1960”

“Status of the introduced species in the wild: Not established”

“*Puntius conchoni* introduced to Puerto Rico from United States of America”

“Date of introduction: before 1971”

“Status of the introduced species in the wild: Established”

Nico and Neilson (2016) stated that the introductions in the United States could be the result of escapes from farm ponds or aquarium releases which indicates that there is some level of trade of *Pethia conchoni* species in the U.S.

Means of Introductions in the United States

From Nico and Neilson (2016):

“Probable escape or release from fish farm, or aquarium release.”

From FAO (2016):

“Reasons of Introduction: 1) ornamental”

From CABI (2016):

“In the USA, the species was collected from a Lake Worth Drainage District canal adjacent to a fish farm in Palm Beach County, Florida, in the late 1960s or early 1970s (Courtenay et al., 1974), though further collections have not occurred (Nico, 2010).”

Remarks

Pethia conchoni is the valid name of this species (Eschmeyer et al. 2017). Not all databases have incorporated the genus change to *Pethia* from the previously valid *Puntius*; therefore

information searches were performed using both names in order to reasonably obtain all pertinent information for this species.

2 Biology and Ecology

Taxonomic Hierarchy and Taxonomic Standing

From Eschmeyer et al. (2017):

“*conchoni*us, *Cyprinus* Hamilton [F.] 1822:317, 389 [An account of the fishes found in the river Ganges; [...] Ponds of northeastern Bengal; Kosi and Ami rivers, India. No types known. •Valid as *Puntius conchoni*us (Hamilton 1822) -- (Shrestha 1978:36 [...], Aatur Rahman 1989:131 [...], Coad 1981:11 [...], Paxton et al. 1989:217 [...], Talwar & Jhingran 1991:266 [...], Singh & Yazdani 1993:198 [...], Sen 1995:514 [...], Kullander et al. 1999:108 [...], Rema Devi & Raghunathan 1999:153 [...], Sen 1999:192 [...], Rema Devi et al. 1999:156 [...], Menon 1999:90 [...], Fuller et al. 1999:142 [...], Menon et al. 2000:267 [...], Arunachalam et al. 2000:293 [...], Rafique 2000:324 [...], Mirza 2000:355 [...], Karmakar 2000:28 [...], Allen et al. 2002:361 [...], Raju Thomas et al. 2002:49 [...], Arunkumar & Tombe Singh 2003:481 [...], Mirza 2003:8 [...], Yadav 2003:12 [...], Aatur Rahman 2003:149 [...], Vishwanath & Laisram 2004:134 [...], Kullander & Fang 2005:297 [...], Jameela Beevi & Ramachandran 2005:85 [...], Shantakumar & Vishwanath 2006:2279 [...], Allen et al. 2006:347 [...], Kullander 2008:59 [...], Shetha 2008:78 [...], Kullander & Britz 2008:61 [...], Conway et al. 2011:1755 [...]). •Valid as *Pethia conchoni*us (Hamilton 1822) -- (Pethiyagoda et al. 2012:81 [...], Ahmed et al. 2013:286 [...], Ahmed et al. 2013:286 [...], Mayanglambam & Vishwanath 2013:88 [...], Kottelat 2013:140 [...], Lalramliana et al. 2014:372 [...], Katwate et al. 2014:244 [...], Katwate et al. 2014:213 [...], Atkore et al. 2015:295 [...], Katwate et al. 2016:2043 [...]). **Current status:** Valid as *Pethia conchoni*us (Hamilton 1822). Cyprinidae: Cyprininae.”

From ITIS (2016):

“Kingdom Animalia
Subkingdom Bilateria
Infrakingdom Deuterostomia
Phylum Chordata
Subphylum Vertebrata
Infraphylum Gnathostomata
Superclass Osteichthyes
Class Actinopterygii
Subclass Neopterygii
Infraclass Teleostei
Superorder Ostariophysii
Order Cypriniformes
Superfamily Cyprinoidea
Family Cyprinidae
Genus *Puntius* [ITIS has not yet incorporated the genus change to
Pethia]

Species *Puntius conchoni* (Hamilton, 1822)”

Froese and Pauly (2016) list the following names as synonyms to *Pethia conchoni*: *Barbus conchoni*, *B. conchonlus*, *B. pyrropterus*, *Cyprinus conchoni*, *Puntius conchoni*, *P. conchoni khagariensis*, *Systomus conchoni*, *S. pyrropterus*, and *S. pyrropterus*.

Size, Weight, and Age Range

From Dhanukar (2015):

“It attains a length of 14 cm and matures at 6 cm (Talwar and Jhingran 1991).”

From Corfield et al. (2008):

“Minimum population doubling time less than 15 months and can reach breeding maturation in less than 1 year (FishBase). Sterba (1966) states that aquarium-reared populations of the genus *Puntius* can begin spawning between 9 and 12 months. Considered to have a high level of resilience (FishBase).”

Environment

From Froese and Pauly (2016):

“Freshwater; benthopelagic; pH range: 6.0 - 8.0; dH range: 5 - 19.”

From CABI (2016):

“In the Damodar River, pH ranged from a low of 3.23 at Panchet in monsoon to a high of 7.95 in Tarakeshwar in pre-monsoon. Low pH values were also observed at Tarakeshwar (4.02 in monsoon) and Chandrapura (4.3 in pre-monsoon). Dissolved oxygen ranged from a low of 2.45 mg/l at Chandrapura in monsoon to a high of 9.63 mg/l at Panchet in post-monsoon. Free Carbon dioxide ranged from a low of 6.24 mg/l at Panchet in post-monsoon to a high of 47.64 mg/l at Panchet in pre-monsoon. Alkalinity ranged from a low of 7.15 mg/l at Chandrapura in monsoon to a high of 687 mg/l at Panchet in post-monsoon. Transparency ranged from 1.2 cm at Tarakeshwar in monsoon to 150.8 cm at Panchet in pre-monsoon. Water temperature ranged from a low of 21 °C at Tarakeshwar in monsoon to a high of 39.84 °C at Chandrapura in pre-monsoon (Sarkar and Banjeree 2010).”

“In south-western Australia, the water parameters where Beatty et al. (2006) collected *P. conchoni* at Jिंगarmup Brook were: temperature approximately 16 °C, conductivity approximately 1200 µS/cm (i.e. approximately 0.6 ppt), pH approximately 7.4 and dissolved oxygen approximately 8.8 ppm (very approximately 8.8 mg/l).”

“Raina and Petr (1999) collected *P. conchoni* in the floodplain lakes and wetlands of the Kashmir Valley in the Indian Himalayas. The physic-chemical parameters of the lakes were: surface water temperature 4 °C - 31.5 °C, Transparency 0.5 m – 4.0 m, pH 7.2 – 10.2, dissolved oxygen 0.25 mg/l – 12.2 mg/l and total alkalinity 50 mg/l – 192 mg/l.”

Climate/Range

From Froese and Pauly (2016):

“Subtropical; 18°C - 22°C [mean air temperature] [Riehl and Baensch 1991]; 40°N - 8°N”

Distribution Outside the United States

Native

From Dhanukar (2015):

“*Pethia conchonius* is found in Afghanistan, Pakistan (Indus river drainage), India (Ganga, Brahmaputra, Mahanadi, Godavari, Krishna and Cauvery river systems and other west-flowing rivers), Nepal, and Bangladesh (Talwar and Jhingran 1991).”

From Froese and Pauly (2016):

“Asia: Afghanistan, Pakistan, India, Nepal, and Bangladesh [Talwar and Jhingran 1991].
Reported from Myanmar [Oo 2002].”

Introduced

From Nico and Neilson (2016):

“This species is also established in Queensland and Western Australia (Corfield et al. 2008).”
From Froese and Pauly (2016):

“Introduced worldwide and now very popular with aquarists.”

From FAO (2016):

“*Puntius conchonius* introduced to Mexico from unknown”

“Date of introduction: 1967”

“Status of the introduced species in the wild: probably not established”

“*Puntius conchonius* introduced to Colombia from unknown”

“Date of introduction: unknown”

“Status of the introduced species in the wild: Established”

“*Puntius conchonius* introduced to Australia from unknown”

“Date of introduction: 1970”

“Status of the introduced species in the wild: Established”

“*Puntius conchonius* introduced to Canada from [unknown]”

“Date of introduction: [unknown]”

“Status of the introduced species in the wild: Unknown”

“*Puntius conchonius* introduced to Philippines from [unknown]”

“Date of introduction: [unknown]”

“Status of the introduced species in the wild: Unknown”

“*Puntius conchoni* introduced to Singapore from [unknown]”

“Date of introduction: [unknown]”

“Status of the introduced species in the wild: Established”

From Magalhães and Jacobi (2013):

“Among the 65 non-native aquarium fish currently found in Brazilian inland waters are seven cyprinids, the goldfish *C. auratus*, koi carp *Cyprinus rubrofuscus* Lacepède 1803, zebrafish *Danio rerio* (Hamilton 1822), Malabar danio *Devario malabaricus* (Jerdon 1849), Arulius barb *Dawkinsia tambraparniei* (Silas 1954), rosy barb *Pethia conchoni* (Hamilton 1822),”

From Espinosa-Pérez and Ramírez (2015):

“Two of these species: *Pethia conchoni* (Hamilton, 1822) and *Puntius tittैया* (Deraniyagala, 1929) were introduced for ornamental purposes and their status is unknown, although Contreras-B and Escalante-C (1984) mentioned them as probably established in Nuevo Leon (northern Mexico), but no recent record has confirmed this information. However, a new record of *P. conchoni* was recently found in a dam in Guerrero (southern Mexico) and the specimen was deposited with the catalog number in CNPE-IBUNAM 20010.”

Means of Introduction Outside the United States

From FAO (2016):

“Reasons of Introduction: 1) ornamental”

From Magalhães and Jacobi (2013):

“The female-biased sex ratio of *P. conchoni* is explained by traditional practices: fish farmers dump these females into the creeks because they are less commercially attractive than the brighter pinkish males (Magalhães et al. 2002; Magalhães and Jacobi 2008).”

From Beatty et al. (2006):

“The wide size range of this species (20-58 mm TL) (Figure 6 [in original source]) suggests that it has formed a self-maintaining population and was probably established after the deliberate release of aquarium specimens (see Fish fauna general discussion).”

From CABI (2016):

“There are two main factors likely to influence the risk of introduction of *P. conchoni* to natural environments; the popularity of the species as an ornamental fish and the number of naturalized introduced populations.”

“*P. conchonius* is a popular ornamental species and it therefore follows that the potential for the release of fish is correlated with the popularity of that species and its abundance among fish hobbyists. For example, in Australia, Corfield et al. (2007) listed the relative importance of *P. conchonius* as a commercial aquarium fish species in Australia as “high” with the volume of fish sold as “medium” (which equates to between 10,000 to 100,000 fish sold per year).”

“There is the potential for the natural dispersal of introduced populations of *P. conchonius* and this is more likely to occur in areas that contain multiple populations and/or larger and widely distributed populations. For example, in Western Australia there is the very high probability of the species spreading within the interconnected streams/rivers and drainage systems of the Canning and Serpentine rivers.”

“The status of *P. conchonius* as an introduced species in Western Australia provides an interesting example of the correlation between geographic areas where there is a higher probability of the translocation and release of fishes (i.e. large population centres), and the actual established populations that have been recorded. In south-western Australia, two of the four recorded *P. conchonius* populations (including the oldest) are in sparsely-populated rural areas where it is likely that few people keep ornamental fishes and ornamental fishes are not locally available. Thus, this example demonstrates that various factors influence the establishment and success of introduced fish populations, not only anthropogenic factors (i.e. proximity to large population centres).”

Short Description

From Dhanukar (2015):

“It is most impressively coloured during the mating period, when the normally silvery male takes on a rich claret flush and the slightly larger female becomes more luminous.”

From CABI (2016):

“*P. conchonius* has a short to moderately elongated body that is deep and compressed while the abdomen is rounded and the head is short (Saroniya et al., 2013). It is reported to grow to a maximum size of 14 cm total length (TL) (Talwar and Jhingran, 1991).”

“The sizes of individuals vary within *P. conchonius* populations. Individuals from central India (i.e. within its native range) ranged from a minimum of 5.6 cm to a maximum of 10.0 cm TL (mean and standard deviation 6.95 + 0.89 cm) (Saroniya et al., 2013). *P. conchonius* collected from Lake Dal in Kashmir, India, ranged in length from 38 mm to 84 mm with mature fish 45 mm or larger (Shafi et al., 2013). *P. conchonius* collected from an introduced population in south-western Australia individuals ranged from 20-58 mm TL (Beatty et al., 2006).”

“Morphological/meristic characteristics of *P. conchonius* are as follows (Talwar and Jhingran, 1991; Saroniya et al., 2013): 9 dorsal fin rays; 11-12 pectoral fin rays; 9 ventral fin rays; 7-8 anal fin rays; 19 caudal fin rays; 24 lateral line scales; 8-11 pre-dorsal scales; 10-12 pre-ventral scales; 15-19 pre-anal scales; 0 barbels.”

“The colouration of *P. conchonius* is variable within and between native and introduced populations. Introduced populations of *P. conchonius* lack the reddish colouration of ornamental fish and are drab silver/cream though males may develop reddish colouration during the breeding season. For example, a wild Indian population was described by (Saroniya et al. 2013) as: “... coppery reddish in lower half and blackish in upper half of the body and the upper part of dorsal fin was black during breeding season while bright silvery colour in other period”.”

“Introduced populations in Queensland, Australia, are described as: “pinkish-red with silver flecks along the sides; dorsal and anal fins with black tips; during the spawning season males become a deep reddish colour and females become more luminous” (Department of Agriculture, Fisheries and Forestry, 2013).”

“During the breeding season, male *P. conchonius* may change from a drab silvery/grey background colour to red (Froese and Pauly 2013).”

“Male fish of ornamental varieties developed by selective breeding, such as the ‘glowlight chilli’ maintain an intense red colouration permanently.”

“*P. conchonius* (and other members of the *Pethia* and *Puntius* genera) have black markings. *P. conchonius* typically has a black spot at the rear of the body near the start of the caudal peduncle. However, members of these genera have body markings that may vary in size and shape depending upon season, state of maturity and physiological state (Shantakumar and Vishwanath 2006).”

“Images of *P. conchonius* from native Asian populations, introduced populations and ornamental varieties (i.e. long-finned and glowlight chilli) may be viewed at Beatty et al. (2006); Froese and Pauly (2013); Saroniya et al. (2013); Western Australian Department of Fisheries (2013).”

Biology

From Dhanukar (2015):

“It is one of the hardiest of the barbs; a hardy and very popular Asian minnow.”

“Generally inhabits lakes and streams.”

From Nico and Neilson (2016):

“Rosy barbs are omnivorous, consuming a wide and varied diet including eggs and fry of conspecifics and other species (Sterba 1966; Malhotra and Gupta 1990).”

From Froese and Pauly (2016):

“Feed on worms, crustaceans, insects and plant matter [Mills and Vevers 1989; Allen et al. 2002]. Prolific spawners that tolerate low water temperatures [Allen et al. 2002].”

“Adults inhabit lakes and fast flowing hill streams [Menon 1999; Talwar and Jhingran 1991].”

From Corfield et al. (2008):

“All members of the genus *Puntius* are oviparous. Young hatch 24-36 hours after eggs are laid and avoid predation by staying in close proximity to the substrate and vegetation for 1-2 days. Parents are notorious spawn-robbers and can devour their young (Sterba 1966). For breeding in aquaria, Sterba (1966) recommends a soft and not too pale substrate with a loose and not too dense screen of floating plants. While this recommendation was not specific to *P. conchoni*, or wild populations of this species, it may be that *P. conchoni* requires these habitat conditions in the field for sustaining its populations. Sterba (1966) states that all fine leafed plants are suitable for egg deposition. However, breeding of members of the genus *Puntius* is said to be a relatively simple process (Sterba 1966), which might indicate plasticity in their spawning requirements. For some species of *Puntius*, spawning may be triggered by influxes of fresh water in combination with light incidence during mornings (Sterba 1966).”

From CABI (2016):

“*P. conchoni* is oviparous and like most small barbs is an egg-scattering free spawner that exhibits no parental care.”

“The fecundity of *P. conchoni* was researched by Bahuguna et al. (2007) in the Mandal River in the Himalayas. 73 mature females (53-79 mm) exhibited an absolute fecundity ranging from 523.0-1366. A monthly analysis of the sex ratio of fish varied from 1:1 (April) to 1:1.8 (July) with an annual average 1:1.17.”

“Mature female *P. conchoni* collected from Dal Lake in Kashmir, India, exhibited an absolute fecundity of 154.07-7202.91, and a relative fecundity of 43.0-1268.0 (Shafi et al., 2013). These authors concluded that *P. conchoni* is a “partial” or heterochronal spawner; i.e. spawning takes place over a long period of time and occurs concurrently with the development of eggs at different stages within the ovary. The species is a batch spawner with spawning extending from mid-May with peaks in June and July in Dal Lake.”

“The effects of salinity on embryogenesis and hatching of *P. conchoni* was researched by Bhattacharya et al. (2006). They concluded that embryos at different stages of development were exposed to salinities of 4, 6, 8 and 10 ppt. The results suggested that early development stages (2-4 cell and blastula embryos) were unable to tolerate salinities above 8-10 ppt. Thus, *P. conchoni* is unlikely to be able to reproduce in brackish water systems and certainly not in seawater.”

“*P. conchoni* breeds throughout the year under laboratory conditions and may spawn at intervals as short as 8 days (Varadi and Horvath 1993). Eggs hatch within 24-36 hours (Sterba 1966), with Adam et al. (1995) reporting a period of approximately 24 hours from fertilization to hatching at 28 °C.”

“Sex differentiation occurs post-hatching between 18-21 days in females and 36-40 in males (Çek 2006). Çek et al. (2001) observed the sex ratio in 300 laboratory fish to be 210:80 in favour of female fish. Maturation of female *P. conchonius* may occur in as short a period of time as 112 days (Çek et al., 2001).”

“Fry avoid predation by staying in close proximity to the substrate and/or vegetation for a number of days (Sterba 1966).”

“Like most successful small, introduced freshwater fishes, *P. conchonius* is an omnivore with undemanding dietary requirements. Its diet is reported to consist of worms, insects, crustaceans and plant matter. The species will also reportedly consume the eggs and fry of conspecifics and other species (Sterba, 1966; Mills and Vevers, 1989).”

“Malhotra and Gupta (1990) researched the seasonal diet of *P. conchonius* from the freshwater Lake Mansar. They found that the species is an omnivore and consumed primarily plant/algal material though also aquatic invertebrates and detritus. The “plant material” included plankton (zoo and phyto), desmids, diatoms and multicellular algae and macrophytes. The aquatic invertebrates included cladocera and copepoda. Food intake increased from December to April with the authors speculating that this was driven by the growth of the gonads prior to spawning in May.”

“*P. conchonius* is reported to be cannibalistic (Sterba 1966).”

Human Uses

From Dhanukar (2015):

“One of the most undemanding and beautiful tropical fishes and a great favourite. It is perhaps the best known and most popular of the genus, as far as aquarists are concerned. It is one of the hardiest of the barbs. The fish is docile and can generally be kept together with other small fishes in aquariums (Talwar and Jhingran 1991).”

From CABI (2016):

“*P. conchonius* has been used as a model for: clinical toxicology/psychology trials (Gill and Pant, 1983; Kumar and Pant, 1988; Kuhlbe et al., 1995), fish physiology (Khanna and Singh, 1983), genetics (Varadi et al., 1995), developmental biology (Amanze, 1994), fish behaviour (Pyanov, 1993) and histochemistry (Hill and Womersley, 1993).”

Diseases

Infection with *Gyrodactylus salaris* is on the 2016 list of OIE reportable diseases. Corfield et al. (2008) does not specify which species of *Gyrodactylus* can be carried by *Pethia conchonius*.

Infection with *Aphanomyces invadans* is on the 2016 list of OIE reportable diseases.

From Froese and Pauly (2016):

“White spot Disease, Parasitic infestations (protozoa, worms, etc.)
Bacterial Infections (general), Bacterial diseases
Fatty degeneration, Nutritional deficiencies
Edwardsiellosis, Bacterial diseases
Enteric Septicaemia of Catfish, Parasitic infestations (protozoa, worms, etc.)”

From Corfield et al. (2008):

“Bacteria
Aeromonas hydrophila India (Devashish et al. 1999)
Edwardsiella ictaluri Australia – quarantine (Humphrey et al. 1986)
Streptococcus sp. Humphrey (1995b)
Fungi
Aphanomyces invadans Thailand (Tonguthai 1985, Roberts et al. 1986)
Protozoa
Piscinoodinium pillulare Malaysia (Shaharom-Harrison et al. 1990)
Metazoa
Gyrodactylus sp. Philippines (Lumanlan et al. 1992)
Procamallanus spiculogubernaculus (Hine and Diggles 2005)
Pseudocapillaria margolisi India (De and Maity 1996)”

Threat to Humans

From Froese and Pauly (2016):

“Harmless”

3 Impacts of Introductions

From Nico and Neilson (2016):

“Unknown.”

From Magalhães and Jacobi (2013):

“Competition for food is possible between the non-native cyprinids *C. auratus*, *C. rubrofasciatus*, *D. tambraparniei*, *P. conchoniensis* and *P. nigrofasciata*, and the native cichlids *G. obscurus* and *A. muriae*, since they are all omnivorous and usually live in the deep layer of streams (Froese and Pauly 2007; Menezes et al. 2007).”

From Corfield et al. (2008):

“Impacts in Australia: Unknown. None reported to date. Currently only reported from streams in and around Brisbane.”

“There are no reports of impacts on native fish in the wild, but this reflects a lack of study as against a lack of impacts.”

From CABI (2016):

“No definitive data is available on the environmental impact of *P. conchoni*, though generalisations can be made regarding the diet, reproduction and ecology of the species.”

“*P. conchoni* is omnivorous and may consume worms, insects, crustaceans and plant matter (Sterba, 1966; Mills and Vevers, 1989; Malhotra and Gupta, 1990). The species is therefore likely to be important in the structuring of food webs (Malhotra and Gupta, 1990).”

“*P. conchoni* may directly predate upon the eggs and fry of conspecifics and other species (Sterba, 1966; Malhotra and Gupta, 1990).”

4 Global Distribution

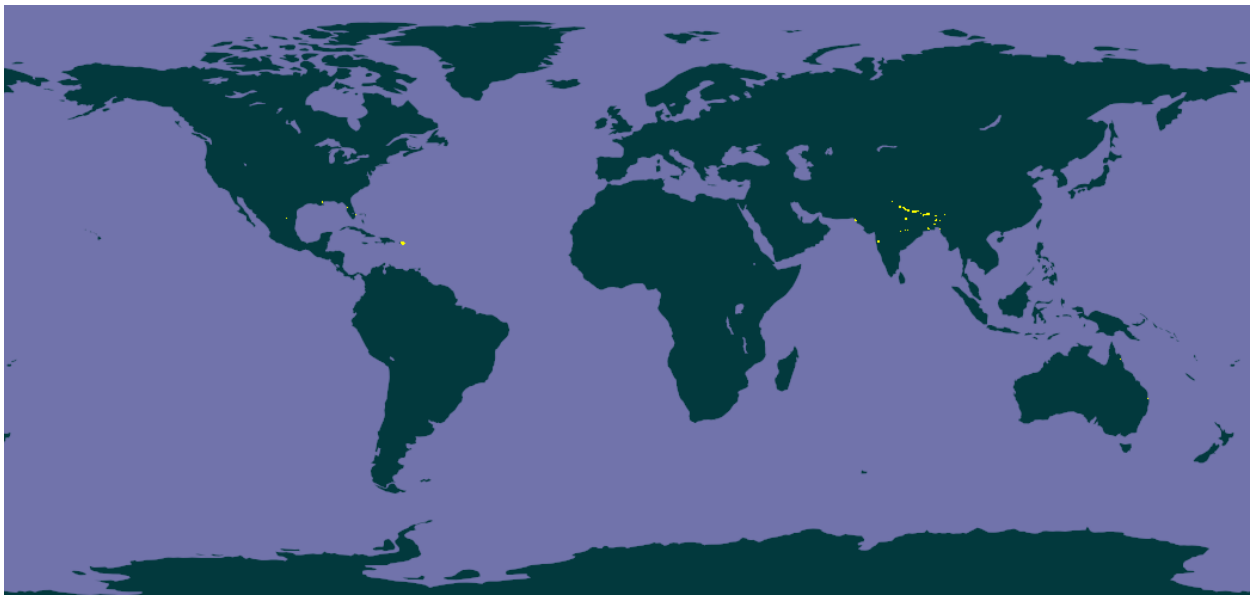


Figure 1. Known global distribution of *Pethia conchoni*. Map from GBIF Secretariat (2016).

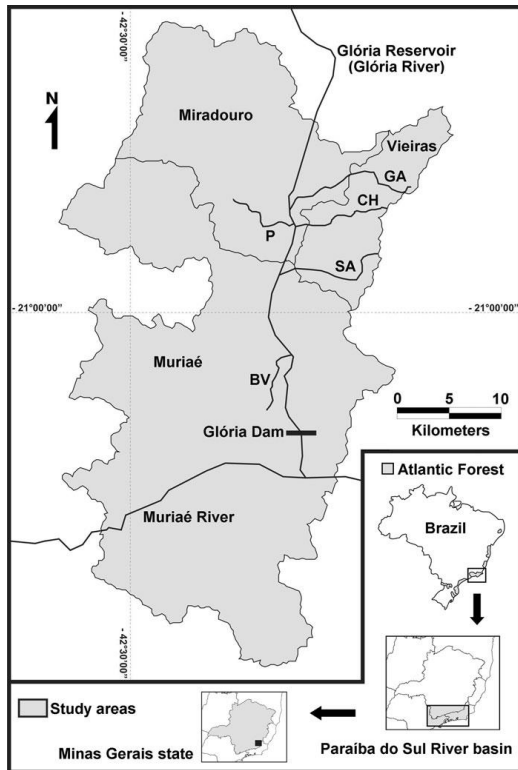


Figure 2. Study area of Magalhães and Jacobi (2013). Reproducing populations of *Pethia conchoni* were found within the study area.

Columbia is listed as having an introduced, established population of *Pethia conchoni* but no specific location information is available for that population(s). It was not used as a source point for the climate match.

Singapore also is listed as having an introduced, established population of *Pethia conchoni* with no specific location information. However, Singapore covers such a small geographic area that it was able to be used as a source point in the climate match.

5 Distribution Within the United States



Figure 3. Known distribution of *Pethia conchonius* in the United States. Map from Nico and Neilson (2016).

Nico and Neilson (2016) list the observations in Florida and Louisiana as the result of failed introductions and not established populations. Those points were not used as source points in the climate match.

6 Climate Matching

Summary of Climate Matching Analysis

The climate match for *Pethia conchoni* was high in southern Texas, along the Mexican border with Arizona and Nevada and in Florida. The climate had a medium match for much of the southern contiguous United States; elsewhere it was a low match. The Climate 6 score (Sanders et al. 2014; 16 climate variables; Euclidean distance) for the contiguous U.S. was 0.062, medium. Arizona, Florida, New Mexico, and Texas had individually high climate matches.

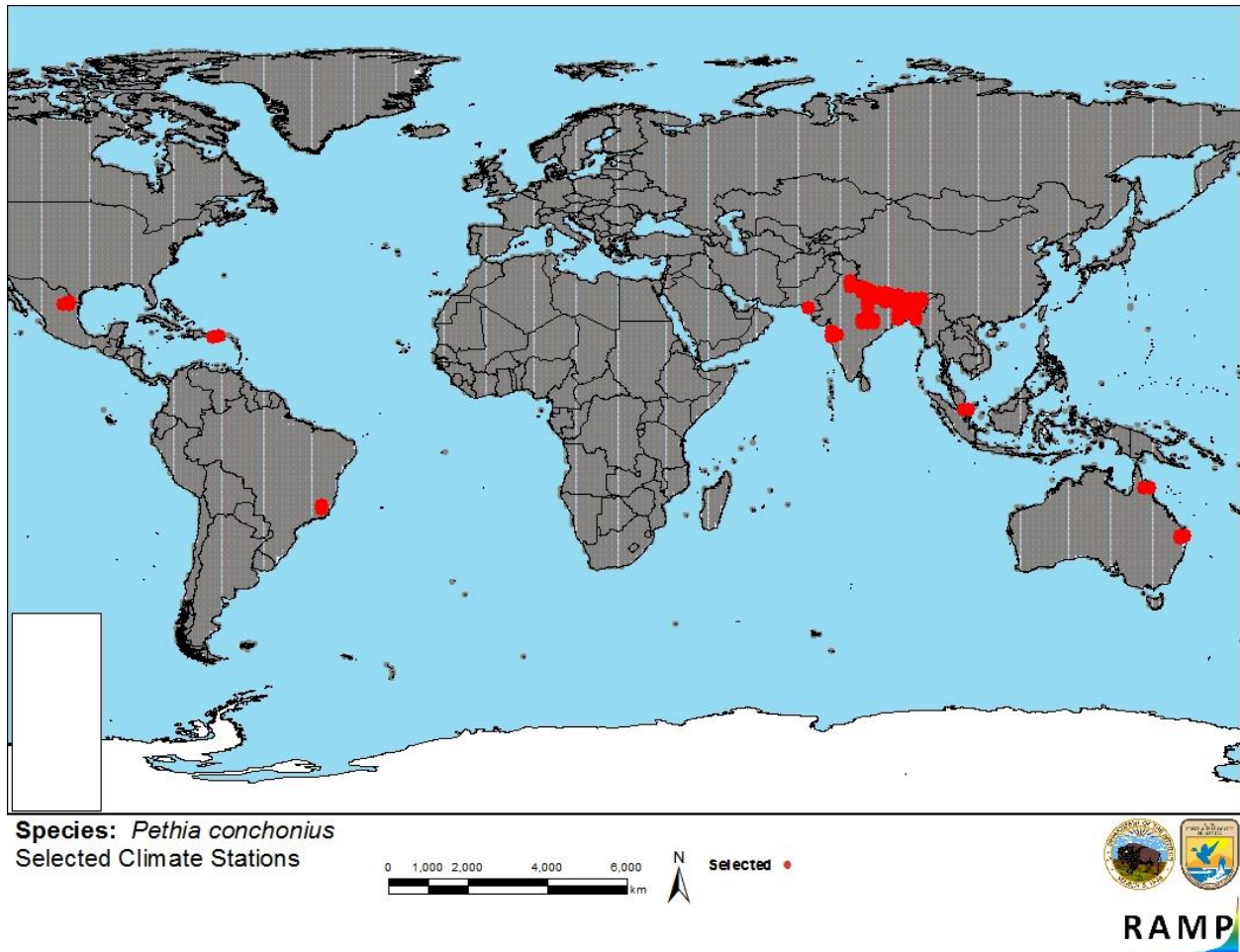


Figure 4. RAMP (Sanders et al. 2014) source map showing weather stations selected as source locations (red) and non-source locations (grey) for *Pethia conchoni* climate matching. Source locations from Magalhães and Jacobi (2013), FAO (2016), GBIF Secretariat (2016), and Nico and Neilson (2016).

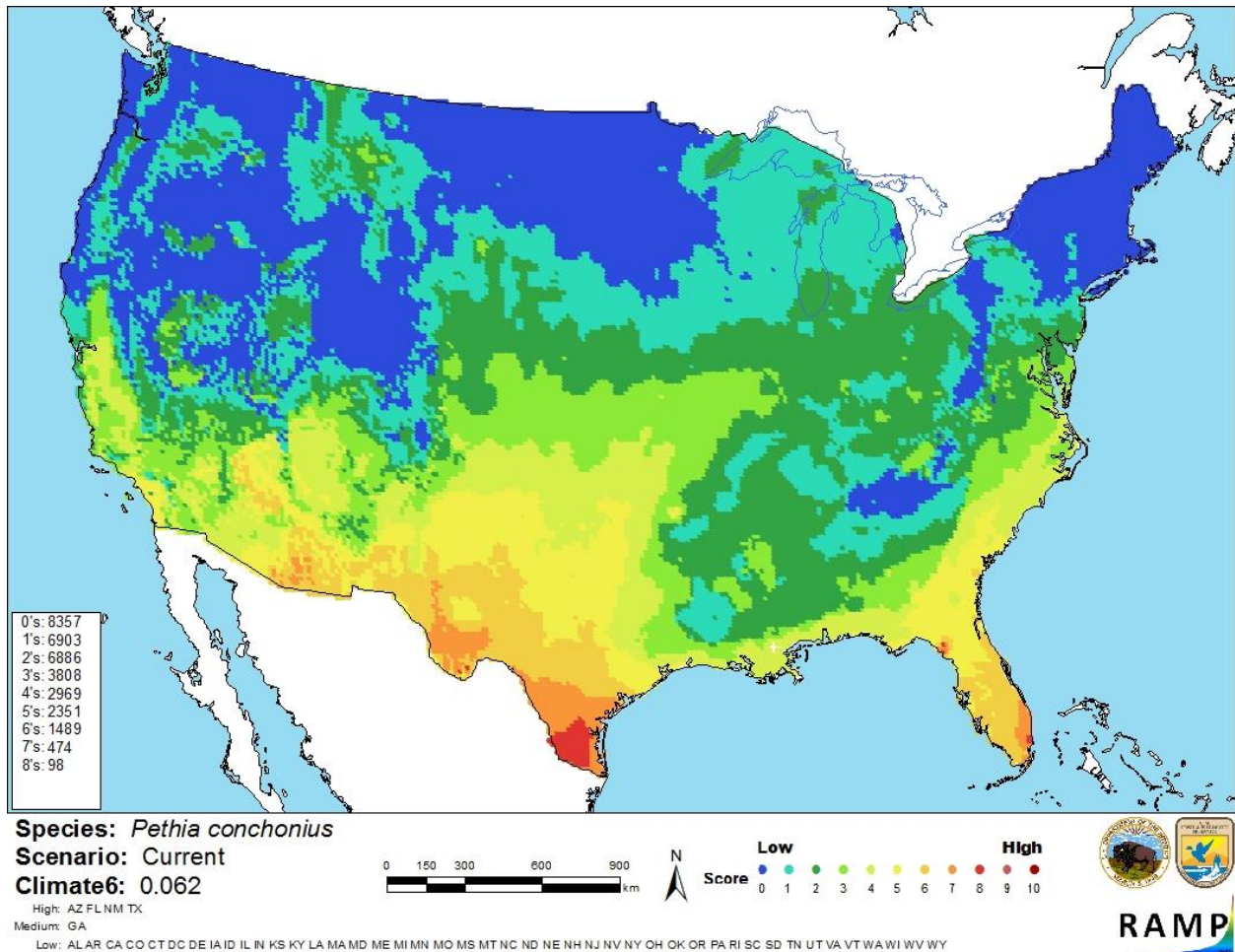


Figure 5. Map of RAMP (Sanders et al. 2014) climate matches for *Pethia conchoniuss* in the contiguous United States based on source locations reported by Magalhães and Jacobi (2013), FAO (2016), GBIF Secretariat (2016), and Nico and Neilson (2016). 0 = Lowest match, 10 = Highest match.

The High, Medium, and Low Climate match Categories are based on the following table:

Climate 6: Proportion of (Sum of Climate Scores 6-10) / (Sum of total Climate Scores)	Climate Match Category
$0.000 < X < 0.005$	Low
$0.005 < X < 0.103$	Medium
≥ 0.103	High

7 Certainty of Assessment

The certainty of assessment for *Pethia conchoniuss* is medium. There was adequate ecological and biological information available. Records of introductions and established non-native populations were found. There was little information on the impacts of those populations and the

information that was available was on potential and not realized impacts. There was some information missing for the climate match.

8 Risk Assessment

Summary of Risk to the Contiguous United States

The history of invasiveness for *Pethia conchonius* is not documented. There are many records of introductions and some resulted in established populations. However, there are no recorded demonstrated impacts from those populations. One source attributed that to a lack of research and not a lack on impacts. The climate match is medium. There could potentially be a suitable climate for *Pethia conchonius* in many areas of the southern United States. The overall risk assessment category is uncertain.

Assessment Elements

- **History of Invasiveness (Sec. 3): None Documented**
- **Climate Match (Sec. 6): Medium**
- **Certainty of Assessment (Sec. 7): Medium**
- **Remarks/Important additional information** No additional remarks.
- **Overall Risk Assessment Category: Uncertain**

9 References

Note: The following references were accessed for this ERSS. References cited within quoted text but not accessed are included below in Section 10.

Beatty, S., D. Morgan, C. Jury, and J. Mitchell. 2006. Fish and freshwater crayfish in streams in the Cape Naturaliste region and Wilyabrup Brook. Report to the Cape to Cape Catchments Group and GeoCatch, Australia.

CABI. 2016. *Pethia conchonius* [original text by M. Maddern]. In *Invasive Species Compendium*. CAB International, Wallingford, U.K. Available: <http://www.cabi.org/isc/datasheet/121017>. (July 2017).

Corfield, J., B. Diggles, C. Jubb, R. M. McDowall, A. Moore, A. Richards, and D. K. Rowe. 2008. Review of impacts of introduced ornamental fish species that have established wild populations in Australia. Prepared for the Australian Government Department of the Environment, Water, Heritage and the Arts.

Dhanukar, N. 2015. *Pethia conchonius*. The IUCN Red List of Threatened Species 2015: e.T166646A70081880. Available: <http://www.iucnredlist.org/details/full/166646/0>. (April 2016).

Eschmeyer, W. N., R. Fricke, and R. van der Laan, editors. 2017. *Catalog of fishes: genera, species, references*. Available:

- <http://researcharchive.calacademy.org/research/ichthyology/catalog/fishcatmain.asp>. (July 2017).
- Espinosa-Pérez, H., and M. Ramírez. 2015. Exotic and invasive fishes in Mexico. *Check List* 11(3):1627.
- FAO (Fisheries and Agriculture Organization of the United Nations). 2016. Database on introductions of aquatic species. FAO, Rome. Available: <http://www.fao.org/fishery/introsp/2266/en>. (April 2016).
- Froese, R., and D. Pauly, editors. 2016. *Pethia conchonius* (Hamilton, 1822). FishBase. Available: <http://www.fishbase.org/summary/Pethia-conchonius.html>. (April 2016).
- GBIF Secretariat. 2016. GBIF backbone taxonomy: *Pethia conchonius* (Hamilton, 1822). Global Biodiversity Information Facility, Copenhagen. Available: <https://demo.gbif.org/species/7572096>. (July 2017).
- ITIS (Integrated Taxonomic Information System). 2016. *Puntius conchonius* (Hamilton, 1822). Integrated Taxonomic Information System, Reston, Virginia. Available: http://www.itis.gov/servlet/SingleRpt/SingleRpt?search_topic=TSN&search_value=163710. (April 2016).
- Magalhães, A. L. B., and C. M. Jacobi. 2013. Asian aquarium fishes in a neotropical biodiversity hotspot: impeding establishment, spread and impacts. *Biological Invasions* 15:2157–2163.
- Nico, L., and M. Neilson. 2016. *Pethia conchonius*. U.S. Geological Survey, Nonindigenous Aquatic Species Database, Gainesville, Florida. Available: <http://nas.er.usgs.gov/queries/FactSheet.aspx?SpeciesID=630>. (April 2016).
- Sanders, S., C. Castiglione, and M. Hoff. 2014. Risk assessment mapping program: RAMP. U.S. Fish and Wildlife Service.

10 References Quoted But Not Accessed

Note: The following references are cited within quoted text within this ERSS, but were not accessed for its preparation. They are included here to provide the reader with more information.

- Abu Ahmed, A. T., Md. M. Rahman, and S. Mandal. 2013. Biodiversity of hillstream fishes in Bangladesh. *Zootaxa* 3700(2):283–292.
- Adam, M. M., K. J. Rana, and B. J. McAndrew. 1995. Effect of cryoprotectants on activity of selected enzymes in fish embryos. *Cryobiology* 32:92–104.

- Allen, G. R., N. J. Cross, and D. F. Hoese. 2006. Families and subfamilies. Pages 217–218, 345–347, 400–401, 629–632, 696–698, 1081–1112, 1141–1143, 1331–1343 in *Zoological catalogue of Australia*, volume 35. Fishes.
- Allen, G. R., S. H. Midgley, and M. Allen. 2002. *Field guide to the freshwater fishes of Australia*. Western Australian Museum, Perth.
- Amanze, D. 1994. Strategies for sperm-egg contact during external fertilisation in teleosts. Pages 176–181. *High performance fish: Proceedings of an International Fish Physiology Symposium*. University of Columbia, Canada Fish Physiology Association, Vancouver, British Columbia, Canada.
- Arunachalam, M., A. Sankaranarayanan, J. A. Johnson, A. Manimekalan, and R. Soranam. 2000. New records of fishes from the Western Ghats of Maharashtra. *Journal of the Bombay Natural History Society* 97(2):292–295.
- Arunkumar, L., and H. Tombi Singh. 2003. Two new species of puntiid fish from the Yu River system of Manipur. *Journal of the Bombay Natural History Society* 99(3)[2002]:481–487.
- Ataur Rahman, A. K. 1989. *Freshwater fishes of Bangladesh*. The Zoological Society of Bangladesh.
- Ataur Rahman, A. K. 2003. *Freshwater fishes of Bangladesh*, 2nd edition. Zoological Society of Bangladesh, Dhaka.
- Atkore, V. M., J. D. M. Knight, K. Rema Devi, and J. Krishnaswamy. 2015. A new species of *Pethia* from the Western Ghats, India (Teleostei: Cyprinidae). *Copeia* 103(2):290–296.
- Bahuguna, P. K., H. K. Joshi, and A. K. Dobriyal. 2007. Fecundity and sex ratio in *Puntius conchoni* (pisces Cyprinidae) from Garhwal Himalaya. *Environment Conservation Journal* 8(1–2):37–43.
- Beatty, S., D. Morgan, C. Jury, and J. Mitchell. 2006. *Fish and freshwater crayfish in streams in the Cape Naturaliste Region and Wilyabrup Brook*. Report to the Cape to Cape Catchments Group and GeoCatch. Freshwater Fish Group and Fish Health Unit, Murdoch University.
- Bhattacharya, H., S. C. Zhang, Y. J. Wang, and Y. Y. Xu. 2006. Effects of salinity on embryogenesis and hatching of the rosy barb *Puntius conchoni* Hamilton 1822 (Cyprinidae). *Tropical Zoology* 19(1):111–118.
- Çek, S. 2006. Early gonadal development and sex differentiation in rosy barb (*Puntius conchoni*). *Animal Biology* 56(3):335–350.

- Çek, S., N. Bromage, C. Randall, and K. Rana. 2001. Oogenesis, hepatosomatic and gonadosomatic indexes, and sex ratio in rosy barb (*Puntius conchonius*). *Turkish Journal of Fisheries and Aquatic Sciences* 1(1):33–41.
- Coad, B. W. 1981. Fishes of Afghanistan, an annotated checklist. National Museum of Canada Publications in Zoology 14:1–26.
- Contreras-B, S., and M. A. Escalante-C. 1984. Distribution and known impacts of exotic fishes in Mexico. Pages 102–130 in W. R. Courtenay, and J. R. Stauffer, editors. *Distribution, biology and management of exotic fishes*. The John Hopkins University Press, Baltimore, Maryland.
- Conway, K. W., D. R. Edds, J. Shrestha, and R. L. Mayden. 2011. A new species of gravel-dwelling loach (Ostariophysi: Nemacheilidae) from the Nepalese Himalayan foothills. *Journal of Fish Biology* 79(7):1746–1759.
- Corfield, et al. 2007. [Source material did not give full citation for this reference.]
- Corfield, J., B. Diggles, C. Jubb, R. M. McDowall, A. Moore, A. Richards, and D. K. Rowe. 2008. Review of impacts of introduced ornamental fish species that have established wild populations in Australia. Prepared for the Australian Government Department of the Environment, Water, Heritage and the Arts.
- Courtenay, W. R., Jr., and D. A. Hensley. 1979. Survey of introduced non-native fishes. Phase I Report. *Introduced exotic fishes in North America: status 1979*. Report submitted to National Fishery Research Laboratory, U.S. Fish and Wildlife Service, Gainesville, Florida.
- Courtenay, W. R., Jr., H. F. Sahlman, W. W. Miley II, and D. J. Herrema. 1974. Exotic fishes in fresh and brackish waters of Florida. *Biological Conservation* 6(4):292–302.
- De, N. C., and R. N. Maity. 1996. *Pseudocapillaria (Discocapillaria) margolisi* n. subg. n. sp. (Nematoda: Trichuroidea) from freshwater fishes of West Bengal, India. *Systematic Parasitology* 34:49–52.
- Department of Agriculture, Fisheries and Forestry. 2013. [Source material did not give full citation for this reference.]
- Devashish, K., H. Rahaman, N. N. Barman, S. Kar, S. C. Dey, T. V. Ramachandra, and D. Kar. 1999. Bacterial pathogens associated with epizootic ulcerative syndrome in freshwater fishes of India. *Environment and Ecology* 17:1025–1027.
- Erdsman, D. S. 1984. Exotic fishes in Puerto Rico. Pages 162–176 in W. R. Courtenay, Jr., and J. R. Stauffer, Jr, editors. *Distribution, biology, and management of exotic fishes*. John Hopkins University Press, Baltimore, Maryland.

- FishBase. No Date. [Source did not give full citation for this reference.]
- Froese, R., and D. Pauly. 2007. FishBase. World Wide Web electronic publication. Available: <http://www.fishbase.org/>. (May 2007).
- Froese, R., and D. Pauly. 2013. FishBase. Available: <http://www.fishbase.org>.
- Fuller, P. L., L. G. Nico, and J. D. Williams. 1999. Nonindigenous fishes introduced into inland waters of the United States. American Fisheries Society, Special Publication 27, Bethesda, Maryland.
- Gill, T. S., and J. C. Pant. 1983. Cadmium toxicity: inducement of changes in blood and tissue metabolites in fish. *Toxicology Letters* 18(3):195–200.
- Hamilton, F. 1822. An account of the fishes found in the River Ganges and its branches. Archibald Constable and Company, Edinburg, Scotland.
- Hill, K. T., and C. Z. Womersley. 1993. Interactive effects of some environmental and physiological variables on fluorescent pigment accumulation in brain and heart tissues of an aquatic poikilotherm. *Environmental Biology of Fishes* 37:397–405.
- Hine, P. M., and B. K. Diggles. 2005. Import disease risk assessment: live ornamental finfish into New Zealand. Risk Assessment developed for MAF Biosecurity, Wellington, New Zealand.
- Humphrey, J. D. 1995b. Australian quarantine policies and practices for aquatic animals and their products. A review for the Scientific Working Party on Aquatic Animal Quarantine, Part 2: Appendices. Bureau of Resource Sciences, Canberra, Australia.
- Humphrey, J. D., C. Lancaster, N. Gudkovs, and W. McDonald. 1986. Exotic bacterial pathogens *Edwardsiella tarda* and *Edwardsiella ictaluri* from imported ornamental fish *Betta splendens* and *Puntius conchoni*, respectively: isolation and quarantine significance. *Australian Veterinary Journal* 63:369–370.
- Jameela Beevi, K. S., and A. Ramachandran. 2005. A new species of *Puntius* (Cyprinidae, Cyprininae) from Kerala, India. *Journal of the Bombay Natural History Society* 102(1):83–85.
- Karmakar, A. K. 2000. Fish communities and their distribution in Himalayan drainage system. *Records of the Zoological Survey of India* 98(4):25–37.
- Katwate, K., F. Baby, R. Raghavan, and N. Dahanukar. 2014. The identity of *Pethia punctata*, a senior synonym of *P. muvattupuzhaensis* (Teleostei: Cyprinidae). *Zootaxa* 3884(3):201–221.

- Katwate, U., S. Jadhav, P. Kumkar, R. Raghavan, and N. Dahanukar. 2016. *Pethia sanjaymoluri*, a new species of barb (Teleostei: Cyprinidae) from the northern Western Ghats, India. *Journal of Fish Biology* 88(5):2027–2050.
- Katwate, U., M. S. Paingankar, R. Raghavan, and N. Dahanukar. 2014. *Pethia longicauda*, a new species of barb (Teleostei: Cyprinidae) from the northern Western Ghats, India. *Zootaxa* 3846(2):235–248.
- Khanna, N., and T. Singh. 1983. In vivo effects of estradiol-17 beta in a freshwater fish, *Barbus conchoni*, Hamilton. *Experientia* 39:1160–1161.
- Kottelat, M. 2013. The fishes of the inland waters of Southeast Asia: a catalogue and core bibliography of the fishes known to occur in freshwaters, mangroves and estuaries. *Raffles Bulletin of Zoology Supplement* 27:1–663.
- Kuhlbe, et al. 1995. [Source material did not give full citation for this reference.]
- Kullander, S. O. 2008. Five new species of *Puntius* from Myanmar (Teleostei: Cyprinidae). *Ichthyological Exploration of Freshwaters* 19(1):59–84.
- Kullander, S. O., and R. Britz. 2008. *Puntius padamya*, a new species of cyprinid fish from Myanmar (Teleostei: Cyprinidae). *Electronic Journal of Ichthyology, Bulletin of the European Ichthyology Society* 2:56–66.
- Kullander, S. O., and F. Fang. 2005. Two new species of *Puntius* from northern Myanmar (Teleostei: Cyprinidae). *Copeia* 2005(2):290–302.
- Kullander, S. O., F. Fang, B. Dellings, and E. Åhländer. 1999. The fishes of the Kashmir Valley. Pages 99–16 in L. Nyman, editor. *River Jhelum, Kashmir Valley. Impacts on the aquatic environment*. Swedmar, Göteborg, Sweden.
- Kumar, S., and S. C. Pant. 1988. Comparative sublethal ovarian pathology of some pesticides [aldrin, methoxychlor and monocrotophos] in the teleost, *Puntius conchoni* Hamilton. *Bulletin of Environmental Contamination and Toxicology* 41(2):227–232.
- Kwak, T. J., P. B. Cooney, and C. H. Brown. 2007. Fishery population and habitat assessment in Puerto Rico stream: phase 1 final report. Federal Aid in Sport Fish Restoration Project F-50 Final Report. Marine Resources Division, Puerto Rico Department of Natural and Environmental Resources, San Juan.
- Lalramliana, [no initial], J. D. M. Knight, and Z. Laltlanhlu. 2014. *Pethia rutila* (Teleostei: Cyprinidae), a new species from Mizoram, northeast India. *Zootaxa* 3827(3):366–374.
- Lee, D. S., S. P. Platania, and G. H. Burgess. 1983. Atlas of North American freshwater fishes - 1983 supplement. North Carolina Biological Survey and the North Carolina State Museum of Natural History, Raleigh.

- Lumanlan, S. C., J. D. Albaladejo, and M. Bondad-Rantanso. 1992. Freshwater fishes imported into the Philippines: their parasite faunas and role in the international spread of parasitic diseases. *Diseases in Asian Aquaculture* 1:323–335.
- Magalhães, A. L. B., and C. M. Jacobi. 2008. Ornamental exotic fish introduced into Atlantic forest water bodies, Brazil. *Neotropical Biological Conservation* 3:73–77.
- Magalhães, A. L. B., I. B. Amaral, T. F. Ratton, and M. F. G. Brito. 2002. Ornamental exotic fishes in the Glória Reservoir and Boa Vista stream, Paraíba do Sul River basin, state of Minas Gerais, southeastern Brazil. *Comun Mus Ciênc Tecnol PUCRS Zool* 15:265–278.
- Malhotra, Y. R., and A. Gupta. 1990. Seasonal fluctuations in food and feeding of *Puntius conchoni* inhabiting Lake Mansar, Jammu. *Journal of Freshwater Biology* 2(2):147–151.
- Mayanglambam, D., and W. Vishwanath. 2013. A new species of the genus *Pethia* from Mizoram, northeastern India (Teleostei: Cyprinidae). *Zootaxa* 3736(1):82–88.
- Menezes, N. A., S. H. Weitzman, O. T. Oyakawa, F. C. T. Lima, R. M. C. Castro, and M. J. Weitzman. 2007. Freshwater fishes of Mata Atlântica: list of species and comments on conservation of Neotropical freshwater fishes. Universidade de São Paulo, São Paulo, Brazil.
- Menon, A. G. K. 1999. Check list - fresh water fishes of India. Records of the Zoological Survey of India, Miscellaneous Publications, Occasional Paper Number 175.
- Menon, A. G. K., K. Rema Devi, and W. Vishwanath. 2000. A new species of *Puntius* (Cyprinidae: Cyprininae) from Manipur, India. *Journal of the Bombay Natural History Society* 97(2):263–268.
- Mills, D., and G. Vevers. 1989. The Tetra encyclopedia of freshwater tropical aquarium fishes. Tetra Press, New Jersey.
- Mirza, M. R. 2000. A contribution to the fishes of the river Kurram with proposal of a new subfamily Aspidoparinae (Cyprinidae). *Science International (Lahore)* 12(4):355–357.
- Mirza, M. R. 2003. Checklist of freshwater fishes of Pakistan. *Supplemental Series* 3:1–30.
- Nico. 2010. [Source material did not give full citation for this reference.]
- Oo, W. 2002. Inland fisheries of the Union of Myanmar. In T. Petr, and D. B. Swar, editors. Cold water fisheries in the trans-Himalayan countries. FAO Fisheries Technical Paper 431.

- Paxton, J. R., D. F. Hoese, G. R. Allen, and J. E. Hanley. 1989. Zoological catalogue of Australia, volume 7. Pisces. Petromyzontidae to Carangidae. Australian Government Publishing Service, Canberra.
- Pethiyagoda, R., M. Meegaskumbura, and K. Maduwage. 2012. A synopsis of the South Asian fishes referred to *Puntius* (Pisces: Cyprinidae). *Ichthyological Exploration of Freshwaters* 23(1):69–95.
- Pyanov, A. I. 1993. Fish learning in response to trawl fishing. *Fish Behaviour in Relation to Fishing Operation*. ICES Marine Science Symposia 196.
- Rafique, M. 2000. Fish diversity and distribution in Indus River and its drainage system. *Pakistan Journal of Zoology* 32(4):321–332.
- Raina, H. S., and T. Petr. 1999. Coldwater fish and fisheries in the Indian Himalayas: lakes and reservoirs. *Fish and Fisheries at Higher Altitudes: Asia*. FAO Fisheries Technical Paper 385.
- Raju Thomas, K., M. J. George, and C. R. Biju. 2002. Freshwater fishes of southern Kerala with notes on the distribution of endemic and endangered species. *Journal of the Bombay Natural History Society* 99(1):47–53.
- Rema Devi, K., T. J. Indra, M. B. Raghunathan, and M. Mary Bai. 1999. On a collection of fish fauna from Chennai, Chengleput and Thiruvallur districts of Tamil Nadu. *Records of the Zoological Survey of India* 97(4):151–166.
- Rema Devi, K., and M. B. Raghunathan. 1999. The ichthyofauna of Dharmapuri district, Tamil Nadu. *Records of the Zoological Survey of India* 97(1):145–162.
- Riehl, R., and H. A. Baensch. 1991. *Aquarien atlas*. Band. 1. Melle: Mergus, Verlag für Natur- und Heimtierkunde, Germany.
- Roberts, R. J., D. J. MacIntosh, K. Tonguthai, S. Boonyaratpalin, N. Tayaputch, M. J. Phillips, and S. D. Millar. 1986. Field and laboratory investigations into ulcerative fish disease in the Asia Pacific region. FAO, Bangkok, Thailand.
- Sarkar, L., and S. Banjeree. 2010. Breeding ground profile of food fish species in Damadar River System. *International Journal of Biology* 2(1):51–61.
- Saroniya, R. K., D. B. N. Saksena, and N. S. Nagpure. 2013. The morphometreic and meristic analysis of some *Puntius* species from central India. *Biolife* 1(3):144–154.
- Sen, N. 1995. Pisces. Pages 483–606 in *Fauna of Meghalaya, Part 1. Vertebrates*. State Fauna Series 4. Zoological Survey of India.

- Sen, N. 1999. Notes on a collection of fishes from Lohit, Tirap and Changlang districts of Arunachal Pradesh, India. *Records of the Zoological Survey of India* 97(2):189–204.
- Shafi, S., A. R. Yousuf, and M. Parveen. 2013. Length-weight relationship and breeding biology of *Puntius conchoni* (Hamilton, 1822) from Dal Lake, Kashmir. *International Journal of Innovative Research and Development* 2(2):299–312.
- Shaharom-Harrison, F., I. Anderson, A. Siti, N. Shazili, K. Ang, and T. Azmi. 1990. Epizootics of Malaysian cultured freshwater pond fishes by *Piscinoodinium pillularae* (Schaperclaus, 1954) Lom, 1981. *Aquaculture* 86:127–138.
- Shantakumar, M., and W. Vishwanath. 2006. Inter-relationships of *Puntius* Hamilton-Buchanan (Cyprinidae: Cyprininae) found in Manipur, India. *Zoos' Print Journal* 21(6):2279–2283.
- Shrestha, J. 1978. Fish fauna of Nepal. *Journal of Natural History Museum Tribhuvan University* 5(1–4):33–43.
- Shrestha, T. K. 2008. *Ichthyology of Nepal. A study of fishes of the Himalayan waters. Himalayan Ecosphere, Kathmandu, Nepal.*
- Singh, D. F., and G. M. Yazdani. 1993. Studies on the ichthyofauna of Nasik District, Maharashtra, India. *Records of the Zoological Survey of India* 90(1–4)(1992):195–201.
- Sterba, G. 1966. *Freshwater fishes of the world.* T.H.F Publications, Hong Kong.
- Talwar, P. K., and A. G. Jhingran. 1991. *Inland fishes of India and adjacent countries.* Oxford-IBH Publishing, New Delhi, India.
- Tonguthai, K. 1985. A preliminary account of ulcerative fish diseases in the IndoPacific region (a comprehensive study based on Thai experiences). Department of Fisheries Bangkok, Thailand.
- Varadi, L., A. Hidas, E. Varkonyi, and L. Horvath. 1995. Interesting phenomena in hybridisation of carp, *Cyprinus carpio* and rosy barb, *Barbus conchoni*. Pages 211–214 in *The carp - proceedings of the second aquaculture sponsored symposium, 6–9 September.* Budapest, Hungary.
- Varadi, L., and L. Horvath. 1993. Propagation system of Rosy barb, *Barbus conchoni* for production of stripped gametes. University of Agricultural Sciences, Institute of Animal Husbandary, Godollo, Hungary.
- Vishwanath, W., and J. Laisram. 2004. Two new species of *Puntius* Hamilton-Buchanan (Cypriniformes: Cyprinidae) from Manipur, India, with an account of *Puntius* species from the state. *Journal of the Bombay Natural History Society* 101(1):130–137.

Western Australian Department of Fisheries. 2013. [Source material did not give full citation for this reference.]

Yadav, B. E. 2003. Ichthyofauna of northern part of Western Ghats. Records of the Zoological Survey of India 215:1–39.