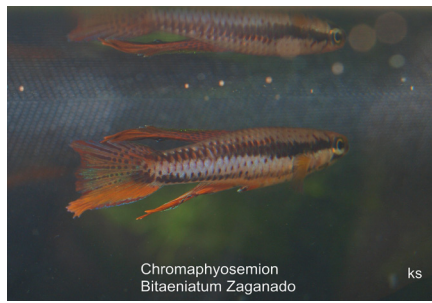




Chromaphyseion
Riggerbaci ABC 05-19

ks



Chromaphyseion
Bitaeniatum Zaganado

ks



Chromaphyseion
Bitaeniatum Lagos

ks



chromaphyseion
Splendopluere



Chromaphyseion
Melanogaster Lobe, JVC 08

ks



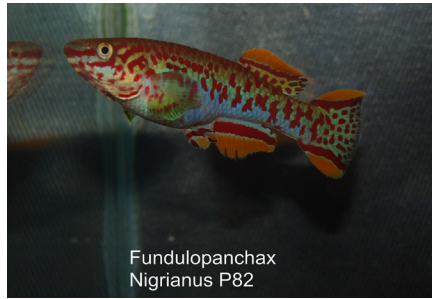
Aphyosemion Tirbaki
BSWG 97-8

ks



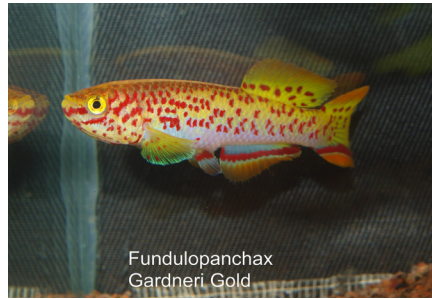
Fundulopanchax
amietii

ks



Fundulopanchax
Nigrianus P82

ks



Fundulopanchax
Gardneri Gold



Fundulopanchax
Scheeli

ks



sriptaphyseion
schmitti Juarzon



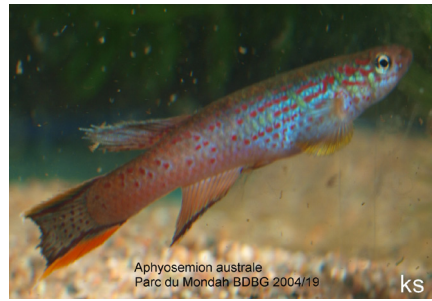
Schriptaphyseion
Etzeli

ks



Nimbapanchax
Petersi Bankopark

ks



Aphyosemion australe
Parc du Mondah BDBG 2004/19

ks



Aphyosemion australe
Gold

ks



Aphyosemion hera
Bengui 1-2 GJS 2000-29

ks



Aphyosemion Maginatum
Bengui 1-2 GJS 2000-29

ks



Aphyosemion ocellatum
Sika Sika GJS 2000-5

ks

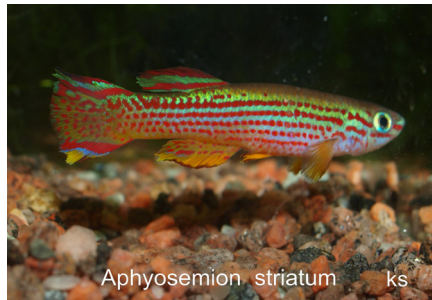


Aphyosemion Ogoense
ottogartneri Orange



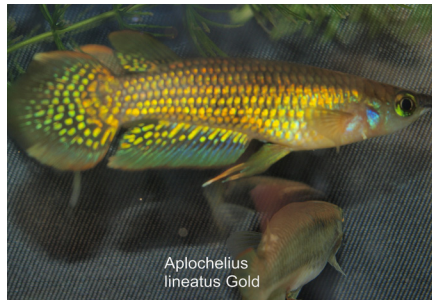
Aphyosemion aff pascheri
Mougue ABL 08-2000

ks



Aphyosemion striatum

ks



Aplochelius
lineatus Gold



Rivulus xiphioides "Crique Boulanger"

ks



Chromaphyseion Loenningi
32km East Kribi JVS-08