

WE GET YOU READY™



WE DELIVER. WE STOCK. WE MAINTAIN. WE TRAIN.
VISIT [CINTAS.COM](https://www.cintas.com) OR CALL 877.973.2811

Cintas First Aid & Safety Product and Services Guide Digital 2021

First Aid & Safety
Product and Services Guide

- FIRST AID
- SAFETY & PPE
- WATERBREAK®
- AEDs
- EYEWASH
- TRAINING

We've got you covered

Providing first aid & safety supplies to your employees is important to the success of your business. That's why over 250,000 businesses choose Cintas First Aid & Safety. We are a single source provider for your first aid, safety, training, AED, eyewash and employee hydration needs. Our services can help you keep your employees safe, productive and on the job. Cintas helps you manage the details with personal, van-delivered, onsite service so that the products you've selected are always stocked.

We know that being in business is hard and staying in business is even harder. With Cintas, you can focus on what you are good at and let our trained service professionals restock your first aid supplies, maintain your safety and personal protective equipment (PPE) inventory, check your AEDs, offer training and compliance courses of your choice, service your eyewash stations and provide clean, affordable filtered water.

Our goal is to help you and your employees get **Ready for the Workday®**.



Contents

First Aid	2	Sanitizers and wipes.....	38	Head protection.....	94	AED accessories and disposable oxygen.....	140
First aid cabinets.....	6	Outdoor skin protection.....	40	Fall protection and gas detection.....	104	Emergency Eyewash	142
Diabetes in the workplace.....	10	First aid instruments.....	42	Bloodborne pathogen/spill control.....	112	Self-contained.....	146
Fleet Replenishment Center.....	12	Food service first aid.....	46	Batteries and flashlights.....	116	Plumbed.....	148
Vehicle kits and mobile first aid.....	14	Safety and PPE	48	Safety signage.....	118	Accessories and supplemental.....	150
Oral medications.....	16	PPE inventory management.....	50	WaterBreak® and Hydration	120	Training and Compliance Courses	152
Bandages.....	24	Hand protection.....	52	Coolers and accessories.....	124	Onsite training.....	156
Tapes, wraps and gauze.....	28	Eye protection.....	60	YETI®.....	126	Online training.....	161
Burn care.....	30	Hearing protection.....	68	Electrolytes.....	128	Safety Management Suite.....	163
Emergency injury care.....	32	Respirators.....	78	Automated External Defibrillators (AEDs)	132		
Antiseptics and ointments.....	34	Apparel.....	84	AED units.....	136		
Blood clotting agents/comfort topicals.....	36						



First Aid **READY**[™]

Incidents happen during the workday — a cut finger, a minor burn, a headache, a cold. Cintas offers first aid products and customizable cabinets and kits to help respond to a workplace injury or illness.

FIRST AID PRODUCTS INCLUDE:

- First aid cabinets | 6
- Diabetes in the workplace | 10
- Fleet Replenishment Center | 12
- Vehicle kits and mobile first aid | 14
- Oral medications | 16
- Bandages | 24
- Tapes, wraps and gauze | 28
- Burn care | 30
- Emergency injury care | 32
- Antiseptics and ointments | 34
- Blood clotting agents and comfort topicals | 36
- Sanitizers and wipes | 38
- Outdoor skin protection | 40
- First aid instruments | 42
- Food service first aid | 46

First aid built for the workplace

STATISTICS

- There were 2.8 million nonfatal workplace injuries and illnesses reported by private industry employers in 2018.¹
- The total cost of work injuries in 2018 was \$170.8 billion.²
- Every 7 seconds, a worker is injured on the job.³
- In 2018, 34.2 million Americans, or 10.5% of the population, had diabetes.⁴
- It has been estimated that employers pay almost \$1 billion per week for direct workers' compensation costs alone.⁵

OSHA 29 CFR 1910.151(A)

"The employer shall ensure the ready availability of medical personnel for advice and consultation on matters of plant health."

OSHA 29 CFR 1910.151(B)

"In the absence of an infirmary, clinic, or hospital in near proximity to the workplace which is used for the treatment of all injured employees, a person or persons shall be adequately trained to render first aid. Adequate first aid supplies shall be readily available."

OSHA 29 CFR 1910.151(C)

"Where the eyes or body of any person may be exposed to injurious corrosive materials, suitable facilities for quick drenching or flushing of the eyes and body shall be provided within the work area for immediate emergency use."

ANSI/ISEA Z308.1-2015

"In deciding which class of kit is more appropriate for a given workplace, employers should consider the risks and task load of the work environment and the potential severity and likelihood of occurrence of an injury. Employers should also consider whether multiple first aid kits are needed, based on the number of employees, physical layout of the work environment and the remoteness of the worksite to emergency services. These same considerations can be taken into account when determining if a first aid kit should be augmented with additional supplies, as noted in the appendix of this standard."

TRAINING & COMPLIANCE COURSES — PAGE 152

- First Aid and CPR/AED
- Bloodborne Pathogens
- Emergency Preparedness

¹ 2018. US Bureau of Labor Statistics. Employer-Reported Workplace Injuries and Illnesses. <https://www.bls.gov/news.release/pdf/osh.pdf>

² 2018. National Safety Council. Work Injury Costs. <https://injuryfacts.nsc.org/work/costs/work-injury-costs/>

³ 2019. National Safety Council. Workplace Injuries By the Numbers. <https://www.nsc.org/work-safety/tools-resources/infographics/workplace-injuries>

⁴ 2019. American Diabetes Association. Statistics about Diabetes. <https://www.diabetes.org/resources/statistics/statistics-about-diabetes>

⁵ United States Department of Labor. Business Case for Safety and Health. <https://www.osha.gov/dcsp/products/topics/businesscase/costs.html>

First Aid Products

First aid products from Cintas are packaged with the workplace in mind, helping you save time so you can focus on your business.

- **Oral tablets:** single-dose, tamper-evident, non-drowsy formulas
- **Bandages:** durable, water-resistant, sweat-resistant
- **Ointments:** single-dose, tamper-evident packaging
- **Burn care:** sprays and single-use packets help avoid contamination

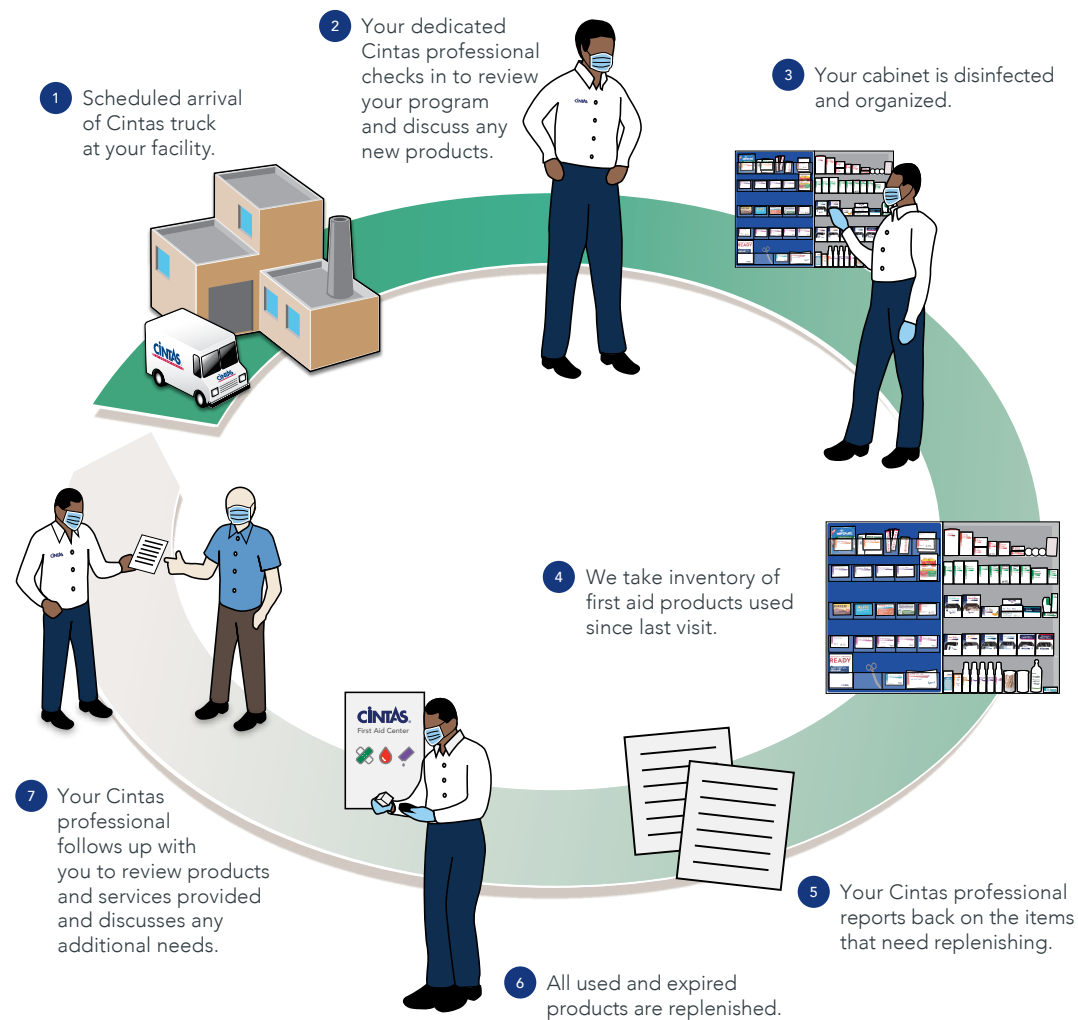
CINTAS
FIRST AID & SAFETY

First aid cabinets

You need a first aid cabinet that's easy to use and stocked with effective, quality supplies. Cintas first aid cabinet service can help you achieve both. Our first aid cabinet service includes regular, onsite service with a representative dedicated to your business.

You customize your first aid cabinet from our vast selection of product offerings, and your representative helps you maintain it — on whatever schedule works best for you and your business. Stocked with over-the-counter medications that are color-coded, tamper-evident and single-unit dosage, your first aid cabinet is built for workplace convenience.

HOW THE SERVICE WORKS



Cintas first aid cabinets are:

- ANSI B compliant if you choose our standard fill
- Color-coded and wall-mounted
- Filled with tamper-evident, single-unit dosed products
- Customizable to meet the needs of your business
- Regularly serviced by our onsite service professionals







1 Workplace First Aid Cabinet

- Meets ANSI B Standard Fill requirement*
- Most products are single-dose and tamper-evident
- Cintas maintains and refills on your schedule
- 5 Shelf (28 ¼" X 19 ¼" X 5 ½") or 4 Shelf (22" x 19" x 5½")

Part Numbers: 5 Shelf • 15129 4 Shelf • 14129

For food service first aid cabinets, see page 46

EXPLANATION OF THE FIRST AID ICON SYSTEM AND COLOR-CODING

- | | |
|---|---|
|  <p>Antiseptics</p> <ul style="list-style-type: none"> • Sprays and wipes • Topical ointments |  <p>Emergency</p> <ul style="list-style-type: none"> • Wound care and bleeding control • Gauze and ice packs |
|  <p>Bandages</p> <ul style="list-style-type: none"> • Variety of sizes and shapes • Water-resistant and latex-free products |  <p>Eye Care</p> <ul style="list-style-type: none"> • Eye wash and eye drops • Flushing bottles/cups |
|  <p>Burn Care</p> <ul style="list-style-type: none"> • Variety of sprays and gels • Non-stick gauze |  <p>Pain/Illness/Comfort Tablets</p> <ul style="list-style-type: none"> • Over-the-counter medication for pain and fever • Allergy and other discomfort |
|  <p>Productivity</p> <ul style="list-style-type: none"> • Lotions and comfort products | |

*If you choose Cintas Standard Fill upon installation

Our standard first aid cabinet can be customized over time to fit your needs.

Products recognized by the American Diabetes Association®



Emergency



Bandages



Pain, Illness, Comfort Tablets



Eye Care



Burn Care

Antiseptics



Productivity



First Aid Pocket Guide

Name Brand Products



Diabetes in the Workplace

You can now have your first aid cabinet stocked with products recognized by the American Diabetes Association® as suitable for people with diabetes in the workplace.¹

21 SECONDS

1.5 million Americans aged 20 years or older are newly diagnosed with diabetes each year, one every 21 seconds²

1 IN 10

34.2 million, or 1 in 10 Americans have diabetes²

88 MILLION

American adults have diabetes or prediabetes²



¹ ADA recognizes the type of products listed as suitable for people with diabetes. ADA does not endorse any brand of product or service.

² American Diabetes Association: professional.diabetes.org/fastfacts



1 Pain Away® (Comparable to Excedrin® Migraine)

- Works quickly to ease headaches, muscle pain, cramps, toothaches and arthritis pain
- Convenient, tamper-evident, single-dose, non-drowsy
- Contains: Acetaminophen 250 mg, Aspirin 250 mg, Caffeine 65 mg

Part Numbers: M • 111589
L • 111599
XL • 111569



4 Glucose

- Increases blood sugar when low by delivering 15 grams of glucose
- Rapid dissolving, fast acting

Part Number: 122249



7 Bleed Stop Gauze

- Hemostatic gauze pad for temporary external use to control bleeding
- Sterile 4" x 4" pad

Part Number: 10309



2 QuikHeal™ Hydrocolloid Bandage

- Long-lasting, hydrocolloid-based gel technology promotes faster healing and helps reduce scarring
- Heals minor cuts, scrapes, abrasions, lacerations, blisters and scalds
- Box contains 5 patches and 5 strips

Part Number: 33129



3 Hand Lotion

- Specially formulated with Vitamin E and aloe vera
- Non-greasy, industrial strength formula to aid in healing of chapped, itchy and dry skin

Part Numbers: S • 100639
M • 100619
L • 100629



5 Liquid Bandage

- Waterproof, long lasting, sting-free
- Conforms to body contours

Part Number: 12221



6 WoundSeal®

- Effective topical powder that helps stop bleeding
- Forms a protective barrier in seconds and protects the wound with anti-microbial properties

Part Numbers: Applicator • 1030400
Pour Pack • 1030300

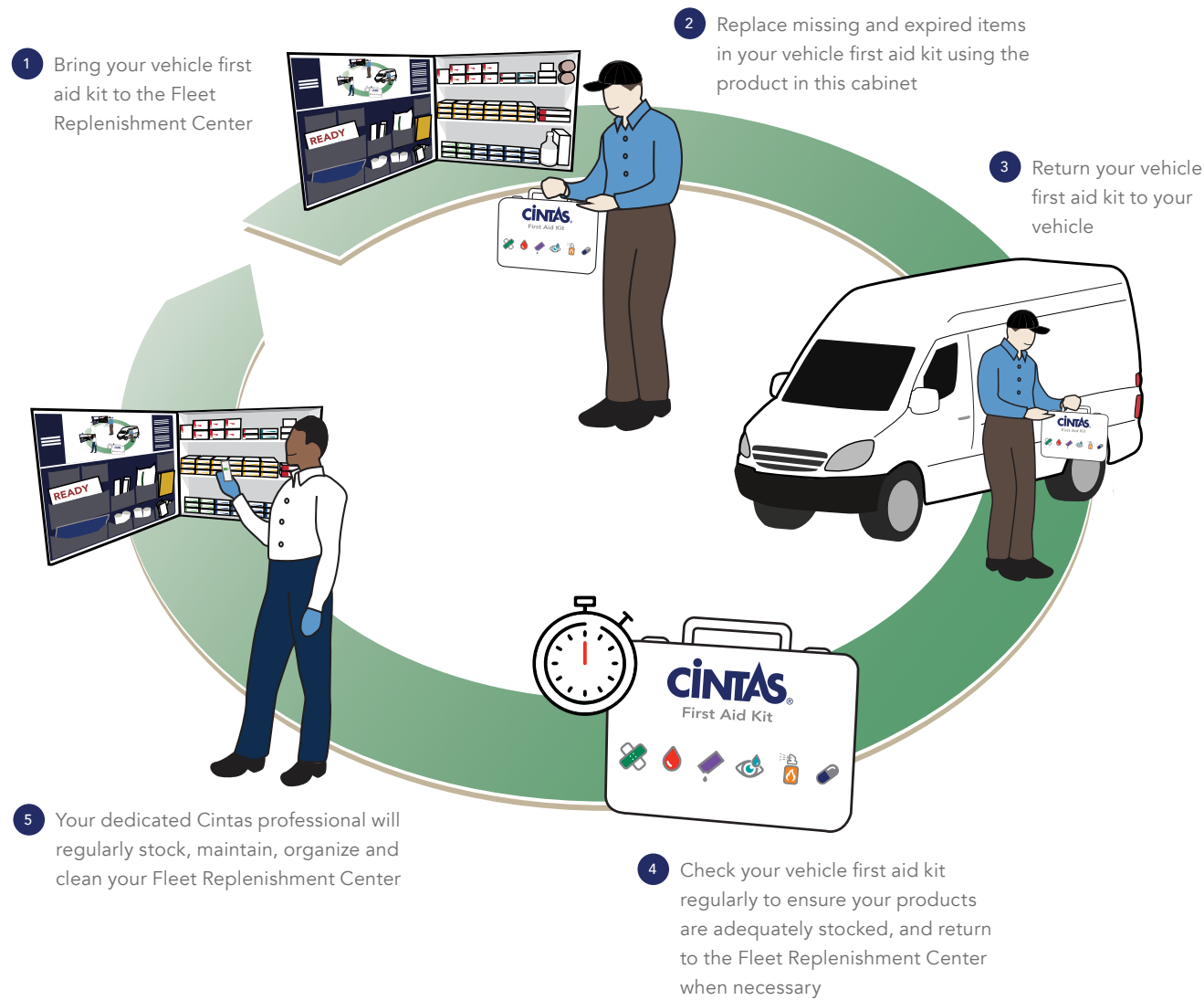


American Diabetes Association® cabinet indicator included with purchase of recognized products.

Fleet Replenishment Center

When you're prepared for anything, you can handle anything. If your business is on the move, Cintas First Aid & Safety has a Fleet Replenishment Center designed to help you keep your mobile first aid kits stocked with the supplies you choose.

HOW THE SERVICE WORKS



1 Fleet Replenishment Center

- Unitized boxes designed for mobile first aid kits
- Multiples of each product to support fleets of every size
- Instructional label inside to help your employees maintain their mobile first aid

Part Number: 13199



Vehicle kits and mobile first aid



1



2



3



4



5

1 36-Unit Deluxe Vehicle Kit

- Meets ANSI A Standard Fill requirement
- Metal case filled with a wide variety of basic first aid products
- Dust and moisture resistant
- 9½" x 14" x 2½"

Part Number: 20929

2 20-Unit Standard Vehicle Kit

- Meets ANSI A Standard Fill requirement
- Metal case filled with an assortment of basic first aid products
- Dust and moisture resistant
- Metal (7" x 9½" x 2½") or Plastic (6½" x 9¾" x 2¾")

Part Numbers: Metal • 20429 Plastic • 20529

3 Small Mobile First Aid Bag

- Portable, lightweight, soft-sided trauma bag contains essential items for mobile first aid care
- Includes a comprehensive selection of basic first aid products
- Handy zippered side pockets offer extra organizing space to keep supplies orderly
- 11" x 7" x 4½"

Part Number: 21629

4 Large Mobile First Aid Bag

- Rigid, toolbox-style kit or soft-sided cordura bag
- Packaged with all the essentials for immediate care in life-threatening emergencies
- Handy zippered side pockets offer extra organizing space to keep supplies orderly
- Hard Case (19" x 10¾" x 10⅛") or Soft-Sided Bag (17" x 9" x 7")

Part Numbers: Hard Case • 22029 Soft-Sided Bag • 22129

5 Bleeding Control Kit

- Designed specifically for bleeding emergencies
- Kit contains: Instruction card, SWAT-T™ Tourniquet, 3" x 48" Compression Bandage, 4" x 4" Hemostatic Pad 2-pack, nitrile gloves, roller gauze, trauma shears and permanent marker
- Premium Kit includes the above plus an upgraded SAM XT tactical-grade tourniquet, H-vent chest seal, and emergency blanket

Part Numbers: Standard Single Unit Kit • 20629
 Standard Individual Refill Packet • 613769
 Three Unit Wall Bracket • 613772
 Premium Single Unit Refill Packet 615509
 Standard Three Unit Kit • 613771
 Single Unit Wall Bracket • 613770
 Premium Single Unit Kit (pictured) • 615508
 Premium Unit Wall Bracket • 613772

Pain, fever and inflammation



1 Pain Away® (Comparable to Excedrin® Migraine) (Recognized as suitable for people with diabetes in the workplace)

- Works quickly to ease headaches, muscle pain, cramps, toothaches and arthritis pain
- Convenient, tamper-evident, single-dose, non-drowsy
- Contains: Acetaminophen 250 mg, Aspirin 250 mg, Caffeine 65 mg

Part Numbers: M • 111589 L • 111599 XL • 111569

2 Ibuprofen (Comparable to Advil® and Motrin® IB)

- Reduces fever and inflammation
- Recommended for muscle strain and arthritis pain
- Contains: Ibuprofen 200 mg

Part Numbers: M • 111989 L • 111999 XL • 111969

3 Acetaminophen (Comparable to Tylenol® Extra Strength)

- Stomach-friendly relief from pain and fever
- Convenient, tamper-evident, single-dose
- Contains: Acetaminophen 500 mg

Part Numbers: M • 111389 L • 111399 XL • 111369



Don't let common ailments like headaches, upset stomach and cold symptoms slow down your business. Cintas can help with first aid tablets packaged with the workplace in mind. Stocked right on your shelves with built-in features including tamper-evident, single-dose packaging and non-drowsy formulas, your employees can get the relief they need and productivity can keep moving right along. When illness or injury occurs, Cintas first aid products can help relieve symptoms, ultimately helping you reduce lost time and boost morale.

4 Backache & Muscle Relief

- Fast relief for aches and pains
- Non-drowsy, sugar-free, film coated, tamper-evident tablet
- Contains: Acetaminophen 250 mg, Magnesium Salicylate-Tetrahydrate 290 mg, Caffeine 50 mg

Part Number: 111830

5 Original Strength Aspirin (Comparable to Bayer®)

- Helps relieve minor aches, pain and fever
- Convenient, tamper-evident, single-dose
- Contains: Aspirin 325 mg

Part Numbers: S • 111180 M • 111190

6 Cramp Relief (Comparable to Midol®)

- Relief from cramps, bloating, headache and backache
- Free of aspirin, sugar, and salt
- Contains: Acetaminophen 325 mg, Pamabrom 25 mg

Part Number: 111730

7 Naproxen Sodium (Comparable to Aleve®)

- Provides relief from a wide variety of pain, fever, swelling and stiffness
- Convenient, tamper-evident, single-dose
- Contains: Naproxen 225 mg

Part Number: 121630

Cold, cough and congestion



1 Cold Relief (Comparable to Mucinex® Max Sinus and Pain and TYLENOL® Sinus Severe)

- Tackles cold symptoms and provides relief from pain, stuffy nose and chest congestion
- Convenient, tamper-evident, single-dose
- Contains: Acetaminophen 325 mg, Guaifenesin 200 mg, Phenylephrine HCl 5mg

Part Numbers: M • 112039 L • 112049

2 Cold-Eeze® Zinc Cold Remedy

- Relieves cold symptoms such as sore throat, runny nose, cough and congestion
- Tropical fruit-flavored zinc lozenge
- Contains: Zincum Gluconicum 2x 13.3 mg

Part Numbers: S • 119279 M • 119289

3 Cough Relief DM Singles (Comparable to Robitussin® DM)

- Controls coughs and loosens chest congestion
- Convenient, tamper-evident, single-dose
- Contains: Dextromethorphan HBr 10 mg, Guaifenesin 100 mg

Part Number: 113919

4 Decongestant (Comparable to Sudafed® PE)

- Clears stuffy nasal passages associated with common cold, allergies and sinusitis
- Convenient, tamper-evident, single-dose
- Contains: Phenylephrine HCl 5mg

Part Numbers: S • 112229 M • 112239 L • 112249

5 Sinus Relief (Comparable to Sudafed® PE Pressure + Pain)

- Non-drowsy relief from symptoms of sinus headache pain and congestion
- Convenient, tamper-evident, single-dose
- Contains: Acetaminophen 325 mg, Phenylephrine 5 mg

Part Numbers: M • 112439 L • 112449

6 Allergy Relief (Comparable to Claritin®)

- Relieves allergy symptoms such as watery eyes, itchy nose/eyes/throat, sneezing and hives
- Convenient, tamper-evident, non-drowsy, single-dose
- Contains: Loratadine 10 mg

Part Number: 119260

Sore throat



1 Honey-Lemon Cough Drops (Comparable to Halls®)

- Relieves symptoms from coughs and colds
- Extra menthol controls cough fast
- Contains: Menthol 7.5 mg

Part Numbers: M • 113629 L • 113639

2 Cherry Cough Drops (Comparable to Halls®)

- Relieves symptoms from coughs and colds
- Pleasant cherry flavor with menthol
- Contains: Menthol 5.8 mg

Part Numbers: M • 113529 L • 113539

3 Sore Throat Lozenges (Comparable to Cepacol®)

- Relieves symptoms from coughs and colds
- Cherry flavored
- Contains: Benzocaine 15 mg, Menthol 3.6 mg

Part Number: 574143

Stomach and indigestion



4 Antacid (Comparable to TUMS®)

- Relieves indigestion and heartburn
- Fruit-flavored chewable tablets
- Contains: Calcium Carbonate 500 mg

Part Numbers: M • 115089 L • 115099 XL • 115069

5 Peptum™ (Comparable to Pepto-Bismol®)

- Relieves upset stomach, diarrhea, heartburn, indigestion and nausea
- Convenient and tamper-evident
- Contains: Bismuth Subsalicylate 262 mg

Part Number: 119310

6 Anti-Diarrheal (Comparable to Imodium® AD)

- One dose relieves diarrhea symptoms
- Convenient and tamper-evident
- Contains: Loperamide Hydrochloride 2 mg

Part Number: 119250

Name brand products



1



2



3



4



5



6



7



8



9

1 Pepto-Bismol®

- Chewable tablet provides digestion relief for five symptoms: heartburn, upset stomach, nausea, indigestion, diarrhea
- Contains: Bismuth Subsalicylate 262 mg

Part Number: 587819

2 Aleve®

- Pain reliever and fever reducer to provide relief for up to twelve hours
- Contains: Naproxen Sodium 220 mg

Part Number: S • 121220 M • 121210

3 DayQuil™ Severe

- Helps relieve multiple cold symptoms: pain, chest congestion, cough, and stuffy nose
- Contains: Acetaminophen 325 mg, Dextromethorphan HBr 10 mg, Guaifenesin 100 mg, Phenylephrine HCl 5 mg

Part Number: 573772

4 Mucinex® DM

- Loosens and controls cough with a bi-layer tablet for extended release
- Contains: Dextromethorphan HBr 30mg and Guaifenesin 600 mg

Part Number: 79191

5 Bayer®

- Helps relive minor aches, pain and fever
- Contains: Aspirin 325 mg

Part Number: 122110

6 Glucose (Recognized as suitable for people with diabetes in the workplace)

- Increases blood sugar when low
- Delivers 15 grams of glucose
- Rapid dissolving, fast acting

Part Number: 122249

7 Advil®

- Pain reliever for headaches, muscle aches, minor arthritis and joint pain
- Contains: Ibuprofen 200 mg

Part Number: 121020

8 Tylenol® Extra Strength

- Provides temporary relief of minor aches and pains and helps reduce fever
- Contains: Acetaminophen 500 mg

Part Number: 121410

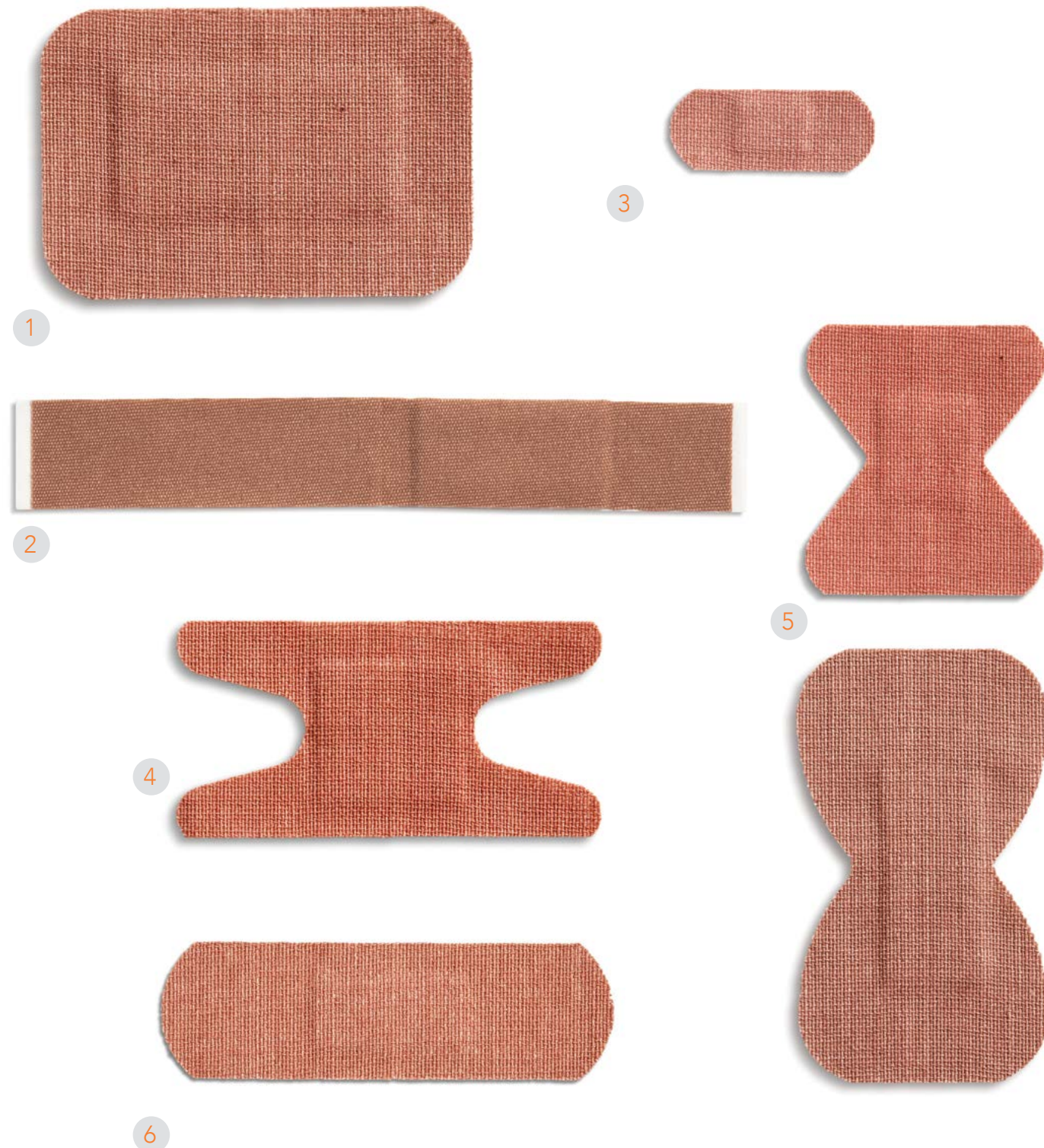
9 Alka-Seltzer®

- Fast relief for heartburn, upset stomach, acid indigestion and aches and pain
- Contains: Anhydrous Citric Acid 1000 mg, Aspirin 325mg (NSAID), Analgesic Sodium Bicarbonate 1916mg

Part Number: 121600

Fabric bandages

Durable, flexible, super strong adhesive, comfortable fabric, extra absorbent bandages built for tough work environments.



1 Large Patch

- Versatile comfort and protection for larger wounds
- Stays put on knees and elbows
- Island pad, latex-free, elastic
- 2" x 3"

Part Number: 44429

2 XtraLong Strip

- Extra-long, lightweight fabric strip
- Allows you to wrap twice around most fingers
- Offset pad, latex-free, elastic
- $\frac{3}{4}$ " x $4\frac{11}{16}$ "

Part Number: 43729

3 Junior Strip

- Ideal for minor scrapes and cuts
- Durable, absorbent pad
- Island pad, latex-free, elastic
- $\frac{5}{8}$ " x $1\frac{1}{2}$ "

Part Number: 43859

4 Knuckle Bandage

- Designed for long wear and protection of knuckle wounds
- Shaped for flexibility and convenience
- Island pad, latex-free, elastic
- $1\frac{1}{2}$ " x 3"

Part Number: 43259

5 Fingertip Bandage

- Unique shape for hard-to-cover spots on the ends of fingers and toes
- Flexible woven fabric and strong adhesive
- Island pad, latex-free, elastic

Part Numbers: $1\frac{3}{4}$ " x 2" • 43059 $1\frac{3}{4}$ " x 3" • 43129

6 Elastic Strip

- Created for use in tough work environments
- All-purpose shape with flexible, durable, industrial strength stretch fabric
- Island pad, latex-free, elastic
- $\frac{7}{8}$ " x 3"

Part Number: 44269

Comfort bandages

Lightweight, breathable, water-resistant, highly woven fabric that stretches and conforms to the body for maximum mobility



1 Comfort Knuckle Bandage

- Designed for long wear and protection of knuckle wounds
- Shaped for flexibility and convenience
- Island pad, latex-free
- 1½" x 3"

Part Number: 43679

2 Comfort Fingertip Bandage

- Unique shape for hard-to-cover spots on the ends of fingers and toes
- Flexible woven fabric and strong adhesive
- Island pad, latex-free
- 1¾" x 3"

Part Number: 43669

3 Comfort Strip

- Lightweight, breathable, water-resistant strip
- All-purpose shape
- Island pad, latex-free
- 1" x 3"

Part Number: 43659

4 Comfort Dot Bandage

- Ultra-soft fabric bends for extra comfort
- Water-resistant
- 1.25" x 1"

Part Number: 43959

Specialty bandages



1 Waterproof Clear Strip

- Superior protection against water, dirt and germs
- Clear, breathable material with a low profile look
- 3¼" x 2¾"

Part Number: 43658

2 Plastic Strip

- Traditional bandage for minor cuts, scrapes and scratches
- Sterile, easy to use, extra strong adhesive
- Island pad, latex-free

Part Numbers: 1" x 3" • 31069 ¾" x 3" • 31569

3 Liquid Bandage (Recognized as suitable for people with diabetes in the workplace)

- Waterproof, long lasting, sting-free
- Conforms to body contours

Part Number: 12221

4 QuikHeal™ Hydrocolloid Bandage (Recognized as suitable for people with diabetes in the workplace)

- Long-lasting, hydrocolloid-based gel technology promotes faster healing
- Heals minor cuts, scrapes, abrasions, lacerations, blisters and scalds
- Helps reduce scarring
- Box contains 5 patches and 5 strips

Part Number: 33129

For specialty food service bandages, see page 44

Tapes, wraps and gauze



1 Sterile Gauze Pads

- Perfect for cleaning minor cuts and scratches or applying medications
- Sterile gauze
- Multiple size options

Part Numbers: 2" x 2" • 70619 3" x 3" • 70819 4" x 4" • 71019

2 Ready-Rip®

- Self-adherent, lightweight, comfortable wrap
- Supports strains, sprains and other injuries
- Easy-to-tear woven material requires no scissors

Part Numbers: 2" • 82420 3" • 82430 4" • 82440

3 Roller Gauze

- Used to hold other bandages or dressings in place
- Available in sterile or non-sterile
- Highly absorbent

Part Numbers: Sterile: 2" • 72020 3" • 72030 4" • 72040
Non-Sterile: 2" • 72220 3" • 72230 4" • 72240

4 Adhesive Tape

- Cloth-backed, vinyl-coated, waterproof tape
- Strong adhesive securely holds dressings and bandages in place
- Cuts tape without scissors

Part Numbers: 1/2" • 80479 1" • 80489

5 Elastic Tape

- Durable, stretchy, ventilated cloth tape
- Supports strains, sprains and other injuries
- Adheres securely and stays flexible for comfort

Part Number: 1" • 80200

6 Elastic Wrap (Comparable to Ace®)

- Provides dependable compression and support for sprains and strains
- Long-lasting stretch and durability
- Metal clips included

Part Numbers: 2" • 82620 3" • 82630 4" • 82640

Burn care



1 Burn Spray

- Treatment for minor burns
- Convenient pump allows no-touch application
- Contains lidocaine to help with pain relief

Part Number: 62029

2 Insta-Cool™ Cold Spray

- Treats minor burns and bruises
- Topical coolant that reduces heat, swelling and pain on injured areas
- Instant superficial topical anesthetic for strains, sprains and muscle spasms, 4 oz

Part Number: 63039

3 Cool&Soothe™

- Treats minor burns and eases pain
- Keeps burn wounds moist to provide for better healing
- 1½" x 2"

Part Number: 164010

4 Non-Stick Pads

- Non-adherent, sterile pad
- Allows fluids to pass through and be absorbed, yet not stick to wounds
- Effective first aid treatment for minor burns

Part Number: 73029

For more food service first aid products, see page 44

5 Water-Jel® Sterile Burn Dressings

- Formulated gel dressing designed to treat burns
- Immediately helps to lower skin temperature and ease pain
- Comes in a variety of sizes and shapes to treat various injuries

Part Numbers: 2" x 6" • 160820 4" x 4" • 163020 4" x 16" • 160860
8" x 18" • 160880 Face Dressing • 160900 Hand Dressing • 160870

6 Burn Relief Gel

- Immediately cools burned skin, eases pain and protects wounds from further contamination
- Moisturizes as it cools to help prevent peeling

Part Numbers: S • 163050 L • 163010

7 Water-Jel® Fire Blankets

- Helps put out the fire, stops burn progression, cools the skin, eases pain and protects against air contamination
- 100% worsted wool blanket with intercellular weave that absorbs up to 13 times its own weight
- Blanket is soaked in water-based/water-soluble bacteriostatic and biodegradable gel

Part Numbers: 3' x 2.5' • 160660 6' x 5' • 160620 8' x 6' - 160600
3' x 2.5' Bracket • 160670 6' x 5' Bracket • 160630 8' x 6' Bracket • 160610

8 Water-Jel® Soft-Sided Burn Kit

- Soft-sided, heavy-duty nylon carry bags hold first aid supplies that keep you prepared for burn emergencies
- Small kit contains: burn dressings (One 12" x 16"; Two 4" x 16"; Two 4" x 4"), two 3" rolls of gauze and scissors
- Large kit contains: one 36" x 30" burn wrap, one 12" x 16" face mask, burn dressings (one 8" x 8"; one 4" x 16"; three 4" x 4"), four 3" roll of gauze and scissors

Part Numbers: S • 160460 L • 160470

Emergency injury care



1



2



3



4



5



6

1 Instant Ice Packs

- Easy-to-use and squeeze-activated for immediate use
- Cold therapy for sprains, strains, swelling and bruises
- Convenient, compact, no refrigeration required

Part Numbers: S • 91019 L • 92019

2 Triangular Bandage

- Use as an arm sling, cravat bandage or cover for head dressing
- Individually poly-bagged, non-sterile
- 40" x 40" x 56", includes 2 safety pins and 1 bandage

Part Number: 180069

3 CPR Mask

- Includes one-way valve
- Bite block helps keep the patient's airway open
- Flexible, 5" x 4½"

Part Number: 170429

4 Tourniquets

- Stops a wound from bleeding
- Easy to use, latex-free
- 18" x 1", 2 tourniquets per box

Part Number: 180049

5 Trauma Pads

- High absorbent padding protects large wounds
- Quick wick padding
- Individually sealed in sterile wrapper, 5" x 9"

Part Number: 4 Pads • 592242

6 24" Padded Aluminum Splint

- Padded for comfort, conforms to any shape
- Waterproof, lightweight, latex-free
- Versatile, used in a variety of applications

Part Number: 592243

Antiseptics and ointments



1 Hydrogen Peroxide Spray

- Antiseptic spray used to treat minor scrapes and abrasions
- Convenient, environmentally friendly pump spray
- 2 oz

Part Number: 50239

2 Antiseptic Spray

- Quick-drying pump spray antiseptic
- Helps prevent infection, protects cuts, scratches and abrasions
- Benzalkonium chloride, 13%
- 2 oz

Part Number: 61029

3 Isopropyl Alcohol Spray

- Isopropyl Alcohol (70%) in a convenient pump spray
- Prevents waste and cross-contamination
- Helps clean wounds and promote healing
- 2 oz

Part Number: 50539



4 Antiseptic Wipes

- Individually sealed towelettes saturated with benzalkonium chloride
- Provides quick, effective cleaning of minor cuts and abrasions
- Helps clean and prevent infections

Part Numbers: S • 50030 M • 50009

5 Alcohol Wipes

- Saturated with isopropyl alcohol
- Cleans wounds and surrounding skin areas and maintains germ-free surfaces
- Helps clean and prevent infections

Part Numbers: S • 50430 M • 50429

6 Triple Antibiotic Ointment (Comparable to Neosporin®)

- Topical remedy ointment for all types of cuts, scratches and abrasions
- Helps prevent infection and speeds healing

Part Numbers: S • 100039 M • 100019

7 First Aid Cream

- Non-greasy, pain-relieving antiseptic cream with lidocaine
- Treats minor cuts, scratches and insect bites

Part Numbers: S • 101239 M • 101219

Blood clotting agents and comfort topicals



1 Super-Stop™ BloodClotter

- Convenient first aid spray that helps prevent infection in minor wounds with antiseptic benzethonium chloride
- Controls superficial bleeding on contact by forming a porous, skin-like protective bandage

Part Number: 3 oz. Spray • 64039

2 Bloodstopper Wrap

- Quick stick, water-resistant, cellular foam
- Waterproof film prevents leakage and contamination while foam pad absorbs and retains fluid

Part Number: 562567

3 WoundSeal® (Recognized as suitable for people with diabetes in the workplace)

- Effective topical powder that helps stop bleeding
- Forms a protective barrier in seconds and protects the wound with anti-microbial properties

Part Numbers: WoundSeal® + Applicator • 1030400 WoundSeal® Pour Pack • 1030300

4 Hydrocortisone

- Fast-acting relief from pain and itching of minor skin irritations, such as insect bites and rashes
- Single-use packets contain 1% hydrocortisone, 2 oz pump spray contains 2% diphenhydramine hydrochloride

Part Numbers: S • 100439 M • 100419 Spray • 61109

5 Lip Aid Ointment (Comparable to Burt's Bees®)

- Medicated formula provides relief for cold sores and dry, cracked lips
- Contains mineral oil, beeswax, Vitamin E, coconut oil and pomegranate flavor

Part Number: 102435

6 Dental Relief Ointment (Comparable to Orajel®)

- Antiseptic, anesthetic ointment for temporary relief from minor mouth pain from toothaches, dentures and cold sores

- Individual packets help control cross-contamination

Part Number: 102835

7 Hand Lotion (Recognized as suitable for people with diabetes in the workplace)

- Specially formulated with Vitamin E and aloe vera
- Non-greasy, industrial strength formula to aid in healing of chapped, itchy and dry skin

Part Numbers: S • 100639 M • 100619 L • 100629

8 Biofreeze® Muscle Relief

- Offers temporary relief from the minor aches and pains of sore muscles and joints
- Long-lasting pain relief for up to 6 hours

Part Number: 102640

Sanitizers and wipes

1



2



3



4



5



6



1 Lysol® Disinfecting Wipes

- Tested and proven effective against the COVID-19 virus*
- Each thick pre-moistened wipe kills 99.9% of viruses and bacteria — including 8 cold and flu viruses**
- Effective against many viruses in as little as 2 minutes
- This product meets surface disinfection recommendations from OSHA’s Bloodborne Pathogen Standard***
- Powerful cleaner to cut through tough soils
- Appropriate for use on electronics and touch screens, including smartphones, tablets, monitors, keyboard, mouse and remote controls
- 80 count pack

Part Number: 617989

2 Germ-X® Hand Wipes

- 100 count
- Kills 99.99% of many common harmful germs and bacteria
- Moisturizing with Vitamin E
- Convenient individually packaged wipes

Part Number: 616676

3 The Safety Director® All-Purpose Wipers

- Up to 3X stronger than ordinary paper towels
- 2X better softness and absorbency than ordinary paper towels
- Convenient pop-up box for easy dispensing

Part Number: 94400

4 The Safety Director® Heavy Duty Hand & Surface Cleaner

- Features a soft side and abrasive side for tougher cleaning
- Features an advanced citrus-based D-Limonene formula
- Includes 75 wipes in an easy-to-use, pull-through snap cap canister

Part Number: 251430

5 P.A.W.S.™ Hand Wipes

- Formulated with 66.5% ethyl alcohol to help meet CDC, APIC, OSHA handwashing recommendations
- Sanitizes while removing soil and debris from hands
- Available in single-use packets or dispensing canister

Part Numbers: 50 Count • 50590 160 Count Canister • 5064 100 Count Box • 50620

6 X3 Hand Sanitizer

- Kills 99.9% of germs that cause diseases
- Gentle, alcohol-free, fragrance-free
- No sticky feel

Part Numbers: 2.5 oz • 238000 8.5 oz. • 239000

*Kills SARS-CoV-2 on hard, non-porous surfaces (in 2 minutes)

**When used as directed

***Effective against HIV-1 (AIDS Virus) and Hepatitis B Virus

Outdoor skin protection



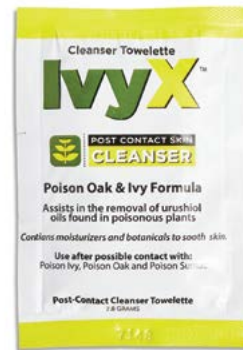
1



2



3



4



1 SunX™ Sunscreen

- Non-greasy, broad spectrum, SPF 30 sunscreen lotion with a pleasant cedar fragrance
- Sweat-proof, PBA-free, contains skin-soothing aloe vera and Vitamin E
- Available in single-use portable packets or pump spray

Part Numbers: 50 Packets • 78397 32 oz Flip Top • 8310929

2 BugX30® Insect Repellent

- Used to repel mosquitoes, ticks, fleas, chiggers, black flies, sand flies and deer flies
- Contains 30% DEET
- Available in single-use portable packets or pump spray

Part Numbers: 25 Packets • 140560 Pump Spray • 182020

3 IvyX™ Pre-Contact & Cleanser

- Helps prevent poison ivy, poison oak and poison sumac allergic reactions
- Pre-contact towelettes are used before contact with the poisonous plant
- Individually wrapped, single-use towelettes, 25 per box

Part Numbers: Pre-Contact • 140520 Cleanser • 140540

4 Sting Wipes

- Individually wrapped insect and bee sting relief medicated pads
- Provide temporary relief of itching and pain from insect bites and stings
- Ideal for outdoor workers

Part Number: 182019

First aid instruments



1



3

5



2



4



6

1 Splinter Out™

- Helps easily remove splinters with a sharp tri-bevel point
- Sterile and disposable for one-time use, eliminating the need to sanitize instruments

Part Number: 10 Count • 150620

2 Disposable Tweezers

- Single-use and disposable for one-time use, eliminating the need to sanitize instruments
- High-grade metal tweezers

Part Number: 3 Count • 150110

3 Dumont Forceps

- Used for the removal of small foreign objects with needle point precision

Part Number: 150100

4 Lister Bandage Scissors

- Highly polished surgical steel scissors
- Blunt tip with angled lower blade helps to safely remove first aid bandages and dressings

Part Numbers: 4½" • 150800 5½" • 150820 7½" • 150900

5 EMT Utility Scissors

- Made with quality stainless steel and enlarged handles for a comfortable, functional grip
- Easily cuts through clothing in emergencies

Part Number: 150920

6 Eye Magnet with Loop

- Designed to remove metallic and non-metallic objects from the eye with minimal intrusion
- Handle edges are designed to help create a firm grip for precision

Part Number: 150420

First aid instruments

7



8



9



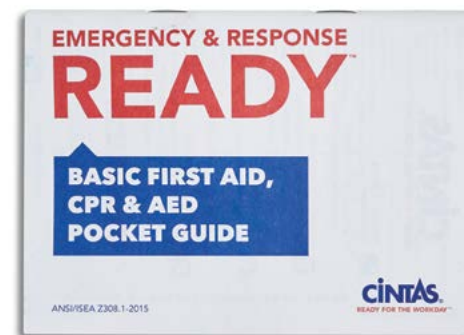
10



11



12



7 Wound Closures

- Two sizes of butterfly bandages to help secure small wounds and incisions
- Sterile, latex free

Part Number: 32069

8 The Safety Director® Rescue Blanket with Case

- Durable fire-retardant wool
- Provides warmth and comfort for shock management, fire victims and febrile, convulsive patients or those suffering from hypothermia
- Rugged vinyl case keeps blanket clean and is design for quick deployment

Part Number: 72" x 80" • 261209

9 Disposable Silver Rescue Blanket

- Portable and lightweight design helps retain body heat
- Waterproof and weatherproof

Part Number: 56" x 84" • 261400

10 Disposable Thermometer

- Single-use and disposable to help prevent cross contamination and infection
- Meets ASTM accuracy requirements

Part Number: 4 Count • 151119

11 Cotton Tipped Applicators

- Soft application with the cotton tip and wooden handle
- Can be used for both cleaning the area around a wound and applying ointment

Part Numbers: Large Box - 3" • 70010 XL - 3" • 70040 XL - 6" • 70240

12 First Aid Guide

- Pocket-sized for quick reference and available in English and Spanish
- Provides a general guide to basic first aid topics, as well as CPR, shock, burn care, and bleeding emergencies

Part Number: 151629



Food service first aid centers

Our standard, wall-mountable food service first aid cabinets are stocked with a wide selection of items covering first aid needs unique to the industry. They include products such as metal-detectable blue bandages in a variety of shapes, Cool&Soothe™ burn/blister relief dressing and blue finger cots.



1 Food Service First Aid Cabinet

- Color-coded and wall-mounted with tamper-evident, single-dose products
- Customizable to meet the needs of your business
- Includes burn products, metal-detectable, blue bandages in addition to the standard fill
- 4 Shelf (22" x 19" x 5.5") or 3 Shelf (16" x 19" x 5.5")

Part Numbers: 4 Shelf • 14339 3 Shelf • 13339

2 Visi-Blue™ Waterproof Metal Detectable Bandages

- Bright blue, highly visible
- Durable, stretchy, waterproof, flexible
- Non-stick island pads and metal detectable strips

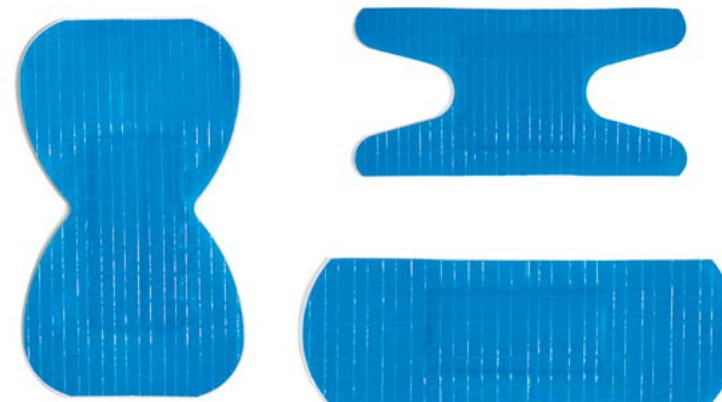
Part Numbers: Strip 1"x 3" • 32670 XL Fingertip • 32690 Knuckle • 32680

3 Blue Finger Cots

- USDA compliant blue coloring
- Beaded cuff, disposable, industrial grade

Part Number: 318200

For burn care items, go to page 30



2



3

Safety and PPE

When it comes to safety, being somewhat prepared isn't good enough. From hard hats and hearing protection to safety glasses and gloves, Cintas knows that you want to provide your employees with high-quality safety gear and that you want it to be available when they need it.

Cintas offers products from leading manufacturers as well as our own private labeled brand, The Safety Director®. With regularly scheduled visits, we'll help you keep your personal protective equipment inventoried, which helps save you time so you can focus on your business and employees.

TOP PRODUCTS INCLUDE:

PPE inventory management | 50

Hand protection | 52

Eye protection | 60

Hearing protection | 68

Respirators | 78

Apparel | 84

Head protection | 94

Fall protection and gas detection | 102

Bloodborne pathogen and spill control | 110

Batteries and flashlights | 114

Safety signage | 116

DISCLAIMER: Pursuant to OSHA regulations, 29 CFR 1910.132 (Subpart I), an employer bears sole responsibility for selecting the type(s) of personal protective equipment to be used by its employees. All purchasers of personal protective equipment from Cintas bear full responsibility for selecting the PPE appropriate for use by their employees. CINTAS EXPRESSLY DISCLAIMS ALL IMPLIED WARRANTIES INCLUDING AN IMPLIED WARRANTY OF MERCHANTABILITY OR FITNESS FOR PARTICULAR PURPOSE.

How the Service Works



DISCLAIMER: Pursuant to OSHA regulations, 29 CFR 1910.132 (Subpart I), an employer bears sole responsibility for selecting the type(s) of personal protective equipment to be used by its employees. All purchasers of personal protective equipment from Cintas bear full responsibility for selecting the PPE appropriate for use by their employees. CINTAS EXPRESSLY DISCLAIMS ALL IMPLIED WARRANTIES INCLUDING AN IMPLIED WARRANTY OF MERCHANTABILITY OR FITNESS FOR PARTICULAR PURPOSE.

PPE inventory management

Providing personal protective equipment (PPE) is an important step in preventing injuries. Ordering, stocking and keeping track of your PPE inventory can eat up precious time. Protecting your workforce with PPE inventory service allows you to take control of your PPE program and know your employees have the best PPE available to them.

Right size your safety inventory management with a Cintas Safety Center® or Safety Vending

No more scrambling to be sure you have the right resources for protection and safety. Your fully stocked Cintas Safety Center® includes everything you select for your business:

- Hand protection
- Eye protection
- Hearing protection
- Respiratory protection
- Protective apparel
- Head protection
- Fall protection
- Gas detection
- Bloodborne pathogen control
- Spill kits
- Electrolytes
- Skin protection



Safety Vending

- Touchscreen controller
- Reinforced steel cabinet
- Web-based user access and reporting
- Up to 70 SKUs
- Key-based manual override in case of power outage



Safety Center Premium

- Electronic keypad allows entry by access code or HID card
- Audit Trail available to track activity
- 14 Gauge Steel
- 6" Legs
- 3 Point Cast
- Locking Handle
- 4 Adjustable Shelves
- Acrylic Clear Window
- 36" x 24" x 78"

Part Number: 575384

Additional models available:

Safety Center Basic
Part Number: 575380



Safety Center Plus
Part Number: 575382

Hand protection

STATISTICS

- The average workplace hand injury costs \$6,000¹
- 70.9% of arm and hand injuries could have been prevented with PPE, specifically safety gloves²
- 70% of workers who experience hand injuries are not wearing gloves at the time of the incident³

OSHA 29 CFR 1910.138(A)

"General requirements. Employers shall select and require employees to use appropriate hand protection when employees' hands are exposed to hazards such as those from skin absorption of harmful substances; severe cuts or lacerations; severe abrasions; punctures; chemical burns; thermal burns; and harmful temperature extremes."

OSHA 29 CRR 1910.138(B)

"Selection. Employers shall base the selection of the appropriate hand protection on an evaluation of the performance characteristics of the hand protection relative to the task(s) to be performed, conditions present, duration of use and the hazards and potential hazards identified."

GLOVE TYPES

- General Purpose
- Coated
- Cut-Resistant
- Disposable
- Cut-Resistant Sleeves
- Leather
- String Knit
- Cotton Knit
- Dyneema®
- HPPE
- Kevlar®
- Impact Resistant

TRAINING & COMPLIANCE COURSES — PAGE 152

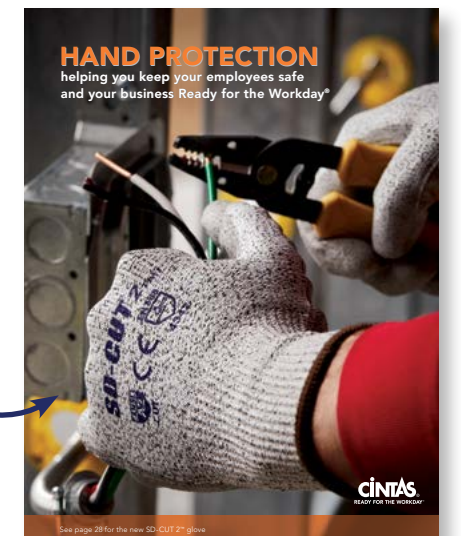
- Personal Protective Equipment (PPE)
- Arc Flash Safety

Hand protection

Personal protective equipment (PPE) is your first line of defense in preventing injuries. Much more than just an accessory or afterthought, the right gloves keep your employees' hands protected, allowing them to focus on work and return home safe at the end of every workday.

For our comprehensive guide of available gloves, ask your rep for our hand protection catalog

¹ U.S. Department of Labor: Bureau of Labor Statistics. *Workplace Injuries and Illnesses and Employer Costs for Workers' Compensation*. Last updated October 2016. Accessed March 3, 2019.
² Lydia Baugh Feb 01, 2020. "A New Year of Hand Safety." Web. 08 Mar. 2021.
³ "Hand Injury Statistics." Superior Glove. Web. 08 Mar. 2021.)



Hand protection

For our full line of gloves, ask your Cintas representative for our hand protection catalog.

COATED



1 SD-TEC™, Nitrile-Coated

XS • 76578 S • 76579
M • 76580 L • 76581
XL • 76582 XXL • 76583



2 MaxiFlex® Ultimate™

XS • 1732500 S • 1732510
M • 1732520 L • 1732530
XL • 1732540 XXL • 1732550
XXXL • 572044



3 SD-GRIP®, Crinkle Latex-Coated

S • 1719250 M • 1719260
L • 1719270 XL • 1719280

LEATHER



4 PIP® Cowhide Driver, Straight Thumb

S • 1670710 M • 1670720
L • 1670730 XL • 1670740
XXL • 1670750



5 Leather Palm, Economy Grade

L • 1670230



6 Double Leather Palm, Split Cowhide

S • 576490 M • 576491
L • 1670430 XL • 1670440

STRING KNIT



7 PIP® Seamless Cotton/Poly, Grey

S • 1722210 M • 1722220
L • 1722230 XL • 1722240



8 PIP® Seamless Cotton/Poly, Natural

XS • 1671200 S • 1671210
M • 1671220 L • 1671230



9 String Knit Medium-Weight, Black Dotted

S • 1685810 L • 1685830

COTTON KNIT



10 PIP® Brown Jersey Glove, Regular Weight

S • 1671010 L • 1708230



11 PIP® Cotton Canvas, Economy Grade

L • 1671130



12 Cotton Inspection Glove, Light Weight

S • 1696810 L • 1677230

DYNEEMA®



13 UltraTech® Dyneema®

XS • 8303274 S • 1733560
M • 1733570 L • 1733580
XL • 1733590 XXL • 8301246



14 G-Tek® 3GX™, Nitrile-Coated

S • 1791010 M • 1745620
L • 1745630 XL • 1791040



15 Great White® 3GX™

XS • 1745100 S • 1745110
M • 1745120 L • 1745130
XL • 1745140 XXL • 1745150

HPPE



16 SD-CUT 2™, PU-Coated

S • 609153S M • 609153M
L • 609153L XL • 609153XL1
XXL • 609153XL2



17 MaxiFlex® Cut™

XS • 583613 S • 583614
M • 583615 L • 583616
XL • 583617 XXL • 583618
XXXL • 593124



18 Cut-less Watchdog® Seamless Knit

S • 593095 M • 593096
L • 592964 XL • 593097
XXL • 596911

Hand protection

For our full line of gloves, ask your Cintas representative for our hand protection catalog.

KEVLAR®



19 G-Tek® KEV™, PU-Coated

S • 574202 M • 574203
L • 574204 XL • 574205
XXL • 574206



20 G-Tek® KEV™, Nitrile-Coated

XS • 1738900 S • 1738910
M • 1738920 L • 1738930
XL • 1738940 XXL • 1738950



21 FlexTuff® Kevlar

S • 8303290 M • 8301249
L • 8301248 XL • 8309794
XXL • 70199

IMPACT PROTECTION



22 The Safety Director® FastFit™

M • MXSDF08009 L • MXSDF08010
XL • MXSDF08011



23 The Original®

M • 2290120 L • 2290130
XL • 2290140



24 M-PACT®

S • 77606 M • 8308213
L • 8308214 XL • 8308215
XXL • 8308216

SLEEVES



25 Kut-Gard®

18" • 1745997 16" • 1745996
14" • 1745995



26 Kevlar® Sleeve with Thumb Slot

18" • 1733550 14" • 8301229
12" • 1726234



27 Kut-Gard® Kevlar® Sleeve

18" • 1726630 14" • 1726330
12" • 1726230

DISPOSABLES



28



29



30



31



32

28 The Safety Director® Orange Nitrile, Premium 8 mil

Part Numbers: M • 604902 L • 604903 XL • 604904 XXL • 605723

29 The Safety Director® Black Nitrile, 4.5 mil

Part Numbers: S • 571750 M • 571751 L • 571752 XL • 571753 XXL • 571754

30 The Safety Director® Blue Nitrile, 3 mil

Part Numbers: S • 71152 M • 71153 L • 71154 XL • 71155

31 The Safety Director® Latex, 3.5 mil

Part Numbers: S • 71156 M • 71157 L • 71158 XL • 71159

32 The Safety Director® Vinyl, 3 mil

Part Numbers: S • 71160 M • 71161 L • 71162 XL • 71163



The Safety Director® is our own private-labeled brand. The Safety Director® products are always high-quality, industrial grade and competitively priced. You will find our many The Safety Director® products throughout this guide, in nearly every category. We are constantly adding new The Safety Director® products to bring you the best of the best.

Electrical safety and arc flash

Ask your Cintas representative about our arc flash hazard risk assessments and NFPA 70E(r) arc flash training.



1



2



3

1 Novax® Electrical Safety Kit

- 1 pair ESP gloves in black or orange, class 00 or 0 (150-00-11)
- 1 pair goatskin leather protectors (148-1000)
- 11" nylon glove bag (148-2136)

Part Numbers:	Class 00, Black:	8 • 1735710	9 • 1735720	10 • 1735730	11 • 1735740	12 • 1735750
	Class 00, Orange:	8 • 1734180	9 • 1734190	10 • 1734160	11 • 1734170	12 • 606403
	Class 0, Black:	8 • 1735610	9 • 1735620	10 • 1735630	11 • 1735640	12 • 1735650
	Class 0, Orange:	8 • 1734220	9 • 1734230	10 • 1734200	11 • 1734210	12 • 1734850

2 Novax® Rubber Insulated Gloves

- 11" or 14", unlined, smooth finish
- Individual serial numbers
- Meets ANSI/ASTM D120

Part Numbers:	Class 00, 11" Black:	8 • 1735210	9 • 1735220	10 • 1735230	11 • 1735240	12 • 1735250
	Class 00, 11" Orange:	8 • 1734020	9 • 1734030	10 • 1734000	11 • 1734010	12 • 1734450
	Class 0, 11" Black:	8 • 1735310	9 • 1735320	10 • 1735330	11 • 1735340	12 • 1735350
	Class 0, 11" Orange:	8 • 1734060	9 • 1734070	10 • 1734040	11 • 1734050	12 • 606350
	Class 1, 14" Black:	8 • 1735410	9 • 1735420	10 • 1735430	11 • 1735440	12 • 1735450
	Class 1, 14" Orange:	8 • 1734100	9 • 1734110	10 • 1734080	11 • 1734090	
	Class 2, Black:	8 • 1735510	9 • 1735520	10 • 1735530	11 • 1735540	12 • 1735550
	Class 2, Orange:	8 • 1734140	9 • 1734150	10 • 1734120	11 • 1734130	12 • 1734750

3 Double-Insulated Tool Kit with Case

- Includes: lineman pliers, diagonal cutting pliers, needle-nose pliers and 5 cushion-grip screwdrivers
- Tested to 10,000 VAC and rated for 1,000 VAC when working on live parts
- Complies with IEC900, ASTM F1505-01, CSA-Z462, OSHA and NFPA 70E

Part Number: 3700020



4



5



6

4 Level 2 Arc Flash Kit

- Includes: Level 2 garment, 11" Class 0 rubber insulating gloves, 10" leather glove protectors, hard hat with faceshield and chin cup, safety glasses, faceshield unit bag, glove bag, gear bag
- Special order item
- Different garment options are available

Part Number: 12 cal/cm² • 3700002

5 Level 2 Head Protection Kit

- Includes: Faceshield unit and hard hat, Indura Ultra Soft® balaclava, faceshield bag, safety glasses
- Special order item
- Industrial grade

Part Numbers: 10 cal/cm² • 3700010 12 cal/cm² • 575603 12 cal/cm² PureView™ • 3700012

6 Level 4 Arc Flash Kit

- Includes: Level 4 garment, 14" Class 2 rubber insulating gloves, 12" leather glove protectors, hard hat with faceshield and chin cup, safety glasses, faceshield unit bag, glove bag, gear bag
- Special order item
- Different garment options are available

Part Number: 40 cal/cm² • 3700004

As the largest provider of managed flame resistant clothing (FRC) programs, Cintas offers FRC products from manufacturers who engineer them to be more durable, more comfortable and lighter than any other garments of their type. We also offer the gloves and head protection often required by NFPA 70E in a convenient rental program. For more information on how Cintas can be your one stop shop for your NFPA 70E PPE needs, please visit www.cintas.com/FRC

Eye protection

STATISTICS

- Every year, nearly 800,000 Americans suffer from an eye injury in the workplace¹
- More than 10% of work-related eye injuries result in permanent vision loss²
- 3 out of 5 eye injuries happen to people who are not wearing eye protection³
- Safety experts and eye doctors believe that correct eye protection can lessen the severity of or even prevent 90% of eye injuries⁴

OSHA 29 CFR 1910.133(A)(1)

"The employer shall ensure that each affected employee uses appropriate eye or face protection when exposed to eye or face hazards from flying particles, molten metal, liquid chemicals, acids or caustic liquids, chemical gases or vapors, or potentially injurious light radiation."

OSHA 29 CFR 1910.133(A)(2)

"The employer shall ensure that each affected employee uses eye protection that provides side protection when there is a hazard from flying objects. Detachable side protectors (e.g. clip-on or slide-on side shields) meeting the pertinent requirements of this section are acceptable."

OSHA 29 CFR 1910.133(A)(3)

"The employer shall ensure that each affected employee who wears prescription lenses while engaged in operations that involve eye hazards wears eye protection that incorporates the prescription in its design, or wears eye protection that can be worn over the prescription lenses without disturbing the proper position of the prescription lenses or the protective lenses."

OSHA 29 CFR 1910.133(A)(4)

"Eye and face PPE shall be distinctly marked to facilitate identification of the manufacturer."

OSHA 29 CFR 1910.133(A)(5)

"The employer shall ensure that each affected employee uses equipment with filter lenses that have a shade number appropriate for the work being performed for protection from injurious light radiation."

ANSI/ISEA Z87.1-2015

This standard sets forth criteria related to the general requirements, testing, permanent marking, selection, care, and use of protectors to minimize the occurrence and severity or prevention of injuries from such hazards as impact, non-ionizing radiation and liquid splash exposures in occupational and educational environments including, but not limited to, machinery operations, material welding and cutting, chemical handling and assembly operations.

TRAINING & COMPLIANCE COURSES — PAGE 152

- Eye Protection
- Personal Protective Equipment (PPE)

¹ "800,000 Eye Injuries Occur Annually, 90% Are Preventable." StackPath. Web. 08 Mar. 2021.

² Mehta, Benita. "10-20 Percent of Work-related Eye Injuries Result in Temporary or Permanent Vision Loss." ISHN RSS. ISHN, 27 Aug. 2015. Web. 08 Mar. 2021.

³ "Eye Protection." Safety+Health Magazine. Safety+Health Magazine, 25 June 2015. Web. 08 Mar. 2021.

⁴ "March Is Workplace Eye Health and Safety Month!" Eye Care Specialists. 28 Mar. 2016. Web. 08 Mar. 2021.

Eye protection

Customers choose us because we offer a wide variety of industry specific eye protection to help ensure employees have the proper coverage for the job. Help support your eye protection safety goals with The Safety Director® branded eye protection products as well as styles from the leading manufacturers. With Cintas, you can always find what you need to protect your employees.

Eye protection



1 The Safety Director® Fog Blaster™ (Meets or exceeds ANSI Z87.1+)

- 6X fog protection
- 5-point ratchet template
- Comfortable TPR nose piece

Part Numbers: Clear • 592287 Grey • 592288

2 The Safety Director® Apache® (Meets or exceeds ANSI Z87.1+)

- Lightweight frame for extended wear with padded spatula temples for added comfort
- Universal nose bridge accommodates a variety of wearers
- Optional company logo: ask your Cintas representative for details

Part Numbers: Clear • CRSD110 Grey • CRSD112 IO Mirror • CRSD119 Light Blue • CRSD113
Clear AF • CRSD110AF Grey AF • CRSD112AF Amber • CRSD114 Blue Mirror • CRSD118

3 The Safety Director® Apache® Reader (Meets or exceeds ANSI Z87.1+)

- Lightweight frame for extended wear with padded spatula temples for added comfort
- Features a range of bifocal magnifying lens options
- Universal nose bridge accommodates a variety of wearers

Part Numbers: Clear +1.5 • CRSDH15 Clear +2.0 • CRSDH20 Clear +2.5 • CRSDH25

4 The Safety Director® Vizicor™ (Meets or exceeds ANSI Z87.1+)

- Adjustable temples
- 99.9% UV protection
- Prescription program available

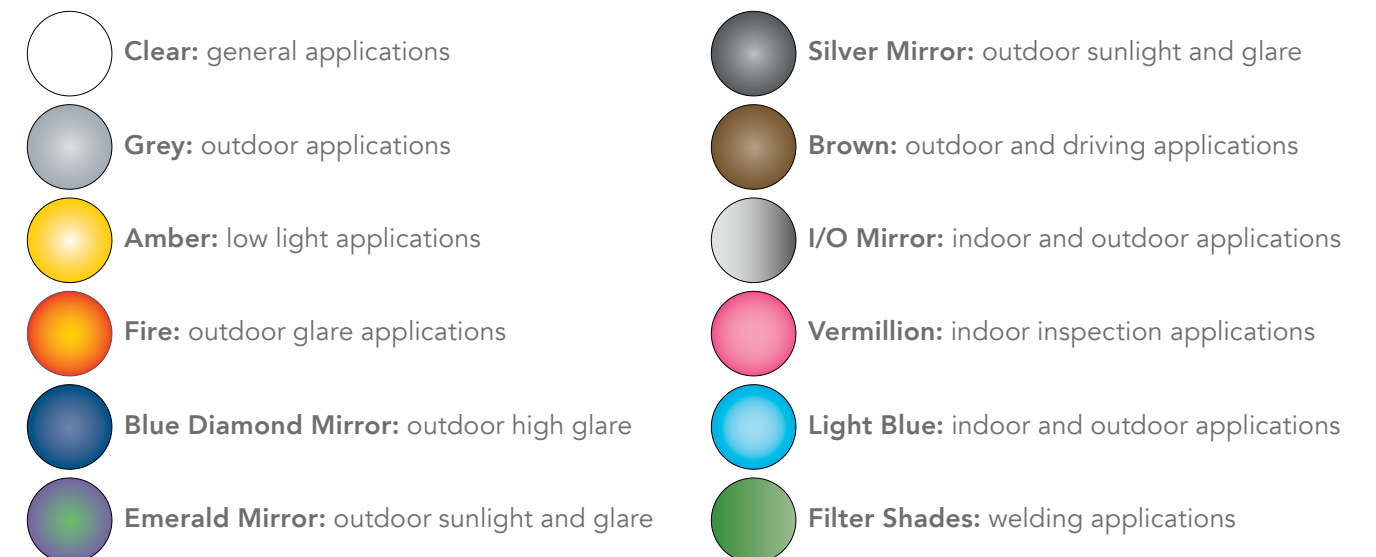
Part Numbers: Clear • CRSD310 Grey • CRSD312 Clear AF • CRSD310AF

5 The Safety Director® Visitor Specs Classic and Visitor Specs Lite (Meets or exceeds ANSI Z87.1+)

- Lightweight, universal fit fits over most prescription eyewear
- Wraparound polycarbonate lenses
- Packaging works as a convenient, wall-mountable dispenser

Part Numbers: Classic 12 Count Box • CR9800SD Lite 12 Count Box • CRCL010SD

LENS TINTS



Eye protection



1



2



3



4



5



6

1 PIP Commander Anti-Fog (Meets or exceeds ANSI Z87.1+)

- Lightweight, semi-rimless design offers extensive eye coverage
- Bayonet style temples with non-slip rubber pads provide a secure fit
- Anti-Fog lens coating as standard

Part Numbers: Clear • 584035 I/O • 592039 Grey • 601225

2 PIP Pulse (Meets or exceeds ANSI Z87.1+)

- Universal fit nose bridge design with nose pads
- Lightweight, rimless design provide all day comfort
- Available with anti-fog

Part Numbers: Clear • 601217 Clear AF • 601218 I/O AF • 601238 Grey • 601237

3 PIP Anser™ (Meets or exceeds ANSI Z87.1+)

- Sleek, sporty style with wraparound lens protection
- Compare to KLEENGUARD™ NEMESIS™
- Available with FogLess® 3Sixty™ coating

Part Numbers: Clear • 564125 Grey • 563533 I/O • 564126 Clear AF • 564120
Clear FogLess® 3Sixty™ • 609242

4 Fuselage™ (Meets or exceeds ANSI Z87.1+)

- 99.9% UV protection, anti-fog, scratch-resistant lens coating
- Protection from dust and debris
- Easily converts into a tight-sealing goggle with flame-resistant foam padding that forms a seal

Part Numbers: Clear • 2990410 Grey • 2990430

5 PIP Zenon Z28 OTG (Meets or exceeds ANSI Z87.1+)

- Can also be worn over prescription eyeglasses or by itself as a regular safety glass
- Rimless frame design ensures an unobstructed view
- Anti-scratch coating

Part Number: Clear • 562914

6 OTS by Pyramex (Meets or exceeds ANSI Z87.1+)

- Low-profile design fit for a wearer of smaller prescription eyewear
- Lightweight nylon temples adjust for length and pitch
- 99.9% UV protection lens coated for superior scratch resistance

Part Number: Clear • PYS3510SJ

Ask your Cintas representative about our prescription safety glasses program

Eye protection



1



2



3



4



6



7



8

Goggles

1 Chemical Splash Goggles (Meets or exceeds ANSI Z87.1+)

- Indirect ventilation offers comfort and air flow
- High-quality, economical
- Industrial grade

Part Number: CR2230R

2 PIP Stone Goggles and Faceshield (Meets or exceeds ANSI Z87.1+)

- Clear polycarbonate lens with anti-scratch, anti-fog coating and high-impact protection
- Adjustable elastic strap provides a comfortable fit
- Optional ANSI rated polycarbonate visor can be attached/removed

Part Numbers: Goggles • 594118 Faceshield • 597829

3 PIP Reaction Premium Double Lens Goggle (Meets or exceeds ANSI Z87.1+)

- Double lens technology prevents fogging
- 99.99% UVA and UVB light filtration
- Indirect ventilation protects against liquid splash

Part Number: Clear with Elastic • 593946

Accessories

4 The Safety Director® Lens Wipes

Part Numbers: 100 Count • 280020 36 Count • 280000

5 The Safety Director® Sideshields

Part Number: 1 Pair • 281050

6 Safety Glass Cords

Part Numbers: Black Snakeskin • CR215 Black • 281040

7 The Safety Director® Disposable Lens Cleaning Station

- Includes lens wipes

Part Number: 1408090



Hearing protection

You want to build a hearing conservation program that helps prevent initial occupational hearing loss, helps preserve and protect remaining hearing and helps equip workers with the protection necessary to safeguard themselves. With Cintas, you can give your employees the opportunity to select their hearing protection from a wide selection of top-tier, industry-leading products.

Hearing protection

STATISTICS

- Last year, U.S. businesses paid more than \$1.5 million in penalties for not protecting workers from noise¹
- An estimated \$242 million is spent annually on workers' compensation for hearing loss disability²
- 22 million workers are exposed to potentially damaging noise at work each year³

WHAT IS NOISE REDUCTION RATING (NRR)?

Noise Reduction Rating (NRR) is the measurement — in decibels — of how well hearing protection equipment reduces noise, as specified by the Environmental Protection Agency. The higher the number, the greater the noise reduction.**

WHAT ARE DECIBELS (dB)?

Decibels (dB) are the measurement of intensity of sound. The scale runs from the faintest sound the human ear can detect — labeled 0 dB - to over 180 dB, the noise at a rocket pad during launch. Decibels are measured logarithmically: as decibel intensity increases by units of 10, each increase is 10 times the lower figure.***

WHAT IS OSHA STANDARD 29 CFR 1910.95****?

"The hearing conservation program requires employers to monitor noise exposure levels in a way that accurately identifies employees exposed to noise at or above 85 decibels (dB) averaged over 8 working hours, or an 8-hour time-weighted average (TWA)... Employers must provide hearing protectors to all workers exposed to 8-hour TWA noise levels of 85 dB or above. This requirement ensures that employees have access to protectors before they experience any hearing loss. Employees must wear hearing protectors:

- *For any period exceeding 6 months from the time they are first exposed to 8-hour TWA noise levels of 85 dB or above, until they receive their baseline audiograms if these tests are delayed due to mobile test van scheduling;*
- *If they have incurred standard threshold shifts that demonstrate they are susceptible to noise; and*
- *If they are exposed to noise over the permissible exposure limit of 90 dB over an 8-hour TWA."*

EAR PLUG TYPES

- Disposable
- Reusable
- Banded
- Metal-detectable

For our comprehensive guide of available hearing protection products, ask your rep for our hearing protection catalog



TRAINING & COMPLIANCE COURSES — PAGE 152

- Hearing Protection
- Hearing and Fit Testing
- Personal Protective Equipment (PPE)
- Examinetics

¹ "OSHA Limits on Workplace Noise Feed Complaints." StackPath. Web. 08 Mar. 2021.

² Walla, Rachel, and Rachel Walla. "Improving Hearing Loss Prevention." Listen Technologies. 01 Apr. 2020. Web. 08 Mar. 2021.

³ "Noise and Hearing Loss Prevention." Centers for Disease Control and Prevention. Centers for Disease Control and Prevention, 06 Feb. 2018. Web. 08 Mar. 2021.

Ear plugs – disposable



1 The Safety Director® Comfort Plus®

- NRR: 32 dB
 - Low pressure, foam, multi-colored, comfortable, great for extended wear
 - Molded, smooth outer surface for outstanding hygiene and comfort
- Part Numbers:** Uncorded (200 pairs) • 290030 Corded (100 pairs) • 290040

2 The Safety Director® Comfort Fit™

- NRR: 33 dB
 - Tapered foam design provides better protection, superior fit and easy insertion
 - Molded, smooth outer surface for outstanding hygiene and comfort
- Part Numbers:** Uncorded (200 pairs) • 290010 Corded (100 pairs) • 290020

3 Moldex® Soothers™

- NRR: 33 dB
 - Hydrates and moisturizes for all day comfort.
 - Soft foam and tapered shape for added comfort
- Part Number:** Uncorded (200 pairs) • 615167

4 Moldex® SparkPlugs® PlugStation®

- NRR: 33 dB
 - Easy access, high visibility dispenser increases awareness for your hearing conservation program
 - Click mechanism ensures earplugs drop right into the palm of your hand
 - Earplugs fit snugly to gently seal the ear canal
- Part Numbers:** 250 Pairs • 293220 500 Pairs • 293230 Magnetic Bracket for PlugStation® • 615168

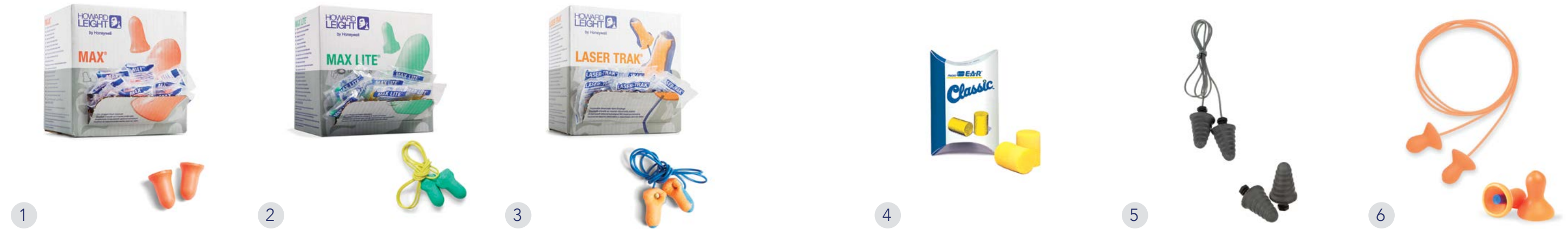
5 Moldex® SparkPlugs®

- NRR: 33 dB
 - Extra-soft, low-pressure foam for comfort and fit
 - Shaped to fit even very small ear canals
 - Also available in metal detectable
- Part Numbers:** Uncorded (200 pairs) • 293210 Corded (100 pairs) • 293200
Metal Detectable Corded (100 pairs) • 8301293

6 Moldex® Meteors®

- NRR: 33 dB
 - Soft, slow recovery foam and contoured shape molds easily to the ear canal for all day comfort
 - Contour shape means less pressure at the smallest diameter of the ear canal
- Part Numbers:** Uncorded (200 pairs) • 8301295 Corded (100 pairs) • 8303522

Ear plugs – disposable/no-roll foam/reusable



1 Honeywell Howard Leight™ Max®

- NRR: 33 dB
- Offers highest NRR rating available in a pre-shaped foam earplug
- Smooth, soil-resistant outer skin for optimum user comfort and safety

Part Numbers: Uncorded (200 pairs) • 292020 Corded (100 pairs) • 292000

2 Honeywell Howard Leight™ Max Lite®

- NRR: 30 dB
- Comfortable for virtually all ear canals and in all-day use environments
- Low pressure foam protects for many industrial environments

Part Numbers: Uncorded (200 pairs) • 292120 Corded (100 pairs) • 292100

3 Honeywell Howard Leight™ Laser Trak® Metal Detectable

- NRR: 33 dB
- Comfortable styling, high attenuation, highly-detectable metal, easy disposability
- Bright orange and blue provides extra visibility in food processing environments
- Corded for extra safety and convenience

Part Number: Metal Detectable Corded (100 pairs) • 292250

4 3M™ E-A-R Classic®

- NRR: 29 dB (Metal Detectable plug has a NRR of 33 dB)
- Bright yellow, cylindrical polymer foam can be easily rolled and inserted to fit almost any ear canal
- Also available in 33dB metal detectable

Part Numbers: Uncorded (200 pairs) • 291200 Corded (100 pairs) • 291210
Metal Detectable Corded (100 pairs) • 29123

5 3M™ E-A-R™ Skull Screws™

- NRR: 32 dB
- Paddle-style grips provide quick, clean, and consistent placement of earplugs
- Slow recovery foam easily goes into ear canal and then seats and stays in place

Part Numbers: Uncorded (120 pairs) • 8301539 Corded (120 pairs) • 8300850

6 Honeywell Howard Leight™ Quiet® Reusable

- NRR: 26 dB
- Patented "no-roll" design is easy to handle and fit
- Built-in insertion stem makes insertion quick and easy

Part Numbers: Uncorded (100 pairs) • 292400 Corded (100 pairs) • 292410

Ear plugs – pods and reusable



1 Moldex® Glide®

- NRR: 30 dB
- Unique multi-curved stem rotates for a custom fit
- Large handle on curved stem for easy insertion & removal
- No roll down design is perfect for workers with dirty hands or wearing gloves

Part Number: Corded (100 pairs) • 567094

2 3M™ E-A-R™ EXPRESS™ Pod Plugs™

- NRR: 25 dB (*Metal Detectable plug has a NRR of 26 dB*)
- Paddle-style grips provide quick, clean, and consistent placement of earplugs
- Also available in metal detectable

Part Numbers: Uncorded (100 pairs) • 8301591 Corded (100 pairs) • 8312608
Metal Detectable Corded (100 pairs) • 8301566

3 3M™ E-A-R™ Push-Ins™

- NRR: 28 dB
- Blue stem makes insertion and removal cleaner and easier
- All-day hearing comfort, convenience and protection

Part Numbers: Uncorded (100 pairs) • 8301492 Corded (100 pairs) • 29180

4 3M™ E-A-R™ UltraFit™

- NRR: 25 dB
- Soft polymer is washable and reusable, reducing both waste and costs
- Pre-molded, triple flange earplugs fit comfortably in a wide range of ear sizes

Part Numbers: Uncorded (100 pairs) • 8301574 Corded (100 pairs) • 291330



5 The Safety Director® DuraPlug™

- NRR: 27 dB
- Excellent reusable plugs in economical 25-count dispenser
- Tapered design, soft attenuating shell around a pocket of air for comfort

Part Number: Corded (25 pairs) • 290070

6 Moldex® Rockets Reusable

- NRR: 27 dB
- Easy grip, comfortable design
- Also available in metal detectable

Part Numbers: Uncorded (50 pairs) • 293610 Corded (50 pairs) • 293600

7 Honeywell Howard Leight™ AirSoft®

- NRR: 27 dB
- Advanced air pocket design features internal noise-blocking fins
- Rounded flanges, tapered shape fits better in the ear canal

Part Number: Corded (100 pairs) • 292330

8 Honeywell Howard Leight™ Fusion®

- NRR: 27 dB
- FlexiFirm stem is easy to grasp, ensures easy insertion into the ear canal
- Cleans with soap and water, lasts for multiple days
- Also available in metal detectable

Part Numbers: Corded (100 pairs) • 292710 *Metal Detectable Corded (100 pairs) • 75401*

9 Honeywell Howard Leight™ SmartFit® Metal Detectable

- NRR: 25 dB
- Long-wearing comfort, reusable, high level of safety
- Metal detectable

Part Number: *Metal Detectable Corded (100 pairs) • 292260*

Banded earplugs and earmuffs



1 Moldex® Jazz Band®

- NRR: 25 dB
- Low band pressure with extra soft tapered foam pods, ideal for intermittent usage

Part Numbers: Jazz Band with pods • 576782 Replacement Kit (5 pairs of pods) • 8305103

2 Honeywell Howard Leight™ QB2®

- NRR 25 dB
- Lightweight, comfortable and reusable
- Sold by the pair or refill pod packs of 50

Part Numbers: QB2 Band with pods • 292500 Refill Pods (50 pairs of pods) • 292510

3 MSA Economuffs

- NRR: 24 dBA (worn over the head) or 23 dBA (worn under chin/behind head)
- Under the chin or behind the head positions allow use of head protection

Part Number: 8301239

4 Honeywell Howard Leight™ QM24+®

- NRR: 25 dB
- Ultra lightweight design
- Dielectric construction suitable for electrical environments

Part Number: 292630

5 Honeywell Howard Leight™ VeriShield™ VS130

- NRR: 30 dB
- Superior hearing protection in a lightweight design
- Memory Foam on Cushions dissipates resistance/relief in headband force

Part Number: 615826

6 JSP Surefit™ Contour Cap Mounted Earmuff — PAIR

- NRR: 21 dB
- Fits universal accessory slot
- Durable polystyrene ear cups pivot and slide for a secure seal

Part Number: 575098

7 MSA V-Gard Cap-Mounted Ear Muff

- NRR: 27 dBA
- Designed specifically for very high noise levels in places like airfields or power plants
- Highest-rated protection available for low-frequency environments
- Three distinct wearing positions
- Provides the highest attenuation available for a cap-mounted muff

Part Number: 29401

8 MSA Sound Control SH - PAIR

- NRR 25: dBA
- Use with MSA slotted full brim helmet (also compatible with many other full brim hats)
- Easy ear cup height adjustment and spring design offers low pressure and a high level of comfort
- Retain the Class E dielectric rating on the V-Gard Full Brim Hard Hat

Part Number: 571309



Respirators

Having the right respirator can be a critical component of your safety program. With a disposable cartridge or mask for most applications, respirators help protect workers from harmful dusts, fogs, smokes, mists, gases and vapors. These hazards can potentially cause cancer, lung impairment, disease or even death. We sell and service a variety of products, including the Cintas-branded The Safety Director® line, that can help you and your employees feel confident when working in hazardous environments.

Respirators

STATISTICS

- An estimated 5 million workers are required to wear respirators in 1.3 million workplaces throughout the United States¹
- Compliance with the OSHA Respiratory Protection Standard could avert hundreds of deaths and thousands of illnesses annually²

OSHA 29 CFR 1910.134(A)(1)

"In the control of those occupational diseases caused by breathing air contaminated with harmful dusts, fogs, fumes, mists, gases, smokes, sprays, or vapors, the primary objective shall be to prevent atmospheric contamination. This shall be accomplished as far as feasible by accepted engineering control measures (for example, enclosure or confinement of the operation, general and local ventilation, and substitution of less toxic materials). When effective engineering controls are not feasible, or while they are being instituted, appropriate respirators shall be used pursuant to this section."

OSHA 29 CFR 1910.134(A)(2)

"A respirator shall be provided to each employee when such equipment is necessary to protect the health of such employee. The employer shall provide the respirators which are applicable and suitable for the purpose intended. The employer shall be responsible for the establishment and maintenance of a respiratory protection program, which shall include the requirements outlined in paragraph (c) of this section. The program shall cover each employee required by this section to use a respirator."

REUSABLE RESPIRATOR TYPES

- Full Face: protects the face as well as the eyes. Filters out contaminants with the help of cartridges or filters. Commonly used in agriculture, construction, general manufacturing, pharmaceuticals and primary metals industries.
- Half Mask: protects the nose and mouth. Filters out contaminants with the help of cartridges or filters. Commonly used to protect against dust and paint fumes.

DISPOSABLE RESPIRATOR TYPES

- N95-Particulate Filter (95% filter efficiency level): Effective against particulate aerosols free of oil; time use restrictions apply**
- R95-Particulate Filter (95% filter efficiency level): Effective against particulate aerosols; time use restrictions may apply**
- P100-Particulate Filter (99.97% filter efficiency): Effective against particulate aerosols; time restrictions may apply**

TRAINING & COMPLIANCE COURSES — PAGE 152

- Respiratory Protection and Fit Testing
- Personal Protective Equipment (PPE)
- Hazard Communications
- Air Sample Testing

¹ "Agile Safety — Respiratory Protection." Agile Safety — Respiratory Protection. Web. 08 Mar. 2021.
² "Department of Labor Logo UNITED STATES DEPARTMENT OF LABOR." Respiratory Protection — Overview | Occupational Safety and Health Administration. Web. 08 Mar. 2021.

Disposable respirators



1 The Safety Director® Nuisance Dust Mask

- Lightweight mask protects against non-toxic, nuisance dusts
- Used for comfort only, does not provide respiratory protection
- Heavy duty single elastic strap and adjustable nosepiece for comfort

Part Number: 50 Count Box • 305040

2 The Safety Director® N95 Particulate Mask

- Provides basic respiratory protection from particulates free of oil
- Adjustable contoured nosepiece and soft open cell foam nose cushion
- Valve option provides easy-breathing exhalation and increases airflow for improved comfort

Part Numbers: 20 Count Box • 305050 10 Count Box w/ Valve • 305060

3 Moldex® AirWave® N95

- Patent-pending AirWave technology allows easier breathing for cool comfort
- Comfortable and durable
- Provides all-day protection

Part Numbers: S • 75329 M/L • 75328

4 Moldex® N95 Particulate Mask

- Meets OSHA guidelines for use up to 10 x PEL
- Sturdy Dura-Mesh® shell resists collapsing in heat and humidity
- NIOSH certified to have a filter efficiency level of 95% or greater against particulate aerosols free of oil

Part Numbers: 20 Count Box • 300200 10 Count Box w/ Valve • 300220

5 Moldex® AirWave® P95 Particulate Mask

- Easy-breathing wave design
- 95% efficient against oil and non-oil based particulates
- Meets heat and flame resistance in accordance with ANSI/ISEA 110-2003 7.11.1

Part Number: 8 Count Box • 606094

6 Moldex® AirWave® N100 Disposable Mask

- 99.97% effective against non-oil based particulates
- HandyStrap® allows mask to conveniently hang around neck when not in use
- Valve lets hot air out faster for easy breathing

Part Numbers: S • 8303512 M/L • 8303511

7 Moldex® N95 Nuisance OV Mask

- Added carbon layer helps filter out nuisance levels of ozone and organic vapors (less than OSHA PEL)
- Can be used against most welding fumes (free of oil)
- Valve lets hot air out faster for easy-breathing

Part Number: 10 Count Box • 300280

Reusable respirators

Ask your Cintas representative for additional reusable respirator options



1



2



3

1 Dentec® Full Face Mask

- Anti-scratch, anti-fog, impact resistant, polycarbonates lens
- Metal speech diaphragm allows for communication
- 5-point quick release buckles
- Special compression silicon
- Universal fit, one size fits most

Part Number: 130 Series • 611303

2 Dentec® Half Mask 100 Series and 300 Series

- 100 series is pure silicone, comfortable, quickest to clean up, durable, low profile
- 300 series is a thermoplastic blend, provides economy with function, low profile, comfortable
- Features extra large inhalation valves, multi-position cartridge attachment, deep chin cup and swivel retainers

Part Numbers: 100 Series: S • 611300 M • 611299 L • 611298
300 Series: S/M • 611302 M/L • 611301

3 Dentec® Cartridges & Filters

- Fit Dentec Full Face and Half Mask respirators

Part Numbers: P100 Disk Cartridge (10 pair) • 611305
P100 Disk with Nuisance Level OV Protection (10 pair) • 611306
P100 Organic Vapor Cartridge (2 pair) • 611307
R95 Organic Vapor Cartridge (1 pair) • 611309
Organic Vapor Cartridge (3 pair) • 611311
Multi Gas/Vapor (3 pair) • 611312
Ammonia/Methane (3 pair) • 611314
Acid Gas/Organic Vapor (3 pair) • 611315



4



5



6

4 MSA 3200 Full Face Mask

- Advantage® Respirators
- Advantage® Twin-Port Facepiece features a wraparound optically-correct, scratch-resistant coating lens
- Soft, pliable silicone facepiece and rubber head-harness with pre-adjustable straps
- Uses Advantage® bayonet-style cartridges

Part Numbers: S • 8303615 M • 30656 L • 8303614
Clear Mylar® Cover Lens, 25/box • 306530

5 MSA 200LS Half-Mask

- Advantage® Respirators
- Patented MultiFlex® System in a lightweight, softer, more pliable combination of rubber and plastic
- Added stability so facepiece won't collapse
- Improved comfort of AntroCurve™ Sealing Surface reduces pressure points

Part Numbers: S • 306000 M • 306010 L • 306020

6 MSA Cartridges & Filters

- Fit MSA 200LS, 420 and 3200 respirators

Part Numbers: Organic Vapor • 306070 Organic Vapor P100 • 306080 Organic Vapor/Acid Gas • 306090
Organic Vapor/Acid Gas P100 • 306120 Organic Vapor/Acid Gas/Amm. • 306110
Organic Vapor/Acid Gas/Amm. P100 • 306100 Flexi-Filter P100 • 30613
Low Profile P100 • 8309273

ASK ABOUT
OUR LOGO
PROGRAM



Apparel

From parking attendants to roadway construction crews, many workers face hazards on and off the road performing tasks as varied as the hazards themselves. Safety vests and other high-visibility safety garments help keep your workers visible, whether it's day, night or low light.

Apparel

STATISTICS

- More than 40,000 people are injured each year as a result of motor vehicle crashes in work zones¹

HIGH VISIBILITY PRODUCT ANSI STANDARD 107-2015

ANSI/ISEA 107-2015 is the American National Standard for High-Visibility Safety Apparel and Accessories. It is a voluntary consensus standard developed by the International Safety Equipment Association (ISEA) and approved by the American National Standards Institute (ANSI). Like the previous editions of ANSI/ISEA 107, the standard classifies High-Visibility Safety Apparel (HVSA) as Performance Class 1, 2 or 3, depending on the amount of visible background and retroreflective material. These Performance Classes give users a way to specify HVSA that is appropriate for the work environment and hazards:

- Performance Class 1 provides the minimum amount of required material to differentiate the wearer visually from non-complex work environments.
- Performance Class 2 includes additional amounts of high-visibility materials to allow design opportunities to define the human form more effectively.
- Performance Class 3 offers greater visibility to the wearer in both complex backgrounds and through a full range of body movements.
- The 2015 edition also establishes three types of garments:
 - Type O (off-road), for non-roadway use, where workers are not exposed to highway traffic or temporary traffic control zones. Type O HVSA is Performance Class 1.
 - Type R (roadway), for use where workers are exposed to traffic from public access highway rights-of-way or roadway temporary traffic control zones. Type R HVSA may be Performance Class 2 or 3.
 - Type P (public safety) for emergency and incident responders and law enforcement personnel who are exposed to struck-by hazards in roadway or off-road work environments. These garments provide additional options addressing competing hazards or the need for access to special equipment. Type P HVSA may be Performance Class 2 or 3.

TYPES

- High visibility safety apparel
- Disposable protective apparel
- Ergonomic apparel

TRAINING & COMPLIANCE COURSES — PAGE 152

- Personal Protective Equipment (PPE)
- Ergonomics
- Arc Flash

¹ National Work Zone Awareness Week — Safety: Federal Highway Administration." Safety. Web. 08 Mar. 2021.

High visibility apparel



1



2



1 ANSI Class 2, Type R, Vest

- Features two pockets and 2" reflective silver tape
- Breathable polyester mesh
- Choose from two styles: zipper closure or breakaway vest with hook and loop closure
- Available in hi-vis lime yellow and hi-vis orange

Part Numbers: Yellow with zipper: M • 575358 L • 575359 XL • 575360 XXL • 575361
 Orange with zipper: M • 576792 L • 576793 XL • 576794 XXL • 576795
 Yellow Breakaway: M • 78562 L • 78563 XL • 78564 XXL • 78565
 Orange Breakaway: M • 593865 L • 593866 XL • 593867 XXL • 593868

2 ANSI Class 2, Type R, Woman's Contoured Vest

- Designed and sized specifically for women
- Zipper closure Solid Front, Mesh Back and Adjustable Waist
- One inner pocket and two outer zippered waist pockets

Part Numbers: S • 615730S M • 615730M L • 615730L XL • 615730XL XXL • 615730XL2

3 ANSI Class 2, Type R, Flame Resistant Vest

- NFPA 70E, meets ASTM F1506, PPE Level 1 with Arc Rating of 5.1 cal/cm(2)
- Hook and loop closure, 2" reflective tape, solid GlenGuard® modacrylic fabric
- To be worn over arc rated clothing only

Part Numbers: M • 565481 L • 565482 XL • 565483

4 ANSI Class 2, Type R, Surveyor's Vest

- Features solid front, mesh back, zipper
- 2" two-tone reflective tape
- 2 external pockets, 2 internal pockets, 1 chest radio pocket, 1 internal pen pocket, 1 external chest pocket

Part Numbers: Orange: S • 606859S M • 8306688 L • 8306689 XL • 8306690 XXL • 8306691
 XXXL • 8306692 XXXXL • 8306693
 Yellow: S • 8306898 M • 8306899 L • 8306900 XL • 8306901 XXL • 8306902
 XXXL • 8306903 XXXXL • 8306960

5 ANSI Class 3, Type R, Surveyor's Vest

- Features solid front, mesh back, zipper and breathable sleeves
- 2" two-tone reflective tape
- 2 external pockets, 2 internal pockets, 1 chest radio pocket, 1 internal pen pocket, 1 external chest pocket

Part Numbers: Orange: M • 8313853 L • 8313854 XL • 8313855 XXL • 8313856 XXXL • 8313857
 Yellow: M • 8313846 L • 8313847 XL • 8313848 XXL • 8313849 XXXL • 8313850

6 Non-ANSI Safety Vests*

- Features hook-and-loop closure, breathable polyester mesh, side elastic
- One size fits most
- 1 3/8" prismatic tape
- Does not satisfy ANSI 107 visibility requirement for Hi-Vis garments

Part Numbers: Orange • 322200 Green • 32225
 Orange with Yellow Stripes • 322210
 Orange with Silver Stripes • 322220
 Green with Silver Stripes • 322240



3



4



5



6

High visibility apparel



7



8



9

7 ANSI Class 2, Type R Short Sleeve T-Shirt

- Enhanced with 50+ UPF/UV sun protection
- Durable lightweight performance wicking fabric
- Black bottom, 2" reflective tape

Part Numbers: Orange: S • 600715 M • 600716 L • 600717 XL • 600718X XXL • 600719
XXXL • 600720
Yellow: S • 605954S M • 605954M L • 605954L XL • 605954XL1 XXL • 605954XL2
XXXL • 605954XL3

8 Non-ANSI Long Sleeve T-Shirt*

- Enhanced with 50+ UPF sun protection
- Built-in insect repellent (Permethrin) repels mosquitoes, fleas, ticks, ants and other biting insects
- Durable, lightweight, performance wicking material
- Does not satisfy ANSI 107 visibility requirement for Hi-Vis garments

Part Numbers: Orange: M • 606206M L • 606206L XL • 606206XL1
Yellow: M • 610645M L • 610645L XL • 610645XL1 XXL • 610645XL2 XXXL • 610645XL3

9 ANSI Class 3, Type R Bomber Jacket

- Durable, waterproof, polyester outer shell with taped seams
- 2" silver reflective tape
- Features quilted insulation, 7 pockets, detachable hood

Part Numbers: Orange: M • 577346 L • 577347 XL • 577348 XXL • 577349
Yellow: M • 575977 L • 575978 XL • 575979 XXL • 575980

Disposable apparel



1



2

1 Tyvek® Coveralls

- Lightweight and disposable
- Superb protection from dust and particulates such as asbestos, lead dust and paint spray
- Optional attached hood and/or attached boot
- 25 per case

Part Numbers: M • 569966 L • 569967 XL • 569968 XXL • 569969
Attached Hood & Elastic Ankle: S • 569994 M • 569995 L • 569996 XL • 569997 XXL • 569998
Attached Hood & Attached Boot: M • 569976 L • 569977 XL • 569978 XXL • 569979

2 Disposable Coveralls

- Economical, lightweight, breathable
- Microporous protection from dirt, grease, grime and light chemical splash
- Comfortable and strong in either wet or dry environments
- 25 per case

Part Numbers: M • 561392 L • 561393 XL • 561394 XXL • 561395
Attached Hood & Elastic Ankle: M • 569053 L • 569054 XL • 569055 XXL • 569056
Attached Hood & Attached Boot: M • 74538 L • 70001 XL • 70002 XXL • 70003

The Safety Director® disposable apparel



1 Polypropylene Bouffant Caps

- 1000 per case, Blue or White
- Lightweight for breathability, while maintaining snug, full coverage

Part Numbers: 21" Blue • 970321B 21" White • 970321W 24" Blue • 970324B 24" White • 970324W

2 Nylon Hairnets

- 1000 per case, White or Brown
- Lightweight for breathability, while maintaining snug, full coverage

Part Numbers: 21" White • 970521W 21" Brown • 970521BR 24" White • 970524W 24" Brown • 970524BR
28" White • 970528W

3 Polypropylene Shoe Covers

- Anti-skid
- 300 per case, White or Blue
- Lightweight breathable fabric that provides economical protection

Part Numbers: Large White • 9707LW Large Blue • 9707LB XL White • 9707XLW XL Blue • 9707XLB

4 Water Resistant Polyethylene Shoe Covers

- Water resistant and non-particulating with an embossed pattern for extra traction
- 300 per case, Blue

Part Numbers: Large Blue • 9706LB XL Blue • 9706XLB

5 Polypropylene Beard Covers

- 1000 per case, White
- Light weight breathable fabric that provides economical protection

Part Number: 9701SSW

6 Nylon Beard Nets

- 1000 per case, White

Part Number: 9702SSW

7 Water Resistant Polyethylene Sleeves —1 Mil

- 18" long with elastic tops and bottom
- 1000 per case, White or Blue
- Polyethylene sleeve covers are low-cost splash protection

Part Numbers: White • 970818W Blue • 970818B

8 Polypropylene Sleeves

- 18" long with elastic tops and bottom
- 200 per case, White

Part Numbers: White • 970918W

9 Water Resistant Polyethylene Bib Style Aprons — 2 Mil

- 28" x 46"
- 500 per case, White or Blue
- Full bib style provides economical protection

Part Numbers: White • 97002W Blue • 97002B

Ergonomic support



1



2



3



4



5



6



7

1 Standard Back Support

- 8" high breathable spandex back tapering to Velcro loop front panels
- Interior gripper webbing prevents belt from sliding
- Detachable, 1.5" Wide Suspenders

Part Numbers: S • 242410 M • 242420 L • 242430 XL • 242440 XXL • 242450

2 Premium Back Support

- 9" high elastic back tapering to 6" elastic front-panels
- Interior gripper webbing prevents belt from sliding
- Detachable, 1.5" Wide Suspenders

Part Numbers: S • 242110 M • 242120 L • 242130 XL • 242140 XXL • 242150 XXXL • 242160

3 ProFlex® Back Support

- All elastic 7.5" body for extra firm support
- Adjustable, detachable suspenders

Part Numbers: S • 563498 M • 563499 L • 563500 XL • 563501 XXL • 572534

4 MaxKnee Knee Pad

- Hard poly cap that resists abrasion
- Two comfortable, fully adjustable elastic straps hook and loop closures

Part Number: 271050

5 ProFlex® 615 Knee Sleeve

- Knee sleeve with open patella and double anterior pad
- Perforated neoprene body for enhanced breathability

Part Numbers: S • 76976 M • 76977 L • 76978 XL • 76979 XXL • 76980

6 Universal Wrist Wrap

- Durable 3" elastic for support and comfort
- Universal / Ambidextrous

Part Number: 274380

7 Flex Wrist Support

- Single-strap support with center stay limits downward wrist movements
- Two-stage hook and loop closure for custom fit and support

Part Numbers: Right S • 274130 M • 274150 L • 274170 XL • 274190
Left S • 274120 M • 274140 L • 274160 XL • 274180

ASK ABOUT
OUR LOGO
PROGRAM



Head protection

Meet the new generation of hard hats. Thanks to rapid advancements in technology, hard hats are lighter, more breathable and more comfortable than ever, making them more likely to be worn. From oil fields and gas refineries to construction sites, head protection is one of the most critical elements of your wearable safety equipment.

Head protection

STATISTICS

- 84% of all workers who suffered head injuries were not wearing head protection¹
- Head injuries account for 9% of all injuries to laborers²

OSHA 29 CFR 1910.135(A)(1)

"The employer shall ensure that each affected employee wears a protective helmet when working in areas where there is a potential for injury to the head from falling objects."

OSHA 29 CFR 1910.135(A)(2)

"The employer shall ensure that a protective helmet designed to reduce electrical shock hazard is worn by each such affected employee when near exposed electrical conductors which could contact the head."

HARD HAT CLASSES

Class E (Electrical): Provides ANSI Z89.1 impact protection and proof tested at 20,000 volts.

Class G (General): Provides ANSI Z89.1 impact protection and proof tested at 2,200 volts.

Class C (Conductive): Provides ANSI Z89.1 impact protection. Not tested for electrical resistance.

PRODUCT TYPES

- Hard hat/hard cap
- Bump cap
- Replacement suspensions
- Head protection accessories

For our comprehensive guide of available head protection products, ask your rep for our head protection catalog



TRAINING & COMPLIANCE COURSES — PAGE 152

- Personal Protective Equipment (PPE)
- Fall Protection
- OSHA 10 30-Hour Construction

¹ "Eliminating Gaps in PPE." The Fabricators. Web. 08 Mar. 2021.

² From head to toe, safety you should know: Hard hats. (n.d.). Retrieved March 08, 2021, from <https://www.lhsfna.org/index.cfm/lifelines/august-2007/from-head-to-toe-safety-you-should-know-hard-hats/#:~:text=The%20Bureau%20of%20Labor%20Statistics,of%20all%20injuries%20to%20laborers>

Head protection



1

1 MSA V-Gard® Cap Style

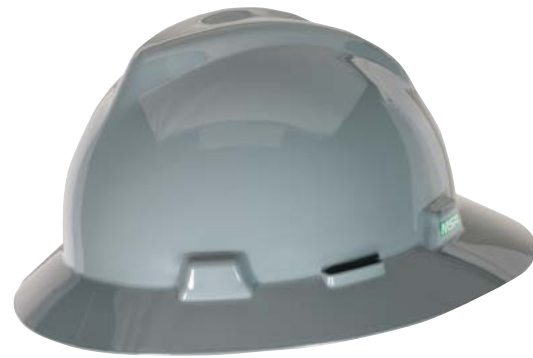
- ANSI/ISEA Z89.1-2014, Type 1, Class E (standard) or Type 1, Class C (vented)
- CSA Z94.1-15 Type 1, Class E (standard) or Type 1, Class C (vented)
- V-Gard® hard hats are ONLY CSA Z94.1-15 approved when equipped with Fas-Trac or 1-Touch suspensions
- Made with high-quality, wear-resistant materials
- More colors available in addition to those listed below. Ask your Cintas representative for more details
- MSA Logo Express® service offers the industry's highest quality custom logos and striping
- Compatible with faceshields, chinstraps, earmuffs and welding helmets

Part Numbers:	Fas-Trac® III Suspension	Staz-On® Suspension	Vented, Fas-Trac® III Suspension
	Blue • 6607BLU	Blue • 6608BLU	Blue • 6609BLU
	Green • 6607GRN	Hi-Viz Orange • 6608HVORG	White • 6609WHT
	Hi-Viz Orange • 6607HVORG	Red • 6608RED	Yellow • 6609YLV
	White • 6607WHT	White • 6608WHT	Hi-Viz Orange • 6609HVORG
	Yellow • 6607YLV	Yellow • 6608YLV	
	Hi-Viz Yellow • 6607HVYLV		
	Hi-Viz Lime • 6607HVLIM		
	Orange • 6607ORG		

2 MSA V-Gard® Full Brim

- ANSI/ISEA Z89.1-2014, Type 1, Class E (standard) or Type 1, Class C (vented)
- CSA Z94.1-15 Type 1, Class E (standard) or Type 1, Class C (vented)
- V-Gard® hard hats are ONLY CSA Z94.1-15 approved when equipped with Fas-Trac or 1-Touch suspensions
- Made with high-quality, wear-resistant materials
- More colors available in addition to those listed below. Ask your Cintas representative for more details
- MSA Logo Express® service offers the industry's highest quality custom logos and striping
- Compatible with faceshields, chinstraps, earmuffs and welding helmets

Part Numbers:	Fas-Trac® III Suspension	Staz-On® Suspension	Vented, Fas-Trac® III Suspension
	Blue • 6610BLU	Blue • 6611BLU	White • 6612WHT
	Green • 6610GRN	Green • 6611GRN	Yellow • 6612YLV
	Red • 6610RED	White • 6611WHT	Gray • 6612GRY
	White • 6610WHT		Hi-Viz Yellow • 6612HVYLV
	Yellow • 6610YLV		



2



3

3 Dynamic Whistler™ Cap Style

- ANSI/ISEA Z89.1-2014, Type 1, Class E (standard) or Type 1, Class C (vented)
- CSA Z94.1-15 Type 1, Class E (standard) or Type 1, Class C (vented)
- Lightweight design for reduced worker fatigue
- 4-point suspension with strong textile straps and crown comfort pad
- Easy height adjustment for a precise fit
- More colors available in addition to those listed below. Ask your Cintas representative for more details
- Rain trough for extra convenience in adverse weather conditions, sheds rain and moisture away from the face

Part Numbers:	Wheel Ratchet Suspension	Pin-lock Suspension	Vented, Wheel Ratchet Suspension
	White • 6601WHT	White • 6602WHT	White • 6603WHT
	Blue • 6601BLU	Blue • 6602BLU	Blue • 6603BLU
	Green • 6601GRN	Red • 6602RED	Yellow • 6603YLV
	Orange • 6601ORG	Yellow • 6602YLV	Hi-Viz Yellow • 6603HVYLV
	Yellow • 6601YLV	Hi-Viz Orange • 6602HVORG	
	Lime Green • 6601LMGRN		
	Hi-Viz Orange • 6601HVORG		
	Hi-Viz Yellow • 6601HVYLV		

4 Dynamic Kilimanjaro™ Full Brim

- ANSI/ISEA Z89.1-2014, Type 1, Class E (standard) or Type 1, Class C (vented)
- CSA Z94.1-15 Type 1, Class E (standard) or Type 1, Class C (vented)
- Lightweight design for reduced worker fatigue
- 4-point suspension with strong textile straps and crown comfort pad
- Easy height adjustment for a precise fit
- More colors available in addition to those listed below. Ask your Cintas representative for more details

Part Numbers:	Wheel Ratchet Suspension	Pin-lock Suspension	Vented, Wheel Ratchet Suspension
	White • 6604WHT	White • 6605WHT	White • 6606WHT
	Blue • 6604BLU	Blue • 6605BLU	Grey • 6606GRY
	Green • 6604GRN	Green • 6605GRN	Orange • 6606ORG
	Red • 6604RED		Yellow • 6606YLV
	Yellow • 6604YLV		Hi-Viz Yellow • 6606HVYLV



4

Bump Caps



1 JSP HardCap A1+™ Bump Cap

- Does not meet ANSI or CSA standards for use as a hard hat
- For applications where hard hats are not required, but some protection from minor bumps and scalp lacerations is preferred
- Ultra sleek, low-profile baseball cap design
- The protective HDPE liner is removable, so the outer cap is fully washable with a plastic brim
- Mesh panels on the cap and terry cloth sweatband provide coolness and comfort

Part Numbers: Black • 8306356 Black / Hi-Viz Orange • 570680 Navy Blue • 8308846
Black / Hi-Viz Yellow • 575212

2 Pyramex Ridgeline Bump Cap

- Does not meet ANSI or CSA standards for use as a hard hat
- For applications where hard hats are not required, but some protection from minor bumps and scalp lacerations is preferred
- 4-point glide lock suspension
- Ventilation holes and replaceable sweat band for cool comfort

Part Numbers: Blue • 6614BLU Green • 6614GRN Red • 6614RED White • 6614WHT
Yellow • 6614YLLW Orange • 6614ORG

Suspensions and Accessories



1 Replacement MSA Hard Hat Suspensions

Part Numbers: Fas-Trac® III Ratchet Suspension • 581475
Staz-On® Non-Ratchet Suspension • 8303648

2 Replacement Dynamic Hard Hat Suspensions

Part Numbers: Replacement Ratchet Suspension • 6601SUSP
Replacement Pinlock Suspension • 6602SUSP

3 Hard Hat Chin Strap

- Keeps helmet in place
- Flexible construction and adjustable design for long-wearing comfort
- J-style hook fits most hard hats

Part Number: 602797

4 Hard Hat Chin Strap With Chin Cup

- Elastic chin strap with chin cup for a comfortable fit
- Adjustable buckle on both sides to make length adjustment easy
- Quick clips design for easy installation on most hard hats on the market

Part Number: 606283

5 Hard Hat Emergency Identification Tag

- In Case of Emergency (ICE) identification sticker
- Strengthens on-site safety procedures and worker information records
- 100% Waterproof
- 3M® adhesive will not weaken or damage safety helmets

Part Number: 606064

Frames and Face Shields



1 Universal Face Shield Brackets

- Brackets fit most manufacturers' hard hats
- Accommodate a wide variety of face shields

Part Numbers: Aluminum (Cap Style) • CR102 Aluminum (Full Brim) • 8310693 (pictured)
 Dielectric (Cap Style) • PYHHAN (pictured) Dielectric (Full Brim) • 8304053

2 MSA V-Gard® HDPE Frame

- Fits all MSA slotted cap
- Includes replaceable debris control which creates tight seal between frame and cap

Part Number: 8303610

3 MSA Universal HDPE Frame

- Heavy duty flat rubber strap allows easy and secure placement on all MSA hats, both cap and full brim
- Design allows use with other PPE, including earmuffs and respirators

Part Number: 566934

4 Clear Face Shields

- Meets ANSI Z87.1 standards
- .040, Clear PETG
- Protection from liquid splashes and flying debris

Part Numbers: 10" x 15.5" • CR101640 (pictured) 8" x 16" • CR181640

Sweat Bands and Shades



1 Absorbent Cellulose Sweatband

- Anti-mold treated and pre-moistened
- Sold in packs of 25

Part Number: 320200

2 Terry Toppers® Snap-on Sweatband

- Easily attaches to most hard hat suspension with snaps
- Soft material made to absorb and wick away sweat
- Sold in packs of 20

Part Number: 320330

3 Pyramex Ridgeline Bump Cap Sweat Band

- Fits Ridgeline bump cap

Part Number: 560932

4 Hard Hat Neck Shade

- Fits Regular and Full Brim Hard Hats
- Provides airflow, shade and visibility
- One size fits most

Part Numbers: Hi-Viz Yellow • 591695 (pictured) Hi-Viz Orange • 616789

Additional Accessories



1 Classic Shoulder-length Sherpa Liner

- Sherpa lined for maximum warmth and comfort
- Built-In warming pockets lined with DuPont™ Tyvek®
- 2 layers: 100% Cotton Twill outer shell and 50% Acrylic / 50% Polyester Sherpa lining

Part Number: 320430



2 Classic Regular Length Quilted Liner

- Built-In warming pockets lined with DuPont™ Tyvek®
- 3 layers: 100% Quilted Nylon Shell, 4mm foam center layer, and Fleece lining

Part Number: 589105



3 Value Regular Length Twill Liner

- 100% Cotton Twill
- No insulated ear barrier

Part Number: 320400



4 JSP Surefit™ Contour Cap Mounted Earmuff — PAIR

- NRR: 21 dB
- Fits universal accessory slot
- Durable polystyrene ear cups pivot and slide for a secure seal

Part Number: 575098



5 MSA HPE Cap Mounted Earmuff — PAIR

- NRR: 27 dBA
- Designed specifically for very high noise levels in places like airfields or power plants
- Easy to adjust cups, even with gloves on
- Three distinct wearing positions

Part Number: 29401



6 MSA Sound Control SH — PAIR

- NRR 25: dBA
- Use with MSA slotted full brim helmet
- Easy ear cup height adjustment and spring design offers low pressure and a high level of comfort
- Retain the Class E dielectric rating on the V-Gard full brim hard hat

Part Number: 57130

Hard Hat Logo Program

Let the world know who you are while your head protection gear is on site. With our logo program, you can add your company logo or slogan to hard hats for a custom look.

- Logo(s) can be placed on the front, back or sides of the hard hat
- Image file for logo can contain up to four colors
- State-of-the-art pad printing technology for a high quality, long-lasting logo
- Lead time is 2–4 weeks upon customer approval of final proof
- Talk to your Cintas representative for more details or to place an order

Sold in the following case quantities:

PIP HARD HATS

12 hats

MSA HARD HATS

20 hats

PIP BUMP CAPS

20 caps

PYRAMEX BUMP CAPS

16 caps



You can use different colored hard hats and logos to distinguish between employees, contractors and visitors



Fall protection and gas detection

STATISTICS

- Falls are the leading cause of construction deaths¹
- In 2015, there were 350 fatal falls to a lower level out of 937 construction fatalities²
- OSHA's review of accident data indicates that atmospheric hazards cause most confined space deaths and injuries³

OSHA 29 CFR 1910.146 APP B(1)

"The atmosphere of a confined space should be analyzed using equipment of sufficient sensitivity and specificity to identify and evaluate any hazardous atmospheres that may exist or arise"

OSHA 29 CFR 1926.501(B)(1)

"Each employee on a walking/working surface (horizontal and vertical surface) with an unprotected side or edge which is 6 feet (1.8 m) or more above a lower level shall be protected from falling by the use of guardrail systems, safety net systems, or personal fall arrest systems."

OSHA 29 CFR 1910.28(B)(1)(I)

"Except as provided elsewhere in this section, the employer must ensure that each employee on a walking-working surface with an unprotected side or edge that is 4 feet (1.2 m) or more above a lower level is protected from falling by one or more of the following:

OSHA 29 CFR 1910.28(b)(1)(i)(A) Guardrail systems;

OSHA 29 CFR 1910.28(b)(1)(i)(B) Safety net systems; or

OSHA 29 CFR 1910.28(b)(1)(i)(C) Personal fall protection systems, such as personal fall arrest, travel restraint, or positioning systems"

FALL ACCESSORIES

- Self-Retracting Lanyard (SRL): used in situations where a shock-absorbing lanyard would not be able to arrest the fall in time. Commonly used when working on ladders, in stairwells and in scissor lifts.
- Personal Fall Limiter (PFL): a self-retracting lanyard that arrests a fall within a couple of inches. Easier to work with in some emergency situations.

TRAINING & COMPLIANCE COURSES — PAGE 152

- Fall Protection
- Confined Space
- Personal Protective Equipment (PPE)
- Hazard Communications

¹ UNITED states Department of labor. (n.d.). Retrieved March 08, 2021, from [https://www.osha.gov/stopfalls/#:~:text=FALLS%20ARE%20THE%20LEADING%20CAUSE,construction%20fatalities%20\(BLS%20data\).](https://www.osha.gov/stopfalls/#:~:text=FALLS%20ARE%20THE%20LEADING%20CAUSE,construction%20fatalities%20(BLS%20data).)

² Hall, R. (2020, November 12). Fall protection and prevention. Retrieved March 08, 2021, from <https://news.whitecap.com/safety-stand-down-fall-protection/#:~:text=Falls%20continue%20to%20be%20the,construction%20fatalities%20recorded%20in%202015.>

³ OSHA instructions. (2003). OSHA 2002 Recordkeeping Simplified, 433-464. doi:10.1016/b978-075067559-8/50043-0

Fall protection and gas detection

You know the hazards your employees face when they work in confined spaces or from heights — two of the most dangerous spots in which to work. Fall protection and gas detection are critical elements of any PPE program, and fortunately, improvements to technology are helping to make your employees safer.

Fall protection



1



2



3



4

1 The Safety Director® Fall Protection Kit

- Contains: MSA Workman™ body harness, Workman™ energy-absorbing tie-back lanyard, suspension trauma safety step and convenient carrying bag
- Workman™ Harness provides comfortable protection and fits a wide range of body types and sizes
- Industrial design, economical price

Part Numbers: Complete Kit – 1 D-Ring, Standard • 35320 Complete Kit – 3 D-Ring, Standard • 35322
Complete Kit – 1 D-Ring, XL • 35330 Complete Kit – 3 D-Ring, XL • 35332

2 MSA Evotech™ Lite Full Body Harness

- Aluminum hardware decreases weight of harness by 20%
- Patent-pending leg strap design keeps leg straps in place, increasing mobility and comfort
- Sub-pelvic strap with patented variable width webbing provides 50% more surface area for improved weight distribution and comfort

Part Numbers: Back, Hip and Front D-Ring:
Tongue Buckle Leg Straps - XS • 611185 Tongue Buckle Leg Straps - Standard • 611186
Tongue Buckle Leg Straps - XL • 611187 Tongue Buckle Leg Straps - Super XL • 611188
Quick-Connect Leg Straps - XS • 611177 Quick-Connect Leg Straps - Standard • 611178
Quick-Connect Leg Straps - XL • 611179 Quick-Connect Leg Straps - Super XL • 611180
Back and Hip D-Ring:
Quick-Connect Leg Straps - XS • 611181 Quick-Connect Leg Straps - Standard • 611182
Quick-Connect Leg Straps - XL • 611183 Quick-Connect Leg Straps - Super XL • 611184

3 MSA Workman™ Arc Flash Harness

- ASTM F887 third-party tested to protect from falls after an arc flash of 40 cal/cm²
- OSHA 1910.269 and 1926 Subpart V compliant
- Economical, sleek design, lightweight, comfortable; features tongue buckle leg straps and belay loops

Part Numbers: Crossover Harness:
Back Web Loop - XS • 611200 Back Web Loop - Standard • 611201
Back Web Loop - XL • 611202 Back Web Loop - Super XL • 611203
Back and Side Web Loop - XS | 611196 Back and Side Web Loop - Standard • 611197
Back and Side Web Loop - XL | 611198 Back and Side Web Loop - Super XL • 611199
Vest-Style Harness:
Back Web Loop - XS • 611192 Back Web Loop - Standard • 611193
Back Web Loop - XL • 611194 Back Web Loop - Super XL • 611195
Back and Side Web Loop - XS • 611190 Back and Side Web Loop - Standard • 607146
Back and Side Web Loop - XL • 607144XL1 Back and Side Web Loop - Super XL • 611191

4 MSA Confined Space Tripod Kit

- Ideal for entry and rescue in tanks, manholes and other vertical entry work practices
- Allow for non-entry rescue of a confined space entrant and great portability
- Lift and lower materials and personnel via the hoist while having the ability to use an SRL

Part Numbers: 593276

Fall protection

Ask your Cintas representative about our fall protection inspections



5



6



7



8



9



10



11

5 MSA Suspension Trauma Safety Step

- Fast, easy installation and deployment
- Multiple loop design accommodates all heights and sizes
- Attaches to any harness

Part Number: 35124

6 MSA V-TEC™ Mini Personal Fall Limiter

- 6' (1.8m), single-leg, 36C snaphook, steel carabiner (top)
- Extremely compact and lightweight compared to other options
- Uses multiple spring radial energy-absorbing technology

Part Number: 599393

7 MSA Latchways Standard Self-Retracting Lanyard

- Frictionless Constant Force® braking mechanism, ATEX assessed
- Impact resistant housing, 100% Full Contact™ locking mechanism
- 400 lb worker capacity (cable only)

Part Number: 607896

8 MSA V-TEC™ Twin-Leg Mini Personal Fall Limiter

- 6' (1.8m), twin-leg, AL36CL snaphooks
- Extremely compact and lightweight compared to other options
- Uses multiple spring radial energy-absorbing technology

Part Numbers: Aluminum Triple Lock Carabiners • 611175 36CL Snaphooks • 611174
Twin Link Connector • 609004

9 MSA V-Series Standard Twin-Leg Adjustable Energy Absorbing Lanyard

- 6', (2) 36C large snaphooks
- These lightweight safety lanyards not only limit force on the body in a fall, but also on the anchor location
- Includes a clear, durable protective cover over the labels to increase service life and allow for easy inspection

Part Number: 614120

10 MSA PointGuard™

- 3' length
- Constructed using a 1¾" durable polyester webbing with 5,000 lb minimum braking strength
- Available with or without a D-ring

Part Numbers: With D-Ring • 2050090 Without D-Ring • 2050100

11 MSA V-Series Stretch Single-Leg Energy Absorbing Lanyard

- 6', (2) 36C small snaphooks
- Shock absorbing lanyard
- Bungee design helps reduce on the job snag and trip hazards
- Light-weight and streamlined design

Part Number: 614119

Gas detection and filtration

Contact your Cintas representative for a customized gas detection solution that fits your specific needs



1



2



3



4



5

1 Altair® Single Gas Detector

- Reusable, simple intuitive operation, small rugged design and dependable technology
- One-button operation and large, backlit LCD display
- Thick, water-resistant rubberized housing designed to withstand accidental drops or impact

Part Numbers: CO • 73509 O2 • 8308247 Disposable H2S • 35226

2 Altair® 4XR Multigas Detector

- Driven by state-of-the-art XCell® Sensors
- Fastest response times, fastest clear times and best warranty in the industry (3 years)
- Data logging, charger, calibration cap and tubing included

Part Number: 605965

3 Altair® 5X Multigas Detector

- Driven by state-of-the-art XCell® Sensors
- Fastest response times, fastest clear times, and best warranty in the industry (3 years)
- Monochrome display, data logging, charger, calibration cap and tubing included

Part Numbers: Instrument Only Kit (Monochrome Display) • 72643
Standard Kit (Monochrome Display) • 579704
Deluxe Kit (Color Display) • 563021

4 MSA Galaxy® GX2 Automated Test System

- Easy-to-use automated test stand functions as either stand-alone unit or enables total data access and control of the MSA ALTAIR detectors
- MSA Link™ Pro Software for proactive safety management, gas exposure email alerts, direct data input, live filtering, test and exposure queries, collecting and printing reports
- Color touch screen for ease of setup and viewing

Part Numbers: Altair 5X, One Valve • 571702 Altair 4X, One Valve • 580356 Electronic cylinder holder • 571704

5 BW Clip Gas Detector

- Compact and lightweight design makes it comfortable to wear
- Simple automatic calibration procedure
- Direct, real-time readings on large LCD

Part Number: H2S • 588919



Bloodborne pathogen and spill control

Your bloodborne pathogen and spill control program needs to be ready to deal with bodily fluids and hazardous chemicals. They are one of the most prevalent safety dangers in the workplace today.

OSHA 29 CFR 1910.1030

"OSHA's Bloodborne Pathogens Standard (29 CFR 1910.1030) as amended pursuant to the 2000 Needlestick Safety and Prevention Act, is a regulation that prescribes safeguards to protect workers against health hazards related to bloodborne pathogens. It has provisions for exposure control plans, engineering and work practice controls, hepatitis B vaccinations, hazard communication and training, and recordkeeping. The standard imposes requirements on employers of workers who may be exposed to blood or other potentially infectious materials such as certain tissues and body fluids."*

TRAINING & COMPLIANCE COURSES — PAGE 152

- Bloodborne Pathogens
- Hazard Communications

*Occupational Safety and Health Administration (OSHA)

Bloodborne pathogen and biohazard waste



1 Bloodborne Pathogen Kit

- Fast, efficient method for the absorption and disposal of potentially harmful blood and bodily fluids
- Contains protection mask, gloves, fluid clean-up kit, antiseptic wipes, spill clean-up, Red-Z spill control solidifier
- Wall-mountable, tamper-evident, refill/single-use

Part Numbers: BBP Kit • 250119 BBP Refill • 250100

2 Sharps® and Biohazard Medical Waste Mailback Systems

- Place medical and/or biohazardous waste into container and ship prepaid container when full
- After waste is destroyed, a "Certificate of Destruction" will be returned to you for your records
- Start-up System includes: 2 containers, 1 wall bracket, secure prepaid shipping container with protective inner poly bag and tie and complete instructions
- Replacement System includes: 1 container and secure prepaid shipping container with protective inner poly bag and tie

Part Numbers: 1-Gallon Sharps® Start Up Mailback System • 250300
 1-Gallon Replacement System • 250310 1-Gallon Wall Bracket • 592992
 5-Gallon Hazardous Waste Mailback System • 25035

3 Biohazard Bio-Bags

- Contains four red biohazard bags for the disposal of used bandages
- Universal biohazard symbol and "INFECTIOUS WASTE" imprinted on every bag

Part Number: 250279

Spill clean-up kits



1

2



3

4

5



6

7



1 The Safety Director® Battery Acid Clean-Up Kit

- Specialized kit provides essential supplies to neutralize, absorb and clean up incidental battery acid spills
- Neutralizes and absorbs up to a 2-gallon spill
- Contains: 6 cartons of acid neutralizer (2 lb each), 1 pair protective goggles, 1 face shield, 1 pair chemical resistant gloves, 1 pair chemical resistant boots, 1 mini dust pan & broom, 2 yellow disposal bags with ties, 1 disposable apron

Part Number: 360240

2 The Safety Director® 20 Gallon Spill Kit

- Large drum contains necessary supplies to contain and clean up chemical/hazmat spills
- Absorbs up to a 13-gallon spill
- Contains: 6 chemical/hazmat socks (3" x 48"), 6 chemical/hazmat pillows (10" x 10" x 2"), 5 universal pads (19" x 15"), 2 cartons of universal sorbent (40 oz each), 3 yellow disposal bags with ties, 1 pair chemical resistant gloves, 1 pair protective goggles

Part Number: 36020

3 The Safety Director® 6.5 Gallon Spill Kit

- Drum contains necessary supplies to contain and clean up chemical/hazmat spills
- Absorbs up to a 7-gallon spill
- Contains: 6 3" x 48" chemical/hazmat socks, 5 19" x 15" universal pads, 2 40 oz cartons of universal sorbent, 2 yellow disposal bags with ties, 1 pair chemical resistant gloves, 1 pair protective goggles

Part Number: 360210

4 The Safety Director® Economy Bag Spill Kit

- Compact size and economical price
- Absorbs up to a 6-gallon spill
- Contains: 3 3" x 48" chemical/hazmat socks, 10 19" x 15" universal pads, 1 40 oz carton of universal sorbent, 2 yellow disposal bags with ties

Part Number: 360220

5 Hi-Capacity Sorbent Pads

- 100 pack
- 19" X 15" pads
- Industrial grade

Part Numbers: Universal • 360640 Oil • 36065

6 Sorbent Socks

- 4" wide X 48" length
- Industrial grade
- Highly absorbent

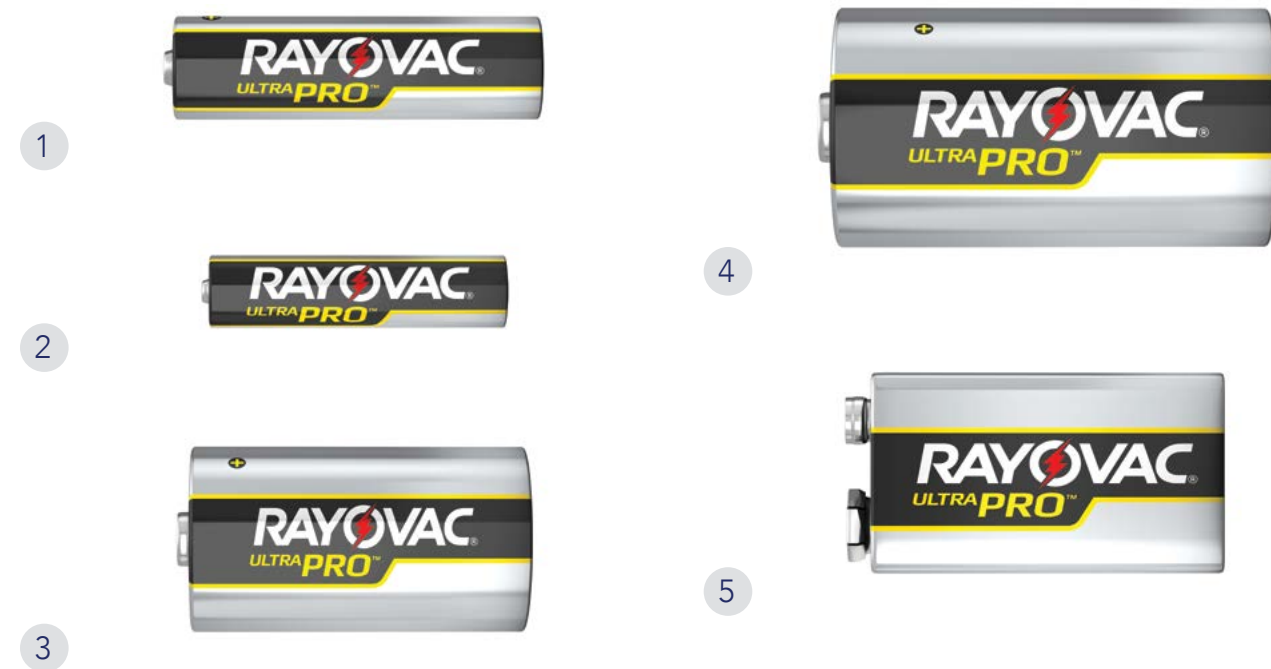
Part Numbers: Universal (15 pack) • 36066 Oil (30 pack) • 36067

7 The Safety Director® Super Sorbent — Instant

- 12 pack
- Lighter weight and more absorbent
- Turns liquid into a solid waste

Part Number: 36063

Batteries



1 AA Alkaline Battery

Part Number: 24 Count • 609231

2 AAA Alkaline Battery

Part Number: 24 Count • 609232

3 C Alkaline Battery

Part Number: 12 Count • 609234

4 D Alkaline Battery

Part Number: 12 Count • 609233

5 9V Alkaline Battery

Part Number: 1 Count • 609230

Flashlights



1 Coast Polysteel 400 Flashlight

- With a bush of a button cycle between full light, medium light and low light options
- Verified Drop Proof by ANSI FL1 drop testing from 3 meters high
- Features IPX8 weatherproof rating

Part Number: 610183

2 Coast IX5 Pocket Light

- Two-way clip gives you flexibility to stash the light in your pocket or clip it to the brim of your hat
- COAST's Slide Focus system enables you to seamlessly transition between spot and flood beam with the push or pull your finger
- Features IPX4 water resistant rating

Part Number: 599107

3 Coast G20 Penlight

- Optimized for up close use with crisp edges and little glare
- Impact resistant, weather resistant and virtually unbreakable LED
- Backed by Coast's lifetime warranty against defects in materials and workmanship

Part Number: 599133

4 Coast FL75 Headlamp

- Transition between ultra wide flood beam, long reaching spot beam or fixed red LED light to preserve night vision
- Features IPX4 water resistant rating and reflective safety strap
- Impact resistant, water resistant and virtually unbreakable LED

Part Number: 599106

Safety signage

Ask your Cintas representative about additional sign options



1



2



3



4

1 V-Signs

- Acrylic, includes holes for mounting
- Approx 6" x 9"
- Most popular:
 - AED • 341810
 - First aid • PZV1FA03A
 - Fire extinguisher • PZV1FE15A
 - Eyewash • PZV1EW03A
 - Spill station • PZV2SS24A
 - Hand and surface • 341990
 - WaterBreak™ • 609137

2 Flat Safety Signs

- Plastic, includes holes for mounting
- Approx 10" x 14"
- Also available in Spanish
- Most popular:
 - Emergency eye wash station • 341580
 - First aid • 341960
 - Fire extinguisher • 341980
 - AED • 341790

3 Labor Law Posters

- Federal and State "All-in-One" posters available
- Laminated on both sides
- Poster varies by state

4 First Aid & CPR/AED Poster

- 22" x 28"
- Helpful guide in case of an emergency
- Laminated on both sides

Part Number: 340789

For our comprehensive guide of available signs, ask your rep for our safety signage catalog





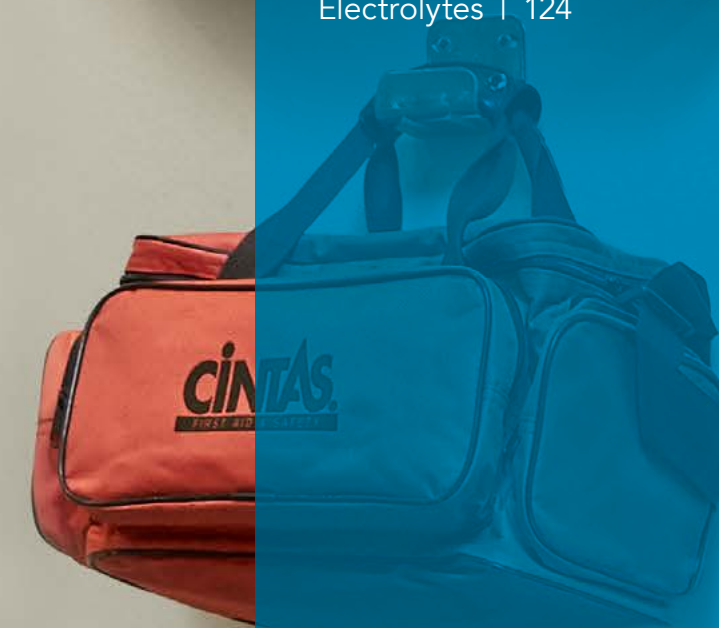
WaterBreak® and Hydration

You have plenty of work to do, and we know how much you care about your team. Whether your employees are at risk of experiencing heat stress or just trying to stay properly hydrated on the job, we have the flexible solutions you need. Choose from several electrolyte options from leading brands, or talk to your rep about the all-new WaterBreak®, a cleaner, more affordable water system and service.

PRODUCTS INCLUDE:

Coolers and accessories | 122

Electrolytes | 124



How the Service Works



Part Number: 604905 (does not include cups or filter)

Hydration

STATISTICS

- Over 4 out of 5 employed Americans believe it is their employer's responsibility to provide a workplace water station that is cleaned and serviced regularly.*
- Nearly half of those without a workplace water station (46%) say they would be more productive at work if their employer provided a water station.*
- Among those who have a water station at work, a third do not believe the water filter at their workplace water station is changed regularly.*

OSHA 1926.51(a)(1)

An adequate supply of potable water shall be provided in all places of employment.



USING LARGE WATER BOTTLES?

Benefits of switching to WaterBreak®:

- Avoid lifting heavy bottles
- No need to worry about storage
- No unsightly bottles lying around
- Flat monthly billing
- Never run out of water
- No more dirty dispensers or drip trays

BENEFITS OF SERVICE:

- Provide better tasting drinking water
- Increase employee morale
- Increase employee wellness
- Increase customer and visitor satisfaction



ALREADY HAVE A WATER COOLER?

Benefits of switching to WaterBreak®:

- No dirty drip tray buildup
- Regular filter changes
- Affordable price and no filter change fees
- Industry leading unit
- Flat monthly billing
- Consistently clean and professional look

- Increase convenience
- Avoid lifting heavy bottles
- Consistently cleaned

TRAINING & COMPLIANCE COURSES — PAGE 152

- Heat Stress Prevention
- First Aid and CPR/AED

*This survey was conducted online within the United States by Harris Poll on behalf of Cintas from July 28-August 1, 2017 among 1,081 U.S. adults ages 18 and older who are employed full time/part time

The WaterBreak®



FEATURES OF THIS COOLER:

- Closed water system for cleaner operation
- Hot, cold and room temperature water
- Hot water safety feature
- 2x cooling ability compared to leading units
- Self-draining drip tray (1½ gallon)
- Weight: 53 lbs, dimensions: 12.6" x 13.4" x 43.7"

Part Number: 700001

Ask about our Handsfree foot pedal option!

The WaterBreak® Countertop



FEATURES OF THIS COOLER:

- Hot, cold and room temperature water
- Closed water system for cleaner operation
- Hot water safety feature
- Polymer cabinet won't rust or scratch countertop
- Less than 17" tall, fits under most kitchen cabinets
- Fits large coffee containers & sport bottles
- Weight: 30 lbs, dimensions: 13.3" x 14.5" x 16.9"

Part Number: 700003CT



1



2



3

1 WaterBreak® V-Sign

Part Number: 609137

2 WaterBreak® 8oz Paper Cups (50 Pack)

Part Number: 615013

3 WaterBreak® Cup Dispenser

Part Number: 615014

4 HandsFree Foot Pedal Attachment

Part Number: 617363

YETI®



1



2



3



4

1 RAMBLER® 18 oz Bottle

Part Numbers: BLUE RAMBLER® 18 oz bottle • 616096BLU
 BLACK RAMBLER® 18 oz bottle • 616096BLK
 SEAFOAM RAMBLER® 18 oz bottle • 616096SEA
 WHITE RAMBLER® 18 oz bottle • 616096WHT
 STAINLESS RAMBLER® 18 oz bottle • 616096STN

2 RAMBLER® 20 oz Tumbler

Part Numbers: BLUE RAMBLER® 20 oz tumbler • 616098BLU
 BLACK RAMBLER® 20 oz tumbler • 616098BLK
 SEAFOAM RAMBLER® 20 oz tumbler • 616098SEA
 WHITE RAMBLER® 20 oz tumbler • 616098WHT
 STAINLESS RAMBLER® 20 oz tumbler • 616098STN

3 RAMBLER® 30 oz Tumbler

Part Numbers: BLUE RAMBLER® 30 oz tumbler • 616100BLU
 BLACK RAMBLER® 30 oz tumbler • 616100BLK
 SEAFOAM RAMBLER® 30 oz tumbler • 616100SEA
 WHITE RAMBLER® 30 oz tumbler • 616100WHT
 STAINLESS RAMBLER® 30 oz tumbler • 616100STN

4 YETI® TUNDRA® 45

Part Number: 616249

Electrolytes



1

1 Sqwincher® Squeeze®

- Tasty, frozen electrolyte popsicle rehydrates and cools your core temperature
- Assortment of five flavors
- 10 popsicles per bag

Part Number: 15 Bags • 1901750

2 Sqwincher® Qwik Stik® Tubes

- Sugar-free flavored powder electrolytes in a convenient tube
- Add to your water for electrolyte replenishment
- Assorted flavors, 10 Qwik Stiks per tube, 20 tubes per case

Part Number: 571113

3 Sqwincher® Qwik Stik®

- Single-serving Qwik Stiks are powdered electrolytes you add to water
- Fast, effective method of hydration with no sugar and no calories
- 500 per case, sugar-free

Part Numbers: Mixed Berry • 1901150 Lemonade • 1901170 Raspberry • 1901190 Peach Tea • 1901180
 Grape • 1901210 Lemon Lime • 1901200 Cool Citrus • 77296



2

4 Sqwincher® Powder Mix

- Quick, cooler-ready, and easy-to-mix powder delivers electrolyte replenishment with great taste
- No sugar and no calories; assorted flavors
- 32 packs per case, each pack yields either 2.5 gallons

Part Numbers: Variety Pack • 1900950 Sugar Free Variety Pack • 570463



3

5 Sqwincher® ZERO Liquid Concentrate

- Yields 5-gallons and mixes instantly with water
- Available in regular or sugar-free options
- Use with a pump spout

Part Numbers: Fruit Punch • 1901710 Grape Sqwincher • 1901720 Lemon Lime • 1901730
 Mixed Berry Sqwincher • 571111 Orange • 1901740 Pump (10 pack) • 1902240



4



5

Electrolytes



1 Gatorade[®] 5 Gallon Cooler

- Easy open top
- Made for use with Gatorade[®] Cooler Stand and Gatorade[®] 4 oz Cups

Part Number: 8302464

2 Gatorade[®] Cups

- Disposable
- Made for use with Gatorade[®] 5 Gallon Cooler and Gatorade[®] Cooler Stand

Part Numbers: 6oz Cone Cups • 8302466 7oz Gatorade Logo Cups • 572775

3 Gatorade[®] Cooler Stand

- 36.625" x 22.375" x 18.37"
- Easy, wheeled design
- Made for use with Gatorade[®] 5 Gallon Cooler and Gatorade[®] 4 oz Cups

Part Number: 1650510

4 Gatorade[®] Powder Packets

- Assorted flavors available
- One 21 oz package yields 2.5 gallons
- 32 packages per case

Part Numbers: Variety Pack • 1650040 Glacier Freeze • 1650550 Riptide Rush • 1650560
Fruit Punch • 1650240 Orange • 1650130 Glacier Cherry • 606112

5 Gatorade[®] 1.23 oz Powder Sticks

- One stick yields 20 oz
- Assorted flavors available
- 8 sticks per pack, 8 packs per case

Part Numbers: Lemon Lime • 8309347 Orange • 8308569 Fruit Punch • 8308568
G2 Fruit Punch • 8309346 G2 Glacier Freeze • 8309344 G2 Grape • 8309345



Automated External Defibrillators (AEDs)

A prompt response can be the difference between life and death. Start by equipping your business with industry-leading AED technology and professional onsite training and service.

Cintas provides products and solutions to help you respond to an emergency and help prevent serious injuries or death.

TOP PRODUCTS INCLUDE:

AED units | 132

AED accessories and disposable oxygen | 136



Automated external defibrillators (AEDs)

STATISTICS

- More than 356,000 out-of-hospital sudden cardiac arrest events occur each year in the US; 90% are fatal¹
- 50 states in the U.S. have Good Samaritan laws in place to protect bystanders who use an AED to resuscitate an SCA victim²
- When CPR and an AED are administered to a victim within the first two minutes of a cardiac event, the chances of survival increase 90%³

GOOD SAMARITAN LAWS

All 50 states and the District of Columbia have Good Samaritan-related laws. The details of Good Samaritan laws/acts vary by jurisdiction, including who is protected from liability and under what circumstances. Although these laws differ by state, all are designed to encourage people to help a stranger who needs assistance by reducing or eliminating the fear that, if they do so, they will suffer possible legal repercussions in the event that they inadvertently make a mistake in treating the victim.

OSHA RECOMMENDS AEDs IN THE WORKPLACE

“Automated External Defibrillators (AEDs) improve survival after an out-of-hospital cardiac arrest. Their presence reduces the critical time for treatment. Less time to defibrillation improves victims’ chances of survival. Having the devices appropriately located in a business or workplace improves the survivability of people experiencing a cardiac crisis.”

TRAINING & COMPLIANCE COURSES — PAGE 152

- First Aid and CPR/AED
- Emergency Preparedness

¹ 2018. American Heart Association. Heart Disease and Stroke Statistics - 2018 Update. https://professional.heart.org/professional/ScienceNews/UCM_498846_Heart-Disease-and-Stroke-Statisticsmdash2018-Update.jsp

² 2017. National Conference of State Legislatures. State Laws on Cardiac Arrest and Defibrillators. <https://www.ncsl.org/research/health/laws-on-cardiac-arrest-and-defibrillators-aeds.aspx>

³ Sudden Cardiac Arrest Association. About AEDs. http://www.suddencardiacarrest.org/aws/SCAA/pt/sd/news_article/43774/_PARENT/layout_details/false

Be **READY™** for sudden cardiac arrest

It takes a lot more than an AED to save a life. Proper planning, implementation, ongoing support and routine onsite service checks are critical in making sure the AED works when you need it most.

WITH THE AED SERVICE AGREEMENT BE READY™ IN 3 EASY STEPS:

1

PLANNING

CINTAS OFFERS:

- The AED 3® and AED Plus® by ZOLL®
- The ReviveR™ VIEW by Defibtech
- The HeartStart OnSite by Philips

PLACEMENT:

- You determine the type, location and number of AEDs needed for your business

2

IMPLEMENTATION

INSTALLATION:

- Your AED is professionally installed
- Your selected accessories will be delivered and installed alongside your AED

TRAINING:

- Receive a discounted rate on your AED training when you schedule a First Aid, CPR/AED and Bloodborne Pathogen course when executing a Service Agreement

3

SUPPORT

SERVICE VISITS:

- Pad and battery replacement
- Software upgrades

LIFEREADY 360™ POWERED BY STAT PADS:

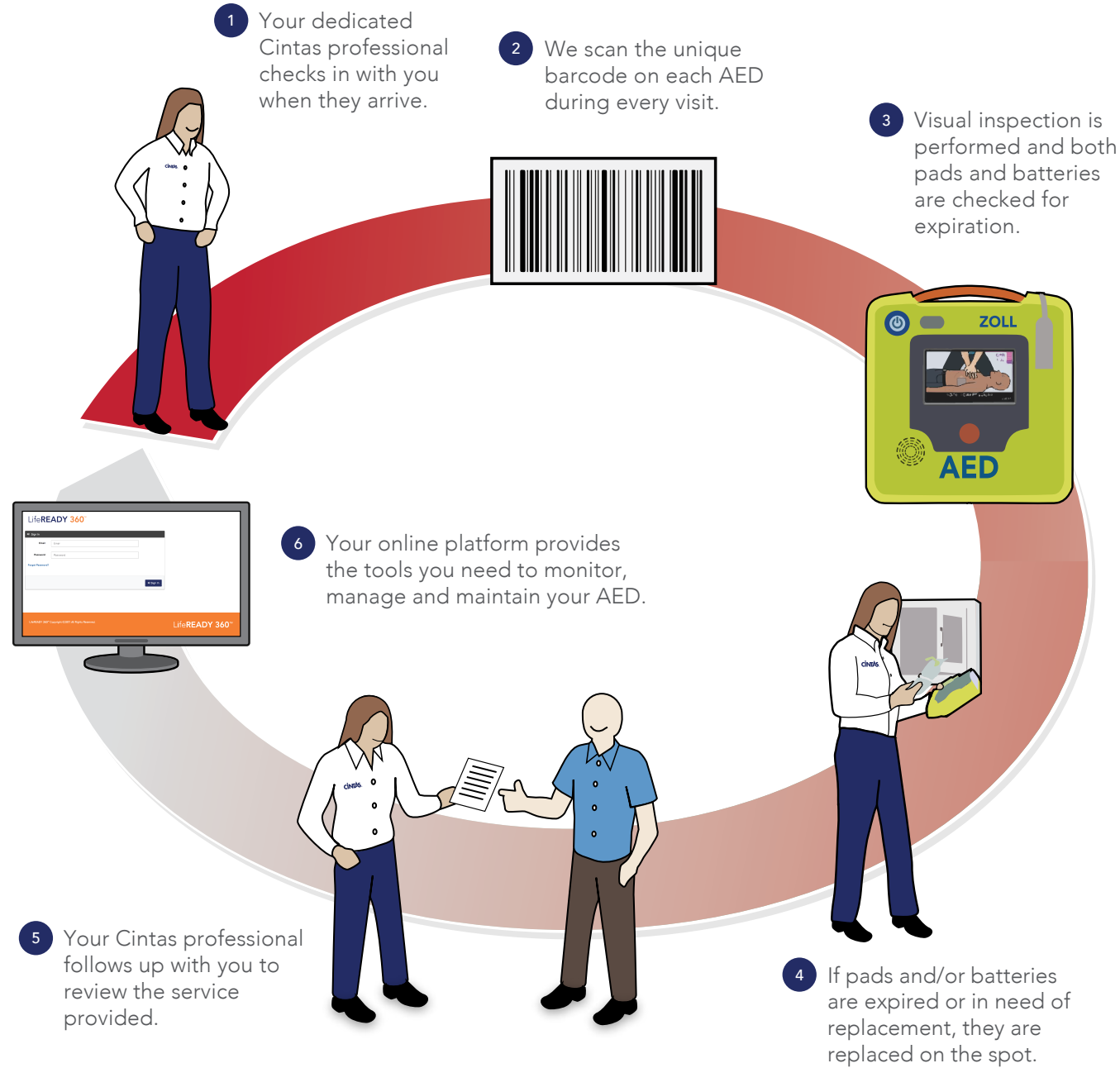
- Medical direction
- Tracking software
- Registration with EMS
- Post event support

LifeREADY 360™, powered by Stat PADS

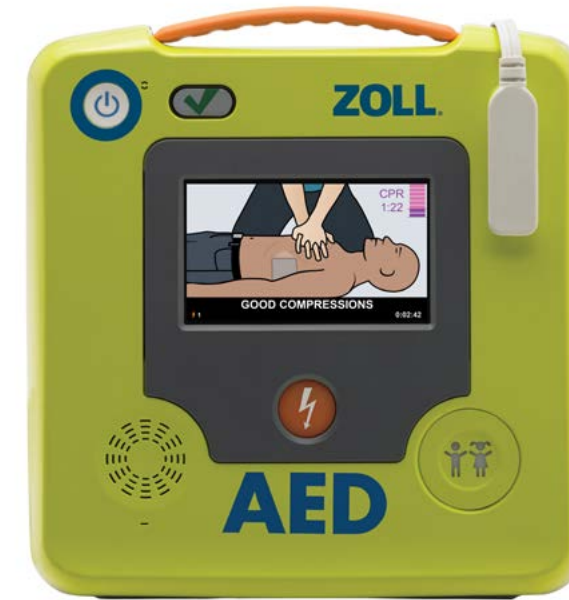
Your subscription to LifeREADY 360™ includes a medical prescription as required by the Food and Drug Administration (FDA) along with the following:

- **Medical Direction or Physician Oversight** — by using the LifeREADY 360™ portal, your AED program and activity will be overseen by the Stat PADS team.
- **AED Placement Reporting/EMS Registrations** — your AED program information will be registered with local and/or state EMS agencies (as may be required) in an effort to enhance and expedite emergency responder response times to a cardiac emergency.
- **Tracking Software** — The LifeREADY 360™ portal provides visibility into ongoing maintenance and emergency readiness status of each AED – you can log your AED checks, expiration dates and even keep track of your certified first responders’ training.
- **AED Program Design Guide** — LifeREADY 360™ provides a “design guide” to walk you through the process of developing an AED program for your organization/facility.

How the Service Works



The AED 3® by ZOLL®



The AED 3® utilizes Real CPR Help® along with a full color screen to help you deliver high-quality, consistent CPR.

- Easy to navigate large color LCD screen
- Simple to operate with clear one-touch buttons
- Real CPR Help® guides rescuers in delivering high-quality CPR consistent with current guidelines
- Enhanced bar gauge lets rescuers see when they are doing quality CPR

Part Number: 4003Z

Replacement Pads and Batteries

Part Numbers: CPR Uni-padz™ electrodes • 616852
 ZOLL® AED 3® Disposable Lithium Manganese Dioxide Battery • 616853

The AED Plus® by ZOLL®



The AED Plus® utilizes Real CPR Help® to measure CPR depth.

- Real CPR Help® has been clinically shown to more than double survival rates of SCA victims*
- Synchronized 5-year pad and battery life to help ensure device readiness
- One-piece CPR-D-padz® help ensure proper pad placement to focus shock on the heart where it is needed

Part Number: 4001Z

Replacement Pads and Batteries

Part Numbers: CPR-D-padz® electrodes • 8306150
 Pedi-padz® II pediatric electrodes (for infants and children 8 years or under or under 55 lbs.) • 8306188
 Duracell 123A Lithium Batteries (Sleeve of 10) • 8306151

*2013 Mesa Arizona OHCA study

The ReviveR™ VIEW by Defibtech



- The ReviveR™ VIEW is the first AED device to incorporate an interactive video display.
- Video and text display allows real time coaching, even in noisy environments
 - Two-button operating system helps ensure ease of use
 - Pre-connect pads with color and visual diagrams help reduce time to shock
 - Charging time is 4 seconds, helping reduce time to shock

Part Number: DEDCFC2310EN

Replacement Pads and Batteries

- Part Numbers:** Adult electrodes • DEDDP2001
 Pediatric electrodes (for infants and children 8 years or under or under 55 lbs.) • DEDDP2002
 4-Year Battery • DEDCF2003

The HeartStart OnSite by Philips



- The HeartStart OnSite is designed to be lightweight but powerful and easy to use.
- Turns on with easy-to-use pull handle
 - CPR coaching during a rescue
 - Safely delivers maximum shock strength
 - Quick Shock feature to minimize interruptions to CPR chest compressions

Part Number: 8311215

Replacement Pads and Batteries

- Part Numbers:** Adult electrodes • 8303918
 Pediatric electrodes (for infants and children 8 years or under or under 55 lbs.) • 1761220
 Disposable Lithium Manganese Dioxide Battery • 575314

AED accessories and disposable oxygen



1



2



3

1 AED Wall Cabinets

- Keeps emergency response equipment in a visible, secure location
- Optional battery-operated alarm sounds when cabinet door is open

Part Numbers: For AED 3®, AED Plus® and HeartStart OnSite:
 XL AED Cabinet w/ Alarm (20" x 20" x 12")* • 19140

Deluxe AED Cabinet w/ Alarm (17.5" x 17.5" x 9") • 19150

For ReviveR™ VIEW:
 Cintas Basic AED Cabinet w/ Alarm (18" x 17.25" x 4") • 19110

ReviveR™ AED Cabinet (No Alarm) (18" x 17.25" x 4") • 19120

2 AED Signage

- Informs employees and visitors in your facility about the availability and location of AEDs
- 6" x 9" v-sign protrudes from wall at an angle easily visible from multiple vantage points
- 10" x 14" flat sign mounts to wall for easy visibility

Part Numbers: V-Sign • 341810* Flat Sign • 341790

3 AED Soft Carrying Cases

- Store and transport your AED, an extra set of pads, extra battery and other accessories necessary during emergencies

Part Numbers: AED 3® Standard Carry Case (holds extra set of pads)* • 616856
 AED 3® Large Hard-shell Carry Case (holds extra set of pads and one spare battery) • 616857
 AED 3® Slim Hard-shell Carry Case (holds one spare battery) • 616858
 AED Plus® Black Carry Bag (holds extra set of electrodes and a sleeve of batteries) • ZM8000080201
 AED Plus® Large Rigid Plastic Carry Case (holds two extra set of pads and a sleeve of batteries) • 599520
 ReviveR™ VIEW Ballistic Nylon Soft Carrying Case • 21780

AED accessories and disposable oxygen



4



5



6



7



8



9



10

4 AED Electrodes

Part Numbers: AED 3® CPR Uni-padz™ electrodes • 616852*
 AED Plus® CPR-D-padz® electrodes • 8306150
 AED Plus® Pedi-padz® II pediatric electrodes (for infants and children 8 years or under or under 55 lbs.) • 8306188
 ReviveR™ VIEW Adult electrodes • DEDDP2001
 ReviveR™ VIEW Pediatric electrodes • DEDDP2002
 HeartStart Onsite Adult electrodes • 8303918
 HeartStart Onsite Pediatric electrodes • 1761220

5 AED Replacement Batteries

Part Numbers: AED 3® Disposable Lithium Manganese Dioxide Battery • 616853*
 AED Plus® Duracell 123A Lithium Batteries (Sleeve of 10) • 8306151
 ReviveR™ VIEW 4-Year Battery • DEDCF2003
 HeartStart OnSite Disposable Lithium Manganese Dioxide Battery • 575314

6 The R15™ by Rapid Oxygen

- Provides 15 minutes of humidified oxygen at 6L/min
- Easy-to-use, no maintenance required
- No prescription required
- No electricity or batteries required
- Non-explosive and requires no specialized storage
- Safe to store and use in all public areas

Part Numbers: R15™ Unit • 617075 R15™ Shelving Unit • 671077

7 AED Wall-Mount Bracket

- Keeps your AED close at hand
- The handle of the AED rests on this simple, easy-to-install wall bracket

Part Number: 132020

8 ReviveR™ VIEW Grab-N-Run Quick Response Kit

- Designed to transport your ReviveR™ VIEW AED and includes basic first aid supplies
- Closed bag features AED pocket with status indicator window
- Easy transportation

Part Numbers: ReviveR™ VIEW Kit • 21800 Empty ReviveR™ VIEW Bag • 21820

9 ReviveR™ VIEW Prep & Response Kit

- Easily transported bag filled with first aid items that may be needed in a cardiac emergency situation
- Contains: absorbent towel, protective gloves, CPR mouth barrier, antiseptic wipe, medical scissors and disposable razor
- 9.5" x 6.5" x 1"

Part Numbers: Standard Kit with Carry Case • 21859* Refill • 21880

10 Key Ring CPR ISO-SHIELD™

- Includes pair of gloves
- Designed to fit most adults and children
- Two flexible grips provide safer handling

Part Number: 171110



Emergency Eyewash and Shower Service

Routine service is always the most important part of any business' eyewash program. Without routine inspections, stations can often go unmaintained and can aggravate an injury during an emergency. Don't think twice about your eyewash stations being READY™ to respond in an emergency — let your dedicated Cintas professional help you manage this with our Annual and Monthly Service inspections.

TOP PRODUCTS INCLUDE:

Self-contained eyewash | 142

Plumbed eyewash | 144

Accessories and supplemental eyewash | 146



Emergency eyewash

Eyewash stations can often go unused and unnoticed until disaster strikes. With routine eyewash service and maintenance, you don't have to worry about your stations being prepared to respond in an emergency. From gravity-fed to secondary stations, Cintas has the products you need to stay **Ready for the Workday®**.

Emergency eyewash stations

STATISTICS

- Only 40% of Environmental Health & Safety professionals are “extremely confident” that their eyewash station is regularly maintained. Only 30% are “extremely confident” that the station would function properly in an emergency¹
- Eye injuries alone cost more than \$300 million per year in lost production time, medical expenses and worker compensation²

ANSI Z358.1-2014

This standard is commonly referred to for emergency eyewash and showers. Some points include:*

- Flush both eyes simultaneously
- Have a flush rate of 1.5 liters per minute
- Flush for 15 minutes
- Be hands-free and offer valves with constant flow
- Activate in one second or less
- Be located within 10 seconds of hazard
- Be located within a clear path
- Includes a highly visible sign identifying the station

TYPES OF EYEWASH STATIONS*

- **Self-contained units:** These units are very popular in the industrial market and are also referred to as ‘15 minute’ stations because they flow water for an uninterrupted 15 minutes. These are often placed next to hazards with high potential for eye injury (e.g. forklift stations, machinery, tooling equipment).
- **Supplemental units:** These units commonly come in bottle form in a variety of sizes and are typically meant for one-time use. These are often placed next to hazards with a reasonable potential for eye injury (copiers, paint-mixers, janitorial closets).
- **Plumbed units:** These units are built directly into a building’s water source. Plumbed units are available, but do require weekly inspections as well as temperature and pressure checks.

TRAINING & COMPLIANCE COURSES — PAGE 152

- Emergency Preparedness

¹ 2018. This survey was conducted among 124 safety professionals at the 2018 ASSP Professional Development Conference, June 3-6, 2018 in San Antonio, Texas.

² Washington State University. *Eye and Face Protection: The Eyes Have It*. <https://ehs.wsu.edu/ehs-training/factsheets/factsheet-eye-face-protection/>

The Safety Director® Emergency Eyewash Service Agreement

You might think you'll never use your self-contained eyewash station, but if you work with hazards, that could change in an instant. And when it does, you should be confident that you'll get clean, clear water.

Our service agreement and onsite inspections means you can always trust that your self-contained eyewash station will be **ready™** in an emergency.



1 The Safety Director® Eyewash Station

- Activates in less than one second
- Wall-mountable, 13-gallon

Part Number: 133440



2 Antibacterial Additive Concentrate (Compare to Eyesaline®)

- pH-balanced flushing solution concentrate for use in any self-contained eyewash station
- Provides 16 gallons of preserved, buffered isotonic saline solution
- Provides protection against bacteria, fungi, algae, staph and acanthamoeba growth

Part Number: 584940



3 Eyewash V-Sign

Part Number: PZV1EW03A



4 Eyewash Station Mat

- Protects floors from water hazard
- All-rubber construction for extreme durability

Part Number: 13216



5 Fluid Disposal Cart

- Easy collection of used flushing fluid, 33.75" x 17 7/8" x 16.5"
- Concave top surface with center drain, dual wheels, easy portability

Part Number: 132244



6 The Safety Director® Eyewash Stand

- Fits The Safety Director® Eyewash Station
- Sturdy, industrial grade
- Easy Assembly
- Allows station placement in virtually any environment without wall mounting

Part Number: 617353

How the Quarterly Service Works – self-contained



1 PLANNING

CINTAS OFFERS

- The equipment and accessories you want, all at a low monthly cost

PLACEMENT

- You determine the location and number of units needed for your business

2 IMPLEMENTATION

INSTALLATION

- Your emergency eyewash station is professionally installed and filled with clean water and antibacterial additive concentrate
- Your accessories will be delivered and installed alongside your unit

TRAINING

- Receive a free 30-day trial in the J. J. Keller® Safety Management Suite to update your written plans and access the Chemical Management Center

3 SUPPORT

SERVICE VISITS

- Your station will be routinely service and filled with fresh water and barcoded recordkeeping will be provided

Emergency plumbed eyewash



1 The Guardian Safety Station with Eyewash, Plastic Bowl

- Application: Combination eyewash and shower safety station. Eyewash features a plastic bowl with two GS-Plus™ spray-type outlet heads that deliver a flood of water for rinsing eyes.
- Spray Head Assembly: Two GS-Plus™ spray heads. Each head has a "flip top" dust cover, internal flow control and filter to remove impurities from water flow.
- Eyewash Bowl: 11-3/4" diameter orange ABS plastic.

Part Number: 1660040

2 The Guardian Safety Station with Eyewash, Stainless Steel Bowl and Cover

- Application: Combination eyewash and shower safety station. Eyewash has stainless steel cover to protect bowl from dust, dirt and other contaminants. Cover is raised automatically when flag handle is activated. Cover closes when handle is returned to closed position. Eyewash features two GS-Plus™ spray-type outlet heads that deliver a flood of water for rinsing eyes.
- Spray Head Assembly: Two GS-Plus™ spray heads. Each head has an internal flow control and filter to remove impurities from water flow.
- Eyewash Bowl: 11½" diameter stainless steel with bowl cover.

Part Number: 1660173

3 The Guardian Heated Safety Station with Eyewash

- Top Inlet, Rated for Class I, Division 2 Environment
- Application: Electric heat-traced stations prevent freezing even in extreme conditions. Thermostat regulated units are heated by self-limiting heat-tracing cable wrapped around internal pipe. Units are intended for cold weather use down to -40°F.
- Spray Head Assembly: Freeze-resistant with float-off dust covers and internal flow control.
- Eyewash Valve: ½" IPS brass three-way self-draining stay-open ball valve. US-made with brass ball and PTFE seals. Includes ½" NPT port to drain water from spray heads after use.

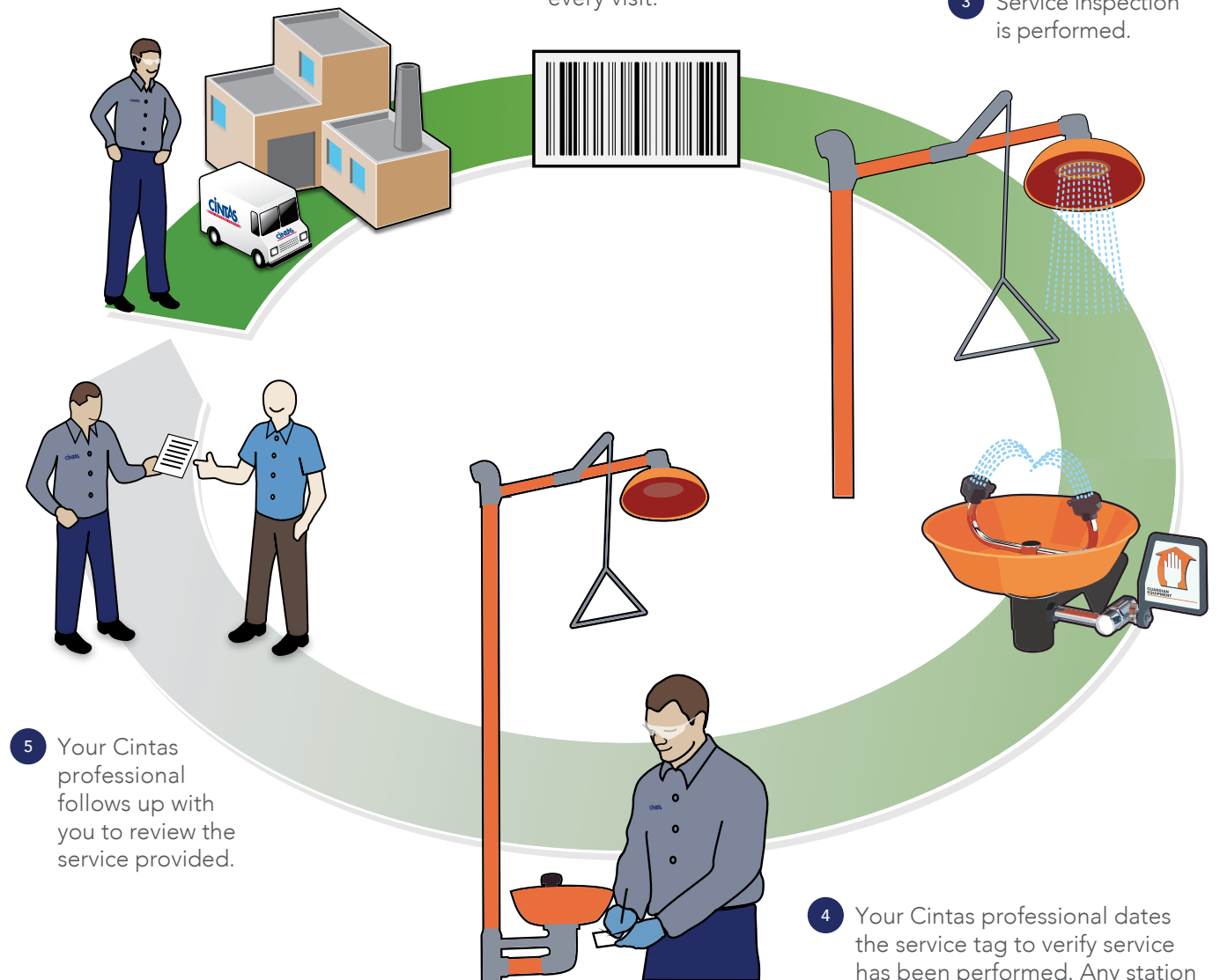
Part Number: 78379

How the Service Works – plumbed

- 1 Your dedicated Cintas professional checks in with you when they arrive.

- 2 We scan each station's unique barcode during every visit.

- 3 Service inspection is performed.



- 5 Your Cintas professional follows up with you to review the service provided.

- 4 Your Cintas professional dates the service tag to verify service has been performed. Any station that does not pass the service inspection is recorded.

Part Numbers: Weekly Inspection • 79587 Monthly Inspection • 999
Quarterly Inspection • 79588 Annual Inspection • 79589

Accessories and supplemental eyewash



1



2



3



4



5



6



7



8



9

1 Pure Flow 1000®

- Unique nozzle design provides soft ribbon of flushing solution at room temperature
- Includes a 24-month service cycle unless activated for use and exceeds ANSI Z358.1-2014
- Integrated fluid reservoir to capture waste for disposal

Part Numbers: Pure Flow 1000® Unit (cartridges not included) • 132400 2-Pack Cartridge • 132420

2 Fendall 2000®

- Same features as Pure Flow 1000®, plus an added alarm system that sounds at activation
- Includes a 24-month service cycle unless activated for use and exceeds ANSI Z358.1-2014
- Single sterile cartridge has a life of 2 years

Part Numbers: Fendall 2000® Unit (cartridge not included) • 8304459 Cartridge • 8300650

3 Eyewash Stand

- Fits Pure Flow 1000® and Fendall 2000® eyewash units
- Sturdy, industrial grade

Part Number: 8300608

4 Universal Cart

- Fits Pure Flow 1000® and Fendall 2000® eyewash units
- Sturdy, industrial grade

Part Number: 132220

5 Supplemental Emergency Eyewash Station

- Holds three 16 fl oz bottles of buffered isotonic solution
- Classified as a supplemental eyewash station

Part Numbers: Station Only • 19020 Eye and Skin Solution 16 fl oz • 130840

6 Industrial Eye Relief

- Significantly reduces eye irritation, including welder's flash
- Lubricates eyes and helps remove redness

Part Number: 130209

7 Eye Cups

- Non-sterile plastic cups shaped to fit over the eye for minor flushing of eyes with solution
- 6 cups per pack

Part Number: 131600

8 Eyewash

- Buffered isotonic solution, 4 fl oz
- Used to flush away foreign material from as or skin

Part Number: 130429

9 Lubricant Eye Drops

- Temporary relief of burning, irritation, and discomfort due to dryness of the eye or exposure to wind or sun
- 5-pack of single-use .4 mL tubes



Safety Training

Keeping up with all the training you need can be a tall order. You have new employees starting, multiple shifts to track, and without fail someone is out sick when you have an important training topic to cover.

We help safety managers keep their employees **Ready for the Workday®** by helping them tackle their challenging training program. Our blend of onsite and online training options make it easy to train your team on the topics that are important to your business — on your schedule. Since training only counts if you have documentation to back it up, we also offer online recordkeeping and our industry-leading Safety Management Tool.

TRAINING PRODUCTS INCLUDE:

- Onsite training | 152
- Online training | 157
- DIY training tools | 158
- Safety Management Suite | 159
- Most popular courses | 161

DISCLAIMER: Depending on the nature and location of the worksite, federal, state, and local regulations may require that employers offer specific training to their employees. Employers or businesses have sole responsibility to examine their operations to determine the type of training that is required or appropriate. Cintas does not provide recommendations or guidance regarding which safety and training programs are required or appropriate. The services are provided for educational purposes only.



cintas®

READY FOR THE WORKDAY®



96% of customers agree that Cintas training classes are a good value*

Our Instructors

EXPERIENCE

More than 480 years of combined experience

HOURS OF TRAINING

Over 75,000 classroom training hours every year

CLASSES TAUGHT

20,000 classes instructed each year

PEOPLE TRAINED

400,000+ people trained annually

CERTIFICATIONS

- American Heart Association (AHA) Faculty
- OSHA Outreach Instructors



Blended training approach

ONSITE TRAINING

- Take advantage of our nationwide network of nearly 200 full-time Cintas Training and Compliance instructors
- Schedule training at your facility or attend classes at your local Cintas First Aid & Safety facility
- Cintas is one of the largest American Heart Association Training Centers

VIRTUAL TRAINING

- Live instructors delivering personalized safety training
- Same great content for you and your employees, wherever you may be
- Combine virtual training with individual or small group onsite skills assessments

ONLINE TRAINING

- Choose from 350+ online training courses
- Convenience of anywhere, anytime training — perfect for employees who missed an instructor-led class
- Comprehensive, easy-to-use recordkeeping

TRAINING AND COMPLIANCE RESOURCES

- Access OSHA regulations and training tools, track SDS and create written programs with our comprehensive online Safety Management Suite
- Stream training videos online on a wide range of safety topics
- Arc flash risk hazard analysis, onsite hearing testing and more

*Based on 2016 Cintas customer satisfaction survey

DISCLAIMER: Depending on the nature and location of the worksite, federal, state, and local regulations may require that employers offer specific training to their employees. Employers or businesses have sole responsibility to examine their operations to determine the type of training that is required or appropriate. Cintas does not provide recommendations or guidance regarding which safety and training programs are required or appropriate. The services are provided for educational purposes only

For our comprehensive guide of available classes and services, ask your rep for our training and compliance catalog



Onsite training

With our nationwide network of instructors, you can easily schedule training at your location or a local Cintas First Aid & Safety facility.

WITH ONSITE TRAINING FROM CINTAS, YOU GET:

- Hands-on practice with a low student-to-instructor ratio
- Onsite training or open enrollment classes at your local Cintas facility
- Flexible, convenient scheduling to cover multiple shifts — including nights and weekends if needed
- National coverage makes it easy to train consistently across multiple facilities

HOW THE SERVICE WORKS



- 1 Schedule training at your convenience at your location or a Cintas First Aid & Safety facility.
- 2 Our instructors provide classroom instruction, complete with hands-on practice.
- 3 Documentation provided at conclusion of training.

Cintas instructors practice proper hand washing hygiene and will maintain an approximate distance of 6 feet or more away from others. During ALL Cintas onsite training classes:

- All students will be provided disposable gloves for the class
- Each student will be asked to provide their own pen/pencil
- Each instructor will ensure all materials have been disinfected before each class
- We will follow each customer's site-specific rules
- And during ALL First Aid/CPR/AED classes specifically:
- Cintas practices 1:1 student-to-mannequin ratio with no students sharing a mannequin
- All mannequins are disinfected prior to and after every training class
- Students will NOT share training materials (i.e. gauze, epi-pens, AED pads, etc.)

Depending on the nature and location of the worksite, federal, state, and local regulations may require that employers offer specific training to their employees. Employers or businesses have sole responsibility to examine their operations to determine the type of training that is required or appropriate. Cintas does not provide recommendations or guidance regarding which safety and training programs are required or appropriate. The services are provided for educational purposes only.

Onsite — first Aid, CPR/AED training

Cintas is one of the largest national providers of American Heart Association First Aid, CPR/AED training, certifying over 300,000 individuals per year.

- One-to-one student-to-mannequin ratio allows for personalized instruction and feedback on quality of CPR
- Online training with in-person skills check available for additional or absent employees

AHA Heartsaver First Aid, CPR/AED Training Course #650011

Course Details:

- Course lasts 4-5 hours
- Maximum of 9 students per instructor
- (larger classes available if requested)
- Individual certifications are valid for two years
- Pediatric CPR module available
- Also available as an online course with in-person CPR skills check (see page 147)

Training Includes:

- Learn to effectively recognize and treat adult emergencies prior to EMS arrival
- Be able to administer basic first aid
- Become certified to perform adult CPR (cardiopulmonary resuscitation)
- Learn to effectively use an AED (automated external defibrillator) to deliver a life-saving shock

Federal Regulation:

29 CFR 10.151(b) *"In the absence of an infirmary, clinic, or hospital in the near proximity to the workplace, which is used for the treatment of all injured employees, a person or persons shall be adequately trained to render First Aid."*



Available formats: ● Onsite ● Online*

* Must complete skills check for proper certification



Instructor-led medical courses	Course #	Expiration	Duration
First Aid and CPR/AED	650011	2 years	4–5 hours
CPR/AED only	65021	2 years	2–3 hours
First Aid only	65009	2 years	2–3 hours
Oxygen Awareness	65023	annually	30 minutes
Healthcare Provider: Basic Life Support (BLS)	65022	2 years	3–4 hours

Onsite training — safety topics

Bloodborne Pathogen Safety

Course #65003

Training Includes:

- Proper handling of blood and other bodily fluids to reduce risk of infection
- Safe and effective BBP removal and clean-up techniques
- Review of an effective exposure control plan

Federal Regulation:

29 CFR 1910.1030 (g)(2)(i) "Employers shall ensure that all employees with occupational exposure participate in a training program, which must be provided at no cost to the employee."

29 CFR 1910.1030 (g)(2)(ii)(a) "At the time of initial assignment."

29 CFR 1910.1030 (g)(2)(ii)(b) "At least annually thereafter."



Available formats: ● Onsite ● Online
● DIY Training Tools

Fire Prevention and Extinguisher Safety

Course #65222

Training Includes:

- Learn to differentiate between types of fire extinguishers and the type of fires they are effective against
- Help teach your employees what to do with either live burn or simulated fire extinguisher training

Federal Regulation:

29 CFR 1910.157(g)(1) "Where the employer has provided portable fire extinguishers for employee use in the workplace, the employer shall also provide an educational program to familiarize employees with the general principles of fire extinguisher use and the hazards involved with incipient stage fire fighting."

29 CFR 1910.157(g)(2) "The employer shall provide the education required in paragraph (g) (1) of this section upon initial employment and at least annually thereafter."



Available formats: ● Onsite ● Online*
● DIY Training Tools

*May need to complete hands-on training with a fire extinguisher.
Fire protection services available in most cities through Cintas Fire Protection.

What Is OSHA CFR? Title 29 of the Code of Federal Regulations is the legislation governing the U.S. Occupation Safety and Health Act, established in 1970 to prevent workplace injuries, illnesses and death.

Forklift/Powered Industrial Truck Safety

Course #65208 Skills Check #652091

Training Includes:

- Learn the different types of PITs
- Pre-inspection and safe operation methods
- Hands-on practice and skills testing on the forklift

Federal Regulation:

29 CFR 1910.178(l)(1)(i) "The employer shall ensure that each powered industrial truck operator is competent to operate a powered industrial truck safely, as demonstrated by the successful completion of the training and evaluation specified in [1910.178(l)]"

29 CFR 1910.178(l)(2)(ii) "Training shall consist of a combination of formal instruction (e.g., lecture, discussion, interactive computer learning, video tape, written material), practical training (demonstrations performed by the trainer and practical exercises performed by the trainee) and evaluation of the operator's performance in the workplace."

29 CFR 1910.178(l)(4)(iii) "An evaluation of each powered industrial truck operator's performance shall be conducted at least once every three years."

Hearing Conservation

Course #65230

Training Includes:

- Noise exposure and its impact on hearing
- Proper use of hearing protection devices to achieve a proper fit
- Inspection and care for hearing protection

Federal Regulation:

29 CFR 1910.95(k)(1) "The employer shall train each employee who is exposed to noise at or above an 8-hour time weighted average of 85 decibels in accordance with the requirements of [1910.95(k)]. The employer shall institute a training program and ensure employee participation in the program."

29 CFR 1910.95(k)(2) "The training program shall be repeated annually for each employee included in the hearing conservation program. Information provided in the training program shall be updated to be consistent with changes in protective equipment and work processes."

What Is OSHA CFR? Title 29 of the Code of Federal Regulations is the legislation governing the U.S. Occupation Safety and Health Act, established in 1970 to prevent workplace injuries, illnesses and death.



Available formats: ● Onsite ● Online*
● DIY Training Tools

* May need to complete an onsite skills check



Available formats: ● Onsite ● Online
● DIY Training Tools ● On-Site Testing

See page 156 for more information about onsite hearing testing

Onsite training — safety topics

Respiratory Protection and Fit Testing

Course #65252 #65501 Quantitative Fit Testing
#65500 Qualitative Fit Testing

Training Includes:

- Why respirators are important
- Proper selection, fitting, inspection and storage of respirators
- How to properly use a respirator

Federal Regulation:

29 CFR 1910.134(k) "... the employer [is] to provide effective training to employees who are required to use respirators. The training must... recur annually..."

29 CFR 1910.134(k)(3) "The employer shall provide the training prior to requiring the employee to use a respirator...."

We also provide on-site respirator fit testing and online medical clearance questionnaires. Please note: Medical clearance is required prior to an employee's initial fit test.



Available formats: ● Onsite ● Online
● DIY Training Tools ● On-Site Testing

Workplace Violence Prevention/ Active Shooter Preparedness

Course #65257

Training Includes:

- Categories of workplace violence
- Myths surrounding violence in the workplace
- Identifying areas of concern
- Options for dealing with an armed threat

Cintas has teamed up with the Center for Personal Protection and Safety, a leading developer of workplace violence prevention training, to offer on-site workplace violence/active shooter training.

Federal Regulation:

OSH Act of 1970 Section 5. Duties (a) "Each employer (1) shall furnish to each of his employees employment and a place of employment which are free from recognized hazards that are causing or are likely to cause death or serious physical harm to his employees."



Available formats: ● Onsite ● Online

What Is OSHA CFR? Title 29 of the Code of Federal Regulations is the legislation governing the U.S. Occupation Safety and Health Act, established in 1970 to prevent workplace injuries, illnesses and death.

Online training

In today's busy workplace, keeping your employees trained can be challenging. Let Cintas help you stay READY™ with online training solutions powered by the American Heart Association and J.J. Keller.

- Convenient anywhere, anytime training is great for remote employees, multiple shifts, new hires and employees absent from classroom training
- Comprehensive, easy-to-use recordkeeping system tracks your employees' progress

ONLINE SAFETY COURSES:

- Choose from 350+ topics to create the right training program for each employee
- Purchase classes on an as needed basis (as low as \$25) or as an annual subscription
- Scored quizzes help gauge comprehension

MOST REQUESTED ONLINE SAFETY COURSES:

- Active Shooter/Active Threat
- Back Safety
- Bloodborne Pathogens
- Confined Spaces: Entry Team Training
- Electrical Safety: Training for Unqualified Employees
- Emergency Preparedness and Response
- Ergonomics: Industrial
- Ergonomics: Office
- Fall Protection
- Fire Extinguisher Use
- Fire Prevention and Response
- Forklift Operator Safety Training
- Head, Eye and Face Protection
- Hearing Protection
- Heat Stress
- Lockout/Tagout
- Personal Protective Equipment
- Slips, Trips and Falls
- Stairway and Ladder Safety
- Walking-Working Surfaces

MEDICAL TOPICS AVAILABLE ONLINE WITH IN-PERSON SKILLS SESSION

	Course #	Expiration	Duration
First Aid and CPR/AED	65031	2 years	4 hours
CPR/AED only	65032	2 years	1 hour
First Aid only	65030	2 years	1.5 hours
Pediatric First Aid and CPR/AED 2 Years	583941	2 years	4 hours
Healthcare Provider: Basic Life Support (BLS)	8307636	2 years	2 hours

DIY training tools

Supplement your internal safety training with a number of training tools from Cintas.



VIDEO ON DEMAND:

- Stream videos directly from the internet on demand, whenever you need them
- Choose from a library of 100+ video topics that include supplemental PowerPoint presentations, quizzes, handouts and more
- Pay-Per-View pricing plans and subscription services are available

VIDEO TRAINING BOOKS:

- No classroom? No Internet? No problem!
- Targeted training for employees who are off the beaten path — or just offline

VIDEO TRAINING PROGRAMS:

- DVD-based programs created by subject matter experts
- Lesson plans and training guides to assist with delivery of the training

MOST REQUESTED TITLES

- Back Safety
- Bloodborne Pathogens (BBP)*
- Confined Space*
- Confined Space — Construction*
- Construction Safety Basics*
- Fall Protection*
- Fire Safety*
- Forklift Safety*
- Forklift Safety — Construction*
- Hazard Communication*
- Hazmat Training: All Employees
- Hazmat Transportation: Driver Training
- Ladder Safety*
- Lockout/Tagout*
- Sexual Harrassment
- Slips, Trips and Falls
- Walking-Working Surfaces*
- Workplace Safety Basics

*also available in Spanish



It's not enough to train your employees ... you need written programs, regulatory knowhow and documentation to back it up. But managing all that can be a tall order. That's why Cintas is collaborating with J.J. Keller to bring you the **Safety Management Suite**.

Contact us for a free trial
844.45.TRAIN | cintas.com/SMS

J.J. Keller® Safety Management Suite

YOU'LL GET INSTANT ACCESS TO:



Expert help: Ask J.J. Keller's experts an unlimited number of compliance questions in a secure, private environment.



Regulations: Reference an up-to-date repository of key federal and state regulatory requirements.



Written safety plans: Create custom safety plans tailored to the unique needs of your organization.



Training: Access hundreds of award-winning training programs and thousands of customizable training resources.



Chemical center: Maintain a comprehensive hazard communication program with unlimited access to a wide range of multi-language SDSs.



Incident center: Comply with OSHA's incident & illness record-keeping requirements and easily identify and track trends.



Audits & inspections: Generate and print checklists, assign inspection responsibilities and gather results for analysis and reporting.

*"Expert help" is not meant to replace a regulatory or legal consultant

Onsite hearing testing

FEATURES AND BENEFITS:

- Custom scheduling to fit your needs
- Convenient and customizable: testing only, testing and training or the full-service option
- State-of-the-art equipment and testing processes for quality results
- Industry-leading CAOHC certified audiologists oversee the process and review results
- Accuracy is key. We'll automatically retest if a potential hearing loss is detected
- Free access to your own secure online compliance and reporting system

Federal regulation states:

29 CFR 1910.95(G)(1) *"The employer shall establish and maintain an audiometric testing program as provided in this paragraph by making audiometric testing available to all employees whose exposures equal or exceed an 8-hour timeweighted average of 85 decibels."*



Simplify your hearing conservation program.

Some of our most popular training courses

MEDICAL TRAINING*

- • | | First Aid, CPR/AED
- • | | Basic Life Support for Healthcare Providers

•	Onsite
•	Online
•	DVD Compliance Program
•	Video On Demand (VOD)

SAFETY COMPLIANCE TRAINING*

- | | |
|--|---|
| • • Accident Investigation | • • Ladder Safety and Inspections |
| • • • Aerial and Scissor Lift Training | • • • Lockout/Tagout (Authorized and Affected) |
| • • Arc Flash — NFPA 70E | • • • Machine Safeguarding |
| • • • Back Injury Prevention | • • • Material Handling |
| • • • Bloodborne Pathogens | • Order Picker |
| • • • Confined Space Awareness and Entry | • • OSHA 10 and 30-Hour Construction |
| • • • DOT Awareness and CFR 49 | • • OSHA 10 and 30-Hour General Industry |
| • • • Drug-Free Workplace | • • • Overhead Crane Safety |
| • • • Electrical Safety Awareness | • • • Personal Protective Equipment |
| • • • Emergency Preparedness | • • • Powered Pallet Jack |
| • • • Ergonomics | • • • Reach Truck |
| • • • Fall Protection Training and Inspections | • • • Respiratory Protection and Fit Testing |
| • • • Fire Training: Live or Simulated | • • • Rigging Awareness |
| • • • Forklift Safety | • • • Sexual Harassment |
| • • • GHS/Hazard Communication | • • • Slips, Trips and Falls |
| • • • Hand and Power Tool Safety | • • • Spill Clean-Up |
| • • • HAZWOPER (8, 24 and 40 Hour) | • • • Walking and Working Surfaces |
| • • • Hearing Testing and Training | • • • Welding Safety |
| • • • Heat Stress Prevention | • • • Workplace Violence/
Active Shooter Awareness |
| • • • Hot Work Permits | |

*Please ask your service or sales professional which topics are available in your area

CINTAS

SAFETY

- FIRST AID
- SAFETY
- TRAINING
- AED



Item Number	Description	Pricing
15129	CINTAS 5 SHELF FULL FIRST AID CABINET / EA	\$499.00
700001	WATERBREAK COOLER AGRMENT / EA	\$55.00
133441_SA	SD EYEWASH SERVICE AGREEMENT / EA	\$109.00
4003Z	ZOLL 3 AED-AUTOMATIC / EA	\$2,399.00
400	SERVICE CHARGE / EA	\$19.95
20629	SINGLE UNIT BLEEDING CONTROL KIT / EA	\$123.80
99948	AED PRESCRIPTION 1 YR / EA	\$60.00
79589	ANNUAL PLMBD EYEWASH INSP / EA	\$115.79
31569	3/4X3 PLASTIC BANDAGE MED / BX	\$9.28
14129	CINTAS 4 SHELF FIRST AID CABINET / EA	\$399.00
29401	HH MUFF MSA CAP / EA	\$46.88
291200	EARPLUG EAR CLSC W/OCD 200/BX / BX	\$56.20
8308214	MECHANIX BLK MPACT GLV/L / PAA	\$38.88
15129	CINTAS 5 SHELF FULL FIRST AID CABINET / EA	\$499.00
6504	SPRAY BANDAGE 1OZ / EA	\$19.69
10266	BENGAY PAIN RELIEF PATCH / EA	\$10.74
12221	LIQUID BANDAGE SMALL / BAG	\$14.17
31029	1X3 PLASTIC BANDAGE SM / BAG	\$7.20
31069	1X3 PLASTIC BANDAGE MED / BX	\$12.63
32069	WOUND CLOSURE BNDG 10M/10L / BX	\$7.29
32540	BLUE MD FM 1X3 STRIP MED / BX	\$15.37
32630	BLUE MD FM FINGERTIP MED / BX	\$16.51
32670	BLUE MD WTRPROOF STRIP 40/BOX / BX	\$16.76
32680	BLUE MD WTRPROOF KNUCKLE / BX	\$17.94
32690	BLUE MD WTRPROOF XLFINGER / BX	\$18.50
32730	BLUE MD FOAM KNUCKLE MED / BX	\$17.29
32830	BLUE MD FM XLFINGER MED / BX	\$18.75
32930	BLUE MD FM LRG PTCH MED / BX	\$14.85
33129	QUIKHEAL F/P BANDAGES MED / BX	\$15.48
43039	FINGERTIP BANDAGE SM / BAG	\$8.75
43059	FINGERTIP BANDAGE MED / BX	\$14.31
43129	FINGERTIP BANDAGE XL MED / BX	\$15.63
43239	KNUCKLE BANDAGE SMALL / BAG	\$9.29
44249	ELASTIC STRIP SMALL	\$8.55
44269	ELASTIC STRIP MEDIUM	\$13.17
44429	LARGE PATCH 2"X3", MED	\$13.40
50009	ANTISEPTIC WIPES MEDIUM	\$11.30
50030	ANTISEPTIC WIPES SMALL	\$6.87
50239	HYDROGEN PEROXIDE 2 OZ	\$10.67
50429	ALCOHOL PREP PADS MEDIUM	\$10.42
50430	ALCOHOL SWABS SMALL	\$6.87
50539	ALCOHOL SPRAY PUMP 2/OZ	\$12.38
50620	PAWS ANTIMICROB TWL 100BX	\$17.13
50630	PAWS ANTIMICROBIAL TWLTTS 4/PACK	\$10.02
51030	HAND SANITIZER SMALL	\$8.50
61029	ANTISEPTIC PUMP 2 OZ	\$13.47
61109	ITCH RELIEF SPRY 2 OZ	\$14.41
62029	BURN CARE PUMP 2 OZ	\$13.63
63039	COLD SPRAY 4 OZ	\$16.59
64039	BLOOD CLOTTER SPRAY 3 OZ	\$35.91
70010	COTTONTIP APP 3" 100/VIAL	\$8.11
70473	RASPBERRY EMERGEN-C/30BOX	\$54.16
70619	GAUZE PADS 2"X2" SMALL	\$6.44
70819	GAUZE PADS 3"X3" SMALL	\$10.23
71019	GAUZE PADS 4"X4" SMALL	\$10.60
72220	ROLLER GAUZE, 2" NON-STER	\$7.00
72230	ROLLER GAUZE, 3" NON-STER	\$7.67
72240	ROLLER GAUZE 4" NON-STER	\$8.79
73029	NON-ADHERENT PAD 2"X3"SM	\$10.81
73829	BLOODSTOPPER COMPRESS	\$14.55
74415	EMERGEN-C TANGERINE/5 PK	\$9.78
75448	MEDI-RIP 2" BLUE	\$12.10
78397	SUNX SPF30 LOTION PCHS/50	\$77.57
79191	MUCINEX SMALL	\$15.94
79520	EMERGEN-C RASPBERRY/5 PK	\$9.78
80200	ELASTIC TAPE 1" X 5'/ROLL	\$10.12
80479	1/2" X 5 TAPE DISPENSER	\$7.24
80489	1" X 5 TAPE DISPENSER	\$10.56
82620	ELASTIC ACETYPE BANDAGE 2"	\$6.31
82630	ELASTIC ACETYPE BANDAGE 3"	\$7.71
91009	COLD PACK, SMALL, BULK	\$3.09
91019	COLD PACK, SMALL, 1/BOX	\$3.97

*Standard pricing listed.
Cintas will apply a 40% discount to all items listed.

92009	COLD PACK, LARGE, BULK	\$3.59
92019	COLD PACK, LARGE, 1/BOX	\$4.27
100019	TRIPLE ANTIBIOTIC OINT MD	\$10.19
100029	TRIPLE ANTIBIOTIC OINT LG.	\$43.11
100039	TRIPLE ANTIBIOTIC OINT SM	\$6.55
100419	HYDROCORTISONE CREAM MED	\$10.59
100439	HYDROCORTISONE CREAM SM	\$5.99
100619	HAND LOTION, MEDIUM	\$9.07
100639	HAND LOTION, SMALL	\$5.47
101219	FIRST AID CREAM, MED	\$9.93
101239	FIRST AID CREAM SMALL	\$5.95
102435	LIPAID SMALL	\$5.70
102640	BIOFREEZE MUSCLE RLF SM	\$7.90
102835	DENTAL RELIEF, SMALL	\$6.11
111180	ASPIRIN ORG ST 50CT	\$11.00
111190	ASPIRIN ORG ST 100 CT	\$20.07
111230	CHEWABLE ASPIRIN 81mg	\$7.94
111329	ACETAMINOPHEN SM	\$11.00
111389	ACETAMINOPHEN MED	\$15.89
111399	ACETAMINOPHEN LRG	\$20.87
111529	PAIN AWAY X-STRENGTH SM	\$9.17
111589	PAIN AWAY X-STRENGTH MED	\$12.94
111599	PAIN AWAY X-STRENGTH LRG	\$29.33
111730	CRAMP TABLET 80/box (18)	\$15.28
111830	BACK RELIEF MEDIUM	\$17.72
111929	IBUPROFEN TABS SMALL	\$11.00
111989	IBUPROFEN TABS MEDIUM	\$17.11
111999	IBUPROFEN TABS LRG	\$31.16
112029	COLD RELIEF MAX/STR SM	\$11.07
112039	COLD RELIEF MAX/STR MED	\$19.55
112049	COLD RELIEF MAX/STR LG	\$29.35
112229	DECONGEST NASAL/SINUS SM	\$7.93
112239	DECONGEST NASAL/SINUS MED	\$14.66
112249	DECONGEST NASAL/SINUS LG	\$25.82
112429	SINUS RELIEF DUAL ACTN SM	\$10.39
112439	SINUS RELIEF DUAL ACTN MD	\$17.72
112449	SINUS RELIEF DUAL ACTN LG	\$31.01
113529	CHERRY MNTHL COUGH DRP MD.	\$12.22
113539	CHERRY MNTHL COUGH DRP LG	\$20.16
113629	HONEYLMN MNTHL COUGH DR MD	\$12.22
113639	HONEYLMN MNTHL COUGH DR LG	\$15.22
113919	LIQUID COUGH SUPPRSSNT SM	\$12.83
115029	ANTACID FRUIT FLAVOR SM	\$9.17
115089	ANTACID FRUIT FLAVOR MED	\$14.66
115099	ANTACID FRUIT FLAVOR LRG	\$22.61
119250	ANTI-DIARRHEAL CAPLETS SM	\$14.05
119260	ALLERGY RELIEF TABLET MED	\$15.68
119279	COLD-EEZE LOZENGE SMALL	\$10.59
119289	COLD-EEZE LOZENGE MEDIUM	\$17.96
119310	PEPTUM TABS SMALL	\$14.66
121020	ADVIL MEDIUM	\$42.16
121210	ALEVE MEDIUM	\$34.01
121220	ALEVE SMALL	\$6.24
121410	XTR-STRENGTH TYLENOL, MED	\$48.09
121600	ALKA SELTZER MEDIUM	\$25.66
121630	NAPROXEN SODIUM SM FAD	\$7.55
122110	BAYER ASPIRIN SMALL	\$7.94
122249	GLUCOSE, SMALL	\$13.28
140560	BUG-X INSECT REPEL 25/BOX	\$31.55
150060	TWEEZER, DISP PLASTIC	\$3.00
150110	TWEEZERS, METAL IND/3PK	\$7.00
150620	SPLINTER-OUT DISP MED	\$6.55
150800	SCISSORS 4.5" LISTER BAND	\$7.48
150820	SCISSORS 5.5" LISTER BAND	\$8.76
150940	SCISSORS, KIT WIRE	\$4.19
151119	DISP THERMOMETER 4/BG	\$7.55
151629	FIRST AID GUIDE	\$11.97
160220	BURN JEL PACKET 25/BOX	\$27.65
163020	BURN RELIEF 4X4 DRESSING	\$12.83
163050	BURN RELIEF PACKET/ 6 PK	\$10.53
164010	COOL&SOOTHE 6/BOX	\$24.12
180029	EYE DRESSINGS/2 BX	\$4.09
180049	TOURNIQUET/2 BX	\$4.71

180069	TRIANGULAR BNDG UNITIZE/1BX	\$3.81
182019	STINGRELIEF WIPES 10/UNIT	\$6.70
238000	X3 CLEAN HAND SANITIZER 75 ML	\$5.56
250410	HAND SANITIZER W ALOE 2OZ	\$3.97
251430	SD HAND & SURFACE WIPES	\$22.14
561913	MUCINEX DM/40 BOX	\$83.57
562567	BLOODSTOPPER WRAP 2"	\$11.31
565759	EMERGEN-C TANGERINE/30 BX	\$33.80
565761	EMERGEN-C ORANGE/30 BX	\$34.52
572794	REFRESH TEARS/30 PACK	\$40.94
573772	DAYQUIL SMALL	\$9.78
573773	PEPCID AC SMALL	\$8.48
574143	SORE THROAT CHERRY/SMALL	\$8.48
579174	EMERGEN-C CRN PMGRNT/5PK	\$6.29
583114	DAYQUIL SVR COLD/FLU/50BX	\$51.32
586723	EMERGEN-C LMN LIME/5 PK	\$6.29
587819	PEPTO BISMOL 12CT	\$7.48
588026	EMERGEN-C ORANGE 5/PK	\$6.29
592242	TRAUMA PAD VACUUM SLD/4BX	\$12.46
592243	SPLINT 24"	\$13.34
595058	MEDICATED CRM 3.3OZ	\$5.83
600007	SOF TOURNIQUET GEN 4 BLK	\$68.33
602669	BIOFRZE CNTNOUS SPRAY 4OZ	\$14.96
606879	WHT 1"X10YD MICRPR TAPE	\$2.83
610446	BIOFREEZE SPRY 3OZ CLRLS	\$16.80
612038	CLARITIN ALLERGY TAB 25/PK	\$61.07
613771	Multi Unit Bleeding Control Kit	\$263.20
616676	GERMX 100CT WIPE DMPBN PD	\$18.44
1030300	WOUNDSEAL POUR PACK (2)	\$20.13
1030400	WOUNDSEAL PLUS APPLCTR (2)	\$20.45
8301156	MEDI-RIP 2"X5YDS BLUE 12/BX	\$6.08
8302714	PEPCID AC TABLTS 30 COUNT	\$36.78
8303456	NEW SKIN SPRAY 1 OZ	\$11.22
8304894	ADVIL LIQUID GEL 100 CT	\$33.20
8306525	MEDIRIP 3 X 5 YDS BLUE	\$6.32
8313752	GOODYS COOL ORANGE PWD PK	\$7.19
31273	GLV DIAMOND GRIP LTX PF 6ML EXM L	\$32.86
31353	GLV SEMPERFORCE NTRL PF EXAM BLK L	\$32.86
31354	GLV SEMPERFORCE NTRL PF EXAM BLK XL	\$32.86
51120	SD SAFETY WIPES, 100 CNT	\$6.27
55555	HARD SURFACE DISINFEC SVC	\$4.80
71152	GLV SD PRO NTRL BLU S	\$25.99
71153	GLV SD PRO NTRL BLU M	\$25.99
71154	GLV SD PRO NTRL BLU L	\$25.99
71155	GLV SD PRO NTRL BLU XL	\$25.99
71156	GLV SD PRO LTX/ S	\$17.62
71157	GLV SD PRO LTX M	\$17.62
71158	GLV SD PRO LTX L	\$17.62
71159	GLV SD PRO LTX XL	\$17.62
71161	GLV SD PRO VNYL M	\$15.04
71162	GLV SD PRO VNYL L	\$15.04
71163	GLV SD PRO VNYL XL	\$15.04
76579	GLV SD-TEK NYLON GRY/BLK FM NTRL S	\$24.37
76580	GLV SD-TEK NYLON GRY/BLK FM NTRL M	\$24.37
76581	GLV SD-TEK NYLON GRY/BLK FM NTRL L	\$24.37
76582	GLV SD-TEK NYLON GRY/BLK FM NTRL XL	\$24.37
94400	SD ALL-PURPOSE WIPER 100/BX	\$9.61
96800	HEAVY DUTY WIPERS	\$8.34
250100	BODY FLUID CLEANUP KT REF	\$27.01
250119	BODY FLUID CLEANUP KIT	\$27.01
250279	BIOHAZARD BIO-BAGS, 4/BOX	\$7.13
250300	SHARPS START UP ML BK SYS 1GAL	\$117.88
261400	BLANKET, DISP, SILVER	\$9.11
280000	LENS/SCREEN WIPES 36/BX	\$10.53
280020	LENS/SCREEN WIPES 100/BX	\$14.63
280030	LENS/SCREEN WIPES REFILL	\$9.02
281050	SD SIDE SHIELD CLEAR	\$4.67
290010	EARPLUG SD CMFRT FIT W/OCD 200/BX	\$21.97
290020	EARPLUG SD CMFRT FIT W/CD 100/BX	\$24.43
290030	EARPLUG SD CMFT + W/OCD 200/BX	\$21.97
290040	EARPLUG SD CMFT + W/CD 100/BX	\$21.97
290070	EARPLUG SD DURAPLUG W/CD 25/BX	\$25.18
291200	EARPLUG EAR CLSC W/OCD 200/BX	\$43.45

291330	EARPLUG EAR ULTRAFIT W/CD 100/BX	\$171.76
292000	EARPLUG HW MAX W/CD 100/BX	\$35.91
292100	EARPLUG HW MAXLITE W/CD 100/BX	\$32.11
292120	EARPLUG HW MAXLITE W/CD 200/BX	\$31.46
292250	LASER-TRAK W/CD 100 PR/BX	\$52.53
292710	EARPLUG HW FUSION W/CD 100/BX	\$177.80
293220	EARPLUG MLDX SPRKPLG STN 250/PR	\$35.51
293230	EARPLUG MLDX SPRKPLG STN 500/PR	\$70.35
300200	RESP DISP MOLDEX 2200 N95 20/BX	\$55.27
300220	RESP DISP MOLDEX 2300 N95 W/VLV 10/BX	\$42.57
304120	RESP DISP 3M 8210 N95 20/BX	\$23.98
304140	2091 P100 PARTIC.FILTER REPL.	\$11.47
304200	RESP DISP 3M 8511 N95 W/VLV 10/BX	\$28.46
305040	NUISANCE DUST MASK/50	\$7.62
305050	RESP DISP SD N95 20/BX	\$20.32
305060	RESP DISP SD N95 W/VLV 10/BX	\$23.69
306080	MSA OV/P100 P100 CART 1 PR	\$38.52
306120	OV/AG/P100/AM P100 1 PR	\$40.78
312630	GLV SEMPERGUARD NTRL PF IND BLUE L	\$32.86
312640	GLV SEMPERGUARD NTRL PF IND BLUE XL	\$32.86
312950	KLEVER CONCEPT KUTTER YLW	\$2.68
313130	GLV SEMPERGUARD LTX PWDR IND L	\$17.62
318200	BLUE FINGERCOTS LTX 144/BX	\$11.43
320330	HARD HAT SWEAT BAND BLU TERRY PK/20	\$3.46
340789	FIRST AID POSTER 22"X28"	\$18.14
564125	ANSER BLK FRAME CLR LENS	\$3.27
571113	QWIK STK 20OZ ASRT FLV/CS	\$105.54
571750	GLV SD PRO NTRL BLK S	\$32.86
571751	GLV SD PRO NTRL BLK M	\$32.86
571752	GLV SD PRO NTRL BLK L	\$32.86
571753	GLV SD PRO NTRL BLK XL	\$32.86
571754	GLV SD PRO NTRL BLK 2X	\$32.86
577594	GLV VNYL PF 6ML IND MTL DTECT XL	\$28.43
580282	GLV CYPRESS PLUS LTX PF 5ML EXAM M	\$117.69
581810	GLV LEATHER PALM SPLIT COW VND PK L	\$23.13
583614	GLV MAXIFLEX CUT S CUT-A2 HPPE GRN	\$114.15
583615	GLV MAXIFLEX CUT M CUT-A2 HPPE GRN	\$114.15
583616	GLV MAXIFLEX CUT L CUT-A2 HPPE GRN	\$114.15
583617	GLV MAXIFLEX CUT XL CUT-A2 HPPE GRN	\$114.15
592287	SD FOG BLASTER CLEAR	\$6.54
592288	SD FOG BLASTER GREY	\$6.61
603546	ZENON CLR/CLR 1CLR LO	\$2.45
604902	GLV SD PRO NTRL ORNG M	\$43.24
604903	GLV SD PRO NTRL ORNG L	\$43.24
604904	GLV SD PRO NTRL ORNG XL	\$43.24
605723	GLV SD PRO NTRL ORNG 2X	\$43.24
610254	HARD SURFACE CLEAN	\$8.02
617989	Lysol Wipes 80 CT	\$8.46
1412821	SD APACHE BLK/CLR LOGO	\$3.96
1412831	SD APACHE BLK/GREY LOGO	\$4.16
1412841	SD APACHE BLK/I/O MR LOGO	\$4.14
1413181	SD APACHE BLK/AF CLR LOGO	\$4.81
1415070	LAW OTG STL FRM AF CLR LN	\$5.50
1670230	GLV LEATHER PLM SPLT CW ECON L SFTY CUFF	\$27.15
1670430	GLV DOUBLE LTHR PLM SPLT COW B/C L	\$37.15
1670440	GLV DOUBLE LTHR PLM SPLT CW ECON XL	\$37.15
1670720	GLV DRIVER GRAIN COW REG GD STRT M	\$58.67
1670730	GLV DRIVER GRAIN COW REG GD STRT L	\$58.67
1670740	GLV DRIVER GRAIN COW REG GD STRT XL	\$58.67
1670830	BLACK PVC 12" GLOVES	\$35.19
1671130	WHITE CANVAS LARGE	\$11.66
1671230	COTTON STRING KNIT L	\$3.80
1677230	CTN LTWT ECNMY UNHMD/MENS	\$4.62
1685830	STRING KNT DOUUBLE DOT LG	\$11.19
1696810	CTTN LISLE ECNMY GLV/LADY	\$3.64
1708230	BRWN CTTN REG KNTWRST/MNS	\$11.15
1718530	GLV PIP CTN/POLY WHT/BLU LATEX L	\$13.64
1719260	GLV SUREGRIP GRY/BLU LATEX M	\$23.95
1719270	GLV SUREGRIP GRY/BLU LATEX L	\$24.65
1719280	GLV SUREGRIP GRY/BLU LATEX XL	\$24.65
1719530	GLV POWERGRAB THERMO ORG/BLK LTX L	\$82.12
1719630	GLV G-TEK GP CTN/POLY GRY/BLU LTX L	\$19.04
1722230	CTTN 7 GAUGE MD WT GRY/L	\$8.54

1722820	GLV G-TEK GP NYLON GRY/GRY PU M	\$12.18
1722830	GLV G-TEK GP NYLON GRY/GRY PU L	\$12.18
1722840	GLV G-TEK GP NYLON GRY/GRY PU XL	\$12.18
1726630	KVLR 2 PLY CUT 3 SLV 18"	\$4.99
1732420	GLV MAXIFOAM PREM WHT/GRY FM NTRL M	\$48.16
1732430	GLV MAXIFOAM PREM WHT/GRY FM NTRL L	\$48.16
1732440	GLV MAXIFOAM PRM WHT/GRY FM NTRL XL	\$48.16
1732510	GLV MAXIFLEX ULT GRY/BLK FM NTRL S	\$57.15
1732520	GLV MAXIFLEX ULT GRY/BLK FM NTRL M	\$57.15
1732530	GLV MAXIFLEX ULT GRY/BLK FM NTRL L	\$57.15
1732540	GLV MAXIFLEX ULT GRY/BLK FM NTRL XL	\$57.15
1732550	GLV MAXIFLEX ULT GRY/BLK FM NTRL 2X	\$57.15
1733550	KEVLAR SLEEVE W/THUMB	\$4.53
1733580	GLV ULTRATECH L CUT-A3 DYNMA S/P	\$128.76
1733800	9318D10T DYNMA SLV 18 10T	\$13.88
1745130	GLV GREAT WHITE L CUT-A3 DYNMA WHT	\$135.59
1749230	GLV G-TEK GP NYLON BLK/BLK PU L	\$12.47
1749240	GLV G-TEK GP NYLON BLK/BLK PU XL	\$12.47
1749830	GLV MAXIFLEX END GRY/BLK FM NTRL L	\$60.69
1749840	GLV MAXIFLEX END GRY/BLK FM NTRL XL	\$60.69
1787340	GLV AMBI-DEX NTRL PF 8ML IND BLU XL	\$47.29
8301775	GLV TOUCHNTUFF NTRL PF 5ML IND L	\$35.88
8304311	GLV RAVEN NTRL PF 6ML EXAM BLK L	\$36.43
8306071	GLV NITRISHIELD NTRL PF 8ML IND XL	\$43.24
8306166	GLV G-TEK GP NYLON BLU/BLK NTRL L	\$26.17
8306238	GLV SAFEGRIP LTX PF 14MIL EXAM BLUE L	\$20.62
8306239	GLV SAFEGRIP LTX PF 14MIL EXAM BLU XL	\$23.50
8306679	GLV DIAMOND GRIP LTX PF 6ML EXAM L	\$17.62
8306680	GLV DIAMOND GRIP LTX PF 6ML EXAM XL	\$17.62
8307735	ECNMY KEVLAR W/THUMB HOLE	\$4.86
8308166	GERMICIDAL WIPE	\$4.51
8309273	MSA815369 LOW PRFILE CART	\$15.28
8314455	DRK BL RTCH SUSP HH LOGO	\$20.18
8315617	GLV RAVEN NTRL PF 6ML EXAM BLK XL	\$36.43
609153L	GLV SD CUT2-NEW L HPPE S/P PU-CTD	\$36.56
609153M	GLV SD CUT2-NEW M HPPE S/P PU-CTD	\$36.56
609153XL1	GLV SD CUT2-NEW XL HPPE S/P PU-CTD	\$36.56
CR101640	FACE SHIELD CLEAR 10"X15.5" PETG	\$3.38
CRSD110	SD APACHE BLK/CLR	\$2.18
CRSD112	SD APACHE BLK/GREY	\$2.72
1660040	EMRGNCY SHWER STATW/ BOWL	\$506.81
8303757	8X16.5 CLR FACESHIELD	\$5.77
6609wht	HARD HAT V-GARD CAP VNTD RTCHT WHT	\$18.84
8301071	14" CRUSADER FLX GLV/SZ10	\$161.88
304200	RESP DISP 3M 8511 N95 W/VLV 10/BX	\$3.40
565482	CL2 FR MDCRYLC YLW VST/L	\$80.94
8313854	303-0500 ORG CL3 VEST/L	\$15.22
563782	Chain Saw Chaps	\$88.83
03-737	Delineator Post 49	\$23.91
606060	24" STOP/SLOW 81" 2 PIECE	\$98.83
6900080	ORG TRFC CNE 28" W/BLK BS	\$12.71
6900060	3004160 O/R DYGLW CO 36DW	\$19.87
13129	CINTAS 3 SHELF FIRST AID CABINET	\$229.72
13339	CINTAS 3 SHELF FOOD SVC CABINET	\$229.72
14129	CINTAS 4 SHELF FIRST AID CABINET	\$249.72
14129	CINTAS 4 SHELF FIRST AID CABINET	\$249.72
14339	CINTAS 4 SHELF FOOD SVC CABINET	\$249.72
20429	TRUCK KIT ANSI A METAL FULL	\$83.58
20529	TRUCK KIT ANSI A PLASTIC FULL	\$70.53
20629	SINGLE UNIT BLEEDING CONTROL KIT	\$93.06
20929	36 UNIT KIT METAL FULL	\$132.62
21629	TRAUMA BAG, SMALL FULL	\$94.00
22129	TRAUMA BAG, LARGE FULL	\$178.60
82020	CO-WRAP 2"	\$5.22
82410	READY-RIP 1"	\$4.26
82420	READY-RIP 2"	\$5.43
82430	READY-RIP 3"	\$9.27
82440	READY-RIP 4"	\$7.47
130100	LUBRICANT EYE DROPS	\$7.90
130209	INDUST EYE RELIEF 1/2 OZ	\$8.16
8302484	BC POWDERS, 2/BAG	\$1.47
13107	ANTIMICROBIAL ADDITIVE	\$54.94
13354	SD AQUAPRESERV ADDITIVE	\$54.94

132220	UNIVERSAL CART	\$630.11
132400	PUREFLOW 1000 W/O CARTS	\$388.35
132420	PUREFLOW CARTRIDGE (2)	\$154.50
1650040	GATORADE VARIETY 21 OZ	\$187.69
1901750	SQWINCHER FRZR P AST FLVR	\$54.41
8301161	NEMESIS SAFETY GLASS BLACK FRM CLR LENS	\$5.83
8301162	NEMESIS BLK FRM SMK LENS	\$6.50
8301481	2097 P100 PART FILTER/PAIR	\$11.84
CRCL110	CHECKLITE COATED CLR	\$2.02
CRSD110	SD APACHE BLK/CLR	\$2.68
CRSD110AF	SD APACHE BLK/AF CLEAR	\$2.26
CRSD112	SD APACHE BLK/GREY	\$3.37
CRSD119	SD APACHE BLK/I/O MIRROR	\$3.35
CRSD310	SD VIZICOR BLK/CLEAR	\$3.81
CRSDH15	SD APACHE READER 1.5	\$8.32
CRSDH20	SD APACHE READER 2.0	\$8.35
CRSDH25	SD APACHE READER 2.5	\$7.69
PYS3510SJ	PYRAMEX OTS BLACK/CLEAR	\$6.87
132980	EYE STATION 32 OZ, DOUBLE / EA	\$72.10
13040	EYE WASH, 1 OZ BOTTLE / EA	\$11.33
130429	EYE BUFFERED SOL 4OZ / EA	\$13.78
130479	EYEWASH, 1/2OZ MEDIUM / BX	\$24.64
131600	EYE CUPS SMALL 6 Vial/EA / EA	\$9.79
150420	EYE MAGNET & LOOP W/CASE / EA	\$45.86
181419	1/2OZ EYEWASH 2CT, UNIT / BX	\$10.17
600	EYE WASH STATION SERVICE / EA	\$127.00
601	PUREFLOW EYE WASH SERVICE / EA	\$54.71
610	EYEWASH STA CLEANED/INSP / EA	\$11.52
999	MTHLY PLMBD EYEWASH INSP / EA	\$34.73
19020	HI-VIS EYE WASH STA EMPTY / EA	\$41.54
130840	EYE FLUSH 16 OZ / EA	\$20.65
132120	SD EYEWASH INSPECTION TAG / EA	\$12.32
132920	EYE SALINE REFILL 16 OZ / EA	\$20.63
132990	HONEYWELL EYE SALINE 32OZ / EA	\$27.63
133020	EYESALINE ADDITIVE / EA	\$100.87
133450	HAWS 7501 PORT EYESTATION / EA	\$410.63
561462	EYEWASH FLUSH PLMBD / EA	\$11.00
566974	EYEWASH ADDITIVE / EA	\$91.20
584940	EYEWASH ADDITIVE / EA	\$86.86
608304	CINTAS BLUE TAMPER SEAL/EA / EA	\$6.71
8300608	EYEWASH STATION STAND / EA	\$249.71
PZV1EW03A	6X9 EYE WASH V SIGN / EA	\$20.22
13354	SD AQUAPRESERV ADDITIVE / EA	\$81.83
55556	DISINFECTANT WIPE / EA	\$9.86
132400	PUREFLOW 1000 W/O CARTS / EA	\$613.69
132420	PUREFLOW CARTRIDGE (2) / PAA	\$230.10

Category	Items Covered not an all inclusive list	Minimum Discount (percentage)
Eye Wash Stations and Safety Showers	eye wash bottles, portable, plumbed in	40%
Face and Head Protection	hard hats, helmets, face shields, and visors	40%
First Aid	kits and refurbishment supplies	40%
Hearing Protection	ear plugs and ear muffs	40%
Protective Gloves	leather, chemical resistant, coated, general purpose, disposable, insulated, grip, special protective, cut resistant, electrical.	40%
Respiratory Protection Equipment	respirators, masks, gas masks, respirator filters, and protective films	40%
Safety Eyewear	safety glasses, impact-resistant goggles, welding goggles, ballistic glasses, and waterproof eyewear, prescription safety glasses	40%
Safety Vests and Harnesses	high visibility, quick release, d-ring, fire resistant	40%
Specialty Safety Apparel	not covered in one of the above categories.	40%